



# FROM \$476,900



**2,256**

Sq.Ft.



**3**

Bedrooms



**2.5**

Bathrooms



**1.0**

Story



**2**

Garage

The Cisco GR, part of Tilson’s Grand Ranch collection of plans, offers a thoughtful single-story design that brings comfort, function, and Texas acreage living together in a warm, inviting way. At the center of the home, the open-concept family room, kitchen, and dining area create an easy flow for everyday living and family gatherings, with a raised ceiling in the family room and rear covered porch adding a more open, elevated feel. The kitchen features a large eating bar and walk-in pantry, giving you practical space for hosting, meal prep, and storage. Privately set apart, the master suite includes dual vanities, an oversized ceramic tile shower with a seat, and large walk-in closets for everyday comfort and convenience. Two secondary bedrooms share a nearby bath, while the study near the foyer offers flexible space for working from home, hobbies, or quiet retreat. A utility room with a bench, covered front and rear porches, and an attached two-car garage add the useful details that help make the Cisco GR a lasting home for the way your family lives.

Like all homes in our Grand Ranch Collection, the starting price includes our standard site preparation.

**CONTACT US** None

**WWW.TILSONHOMES.COM**





Elevation D | The Cisco GR



Elevation C | The Cisco GR

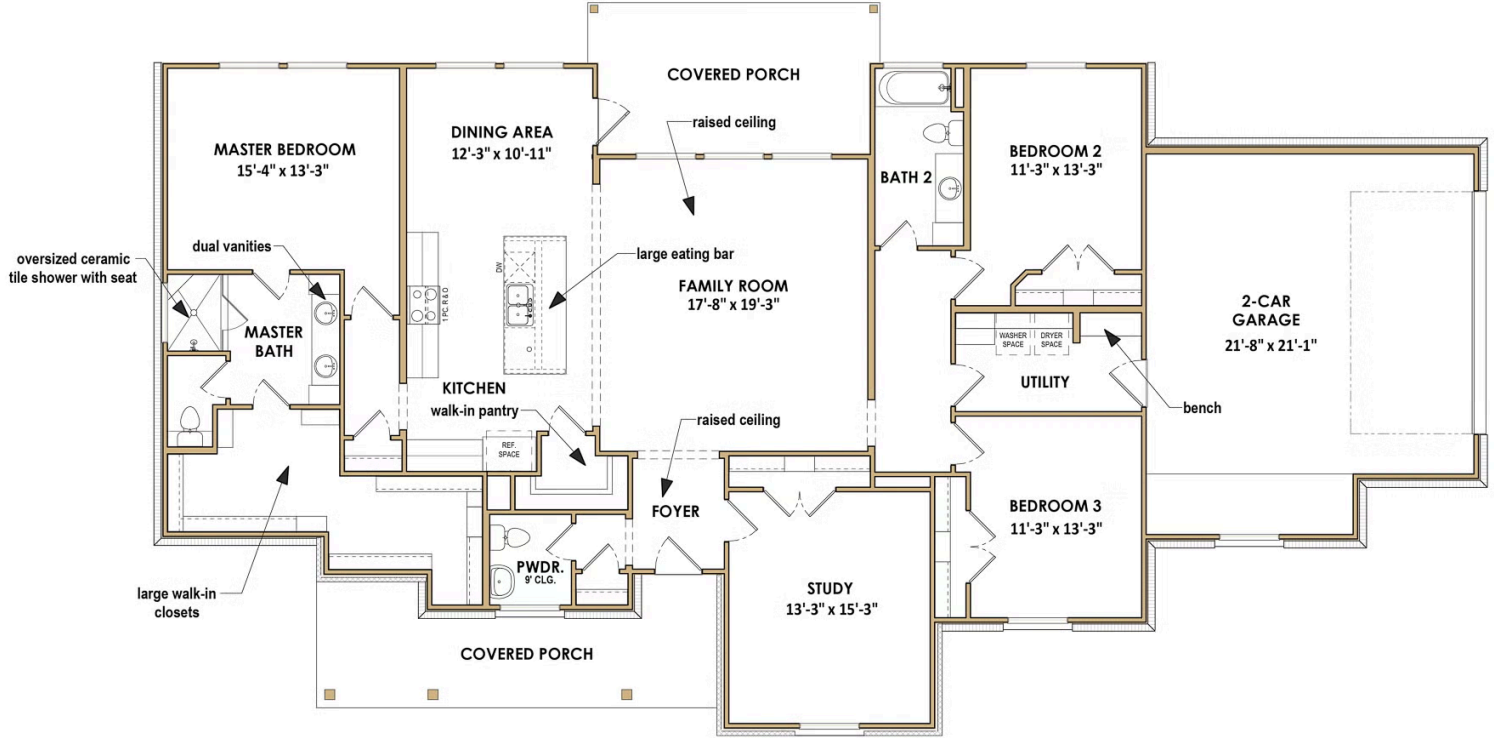
**CONTACT US** None

**WWW.TILSONHOMES.COM**



*Tilson continuously improves home designs and reserves the right to modify home features and specifications without notice or obligation. Square footage is approximate and includes overall dimensions. Renderings are drawn to be substantially correct. Tilson standard features may vary by home design and/or location. Contact a Tilson Sales Associate for details.  
Current information as June 1, 2026, 3:33 p.m.*

### Floor Plan | The Cisco GR - Elevation D



CONTACT US None

WWW.TILSONHOMES.COM

