



FROM \$474,100



2,297

Sq.Ft.



3

Bedrooms



2.5

Bathrooms



1.0

Story



2

Garage

Part of Tilson's Grand Ranch collection, the Canyon GR is a thoughtfully designed home offering both comfort and practicality for families. The open-concept family room, kitchen, and dining area create a welcoming central space, enhanced by a raised ceiling in the family room for an added touch of elegance. Perfect for everyday living and entertaining, the kitchen includes a large eating bar and a walk-in pantry.

The private master suite features dual vanities, a spacious ceramic tile shower with a built-in seat, and a generous walk-in closet. Two additional bedrooms share a full bathroom, while a versatile study is conveniently located near the foyer. Practical features include a drop zone with a bench, a dedicated utility room, covered front and rear porches, and an attached two-car garage, making the home functional and family-friendly.

As with all homes in the Grand Ranch Collection, the starting price includes essential site preparation services, ensuring a clear and straightforward planning process with no surprises. [View the full list of](#)

CONTACT US None

WWW.TILSONHOMES.COM



CANYON

Montgomery County - Republic Grand Ranch, TX

TILSON
CUSTOM HOME BUILDERS



Elevation D | The Canyon GR



Elevation C | The Canyon GR

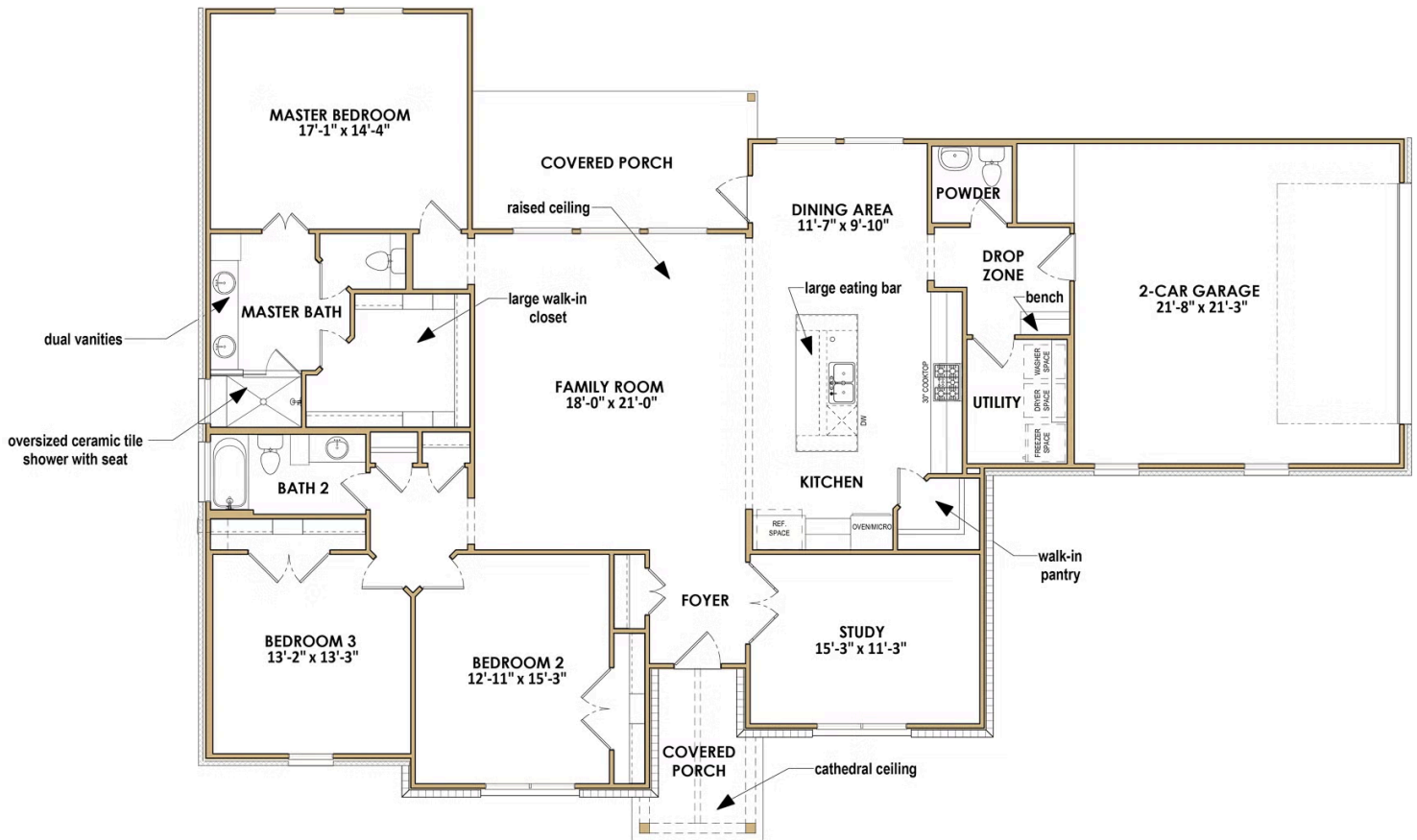
CONTACT US None

WWW.TILSONHOMES.COM



*Tilson continuously improves home designs and reserves the right to modify home features and specifications without notice or obligation. Square footage is approximate and includes overall dimensions. Renderings are drawn to be substantially correct. Tilson standard features may vary by home design and/or location. Contact a Tilson Sales Associate for details.
Current information as June 1, 2026, 3:11 p.m.*

Floor Plan | Canyon GR - Elevation D



CONTACT US None

WWW.TILSONHOMES.COM

