



## FROM \$493,100



**2,263**

Sq.Ft.



**3**

Bedrooms



**2.5**

Bathrooms



**1.0**

Story



**2**

Garage

The Brazoria GR, part of Tilson's Grand Ranch collection, is designed for acreage living with an open-concept family room, kitchen, and dining area featuring raised ceilings. The kitchen includes a large eating bar and walk-in pantry. The private master suite at the rear offers dual vanities, a walk-in tile shower, and two walk-in closets. Two additional bedrooms share a bathroom on the opposite side of the home. A versatile study is located near the entry, and the home features covered front and back porches, plus an attached two-car garage connected via the utility room.

As with all homes in the Grand Ranch Collection, the starting price includes essential site preparation services, ensuring a transparent and straightforward planning process. These services eliminate surprises and provide clarity from the beginning. [View the full list of included property services.](#)

**CONTACT US** None

**WWW.TILSONHOMES.COM**



*Tilson continuously improves home designs and reserves the right to modify home features and specifications without notice or obligation. Square footage is approximate and includes overall dimensions. Renderings are drawn to be substantially correct. Tilson standard features may vary by home design and/or location. Contact a Tilson Sales Associate for details. Current information as June 1, 2026, 3:34 p.m.*

# BRAZORIA

Montgomery County - Republic Grand Ranch, TX

**TILSON**  
CUSTOM HOME BUILDERS



Elevation D | Brazoria GR



Elevation C | Brazoria GR

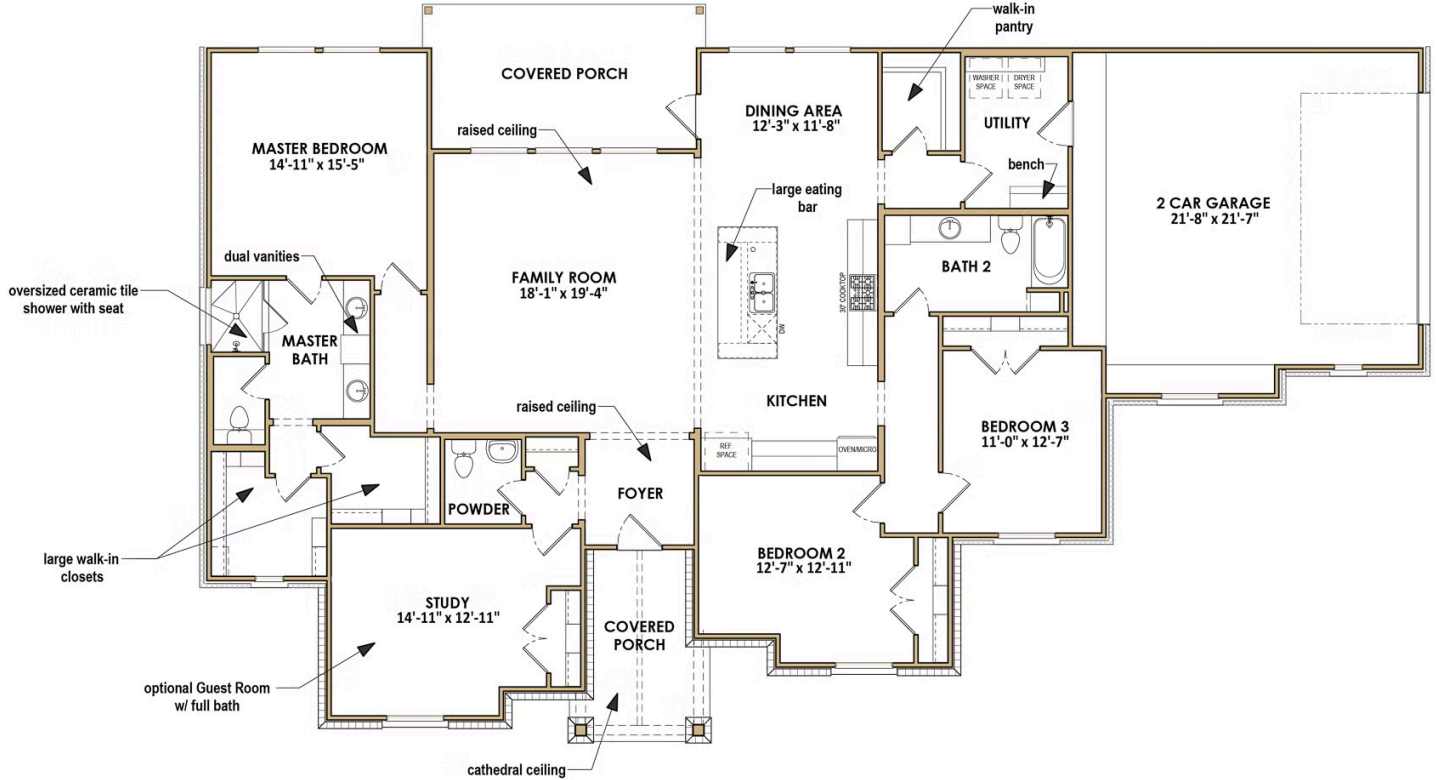
**CONTACT US** None

**WWW.TILSONHOMES.COM**



*Tilson continuously improves home designs and reserves the right to modify home features and specifications without notice or obligation. Square footage is approximate and includes overall dimensions. Renderings are drawn to be substantially correct. Tilson standard features may vary by home design and/or location. Contact a Tilson Sales Associate for details.  
Current information as June 1, 2026, 3:34 p.m.*

## Floor Plan | Brazoria GR -Elevation D



CONTACT US None

[WWW.TILSONHOMES.COM](http://WWW.TILSONHOMES.COM)



Tilson continuously improves home designs and reserves the right to modify home features and specifications without notice or obligation. Square footage is approximate and includes overall dimensions. Renderings are drawn to be substantially correct. Tilson standard features may vary by home design and/or location. Contact a Tilson Sales Associate for details. Current information as June 1, 2026, 3:34 p.m.