



FROM \$350,800



2,009

Sq.Ft.



3

Bedrooms



2.0

Bathrooms



1.0

Story

Families who love to host company and family holidays will love the layout of the Frio. The foyer at the front entrance flows into a large gathering area, with an open family room, dining area, and kitchen.

The kitchen features a modest pantry and an island overlooking the space. A wall of windows and exterior door lead to a covered porch at the rear. Extending to the left of the foyer is a hub with two bedrooms with walk-in closets, a full bathroom, utility room, and desk space. The master suite is accessed by the dining area, and features its own large walk-in closet and a bathroom with a soaking tub and separate vanities.

CONTACT US None

WWW.TILSONHOMES.COM



Tilson continuously improves home designs and reserves the right to modify home features and specifications without notice or obligation. Square footage is approximate and includes overall dimensions. Renderings are drawn to be substantially correct. Tilson standard features may vary by home design and/or location. Contact a Tilson Sales Associate for details. Current information as April 7, 2025, 10:52 a.m.

FRIO

Fort Bend County, TX

TILSON
CUSTOM HOME BUILDERS



Elevation C - The Frio

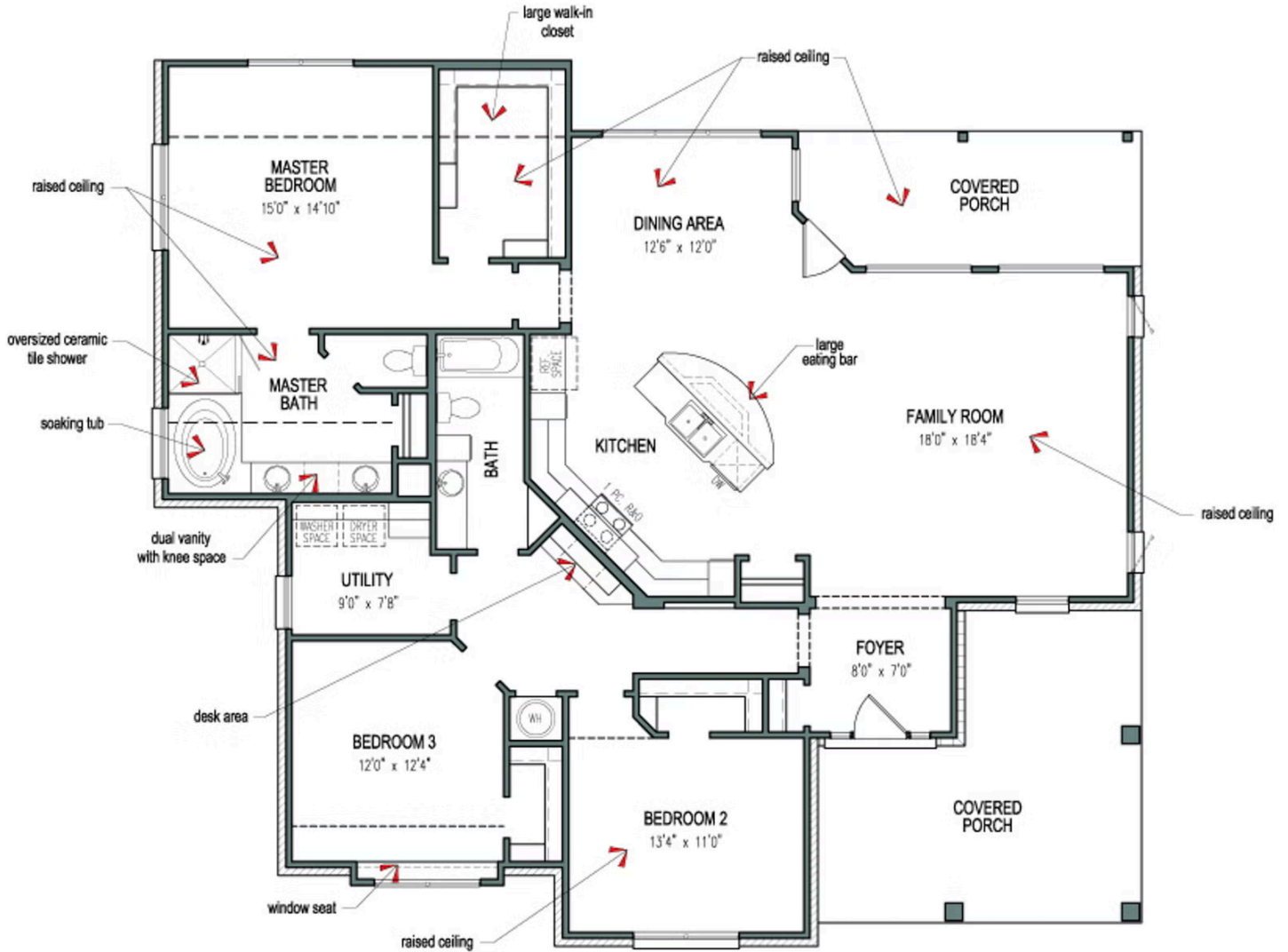
CONTACT US None

WWW.TILSONHOMES.COM



*Tilson continuously improves home designs and reserves the right to modify home features and specifications without notice or obligation. Square footage is approximate and includes overall dimensions. Renderings are drawn to be substantially correct. Tilson standard features may vary by home design and/or location. Contact a Tilson Sales Associate for details.
Current information as April 7, 2025, 10:52 a.m.*

Floorplan - The Frio



CONTACT US None

WWW.TILSONHOMES.COM

