



FROM \$339,900



1,832

Sq.Ft.



3

Bedrooms



2.0

Bathrooms



1.0

Story



0

Garage

The Guadalupe is centered on a large family room that opens into a long covered porch at the rear of the home. The kitchen and dining area are situated at the front of the layout, with an open counter and eating bar overlooking the family room. An open foyer at the front entrance adjoins a sizable flex room that can be used for entertaining or converted to another bedroom. The master suite on the left side of the home features a soaking tub, walk-in shower, and large walk-in closet. On the right side, two bedrooms, a full bathroom, and a utility room complete the design.

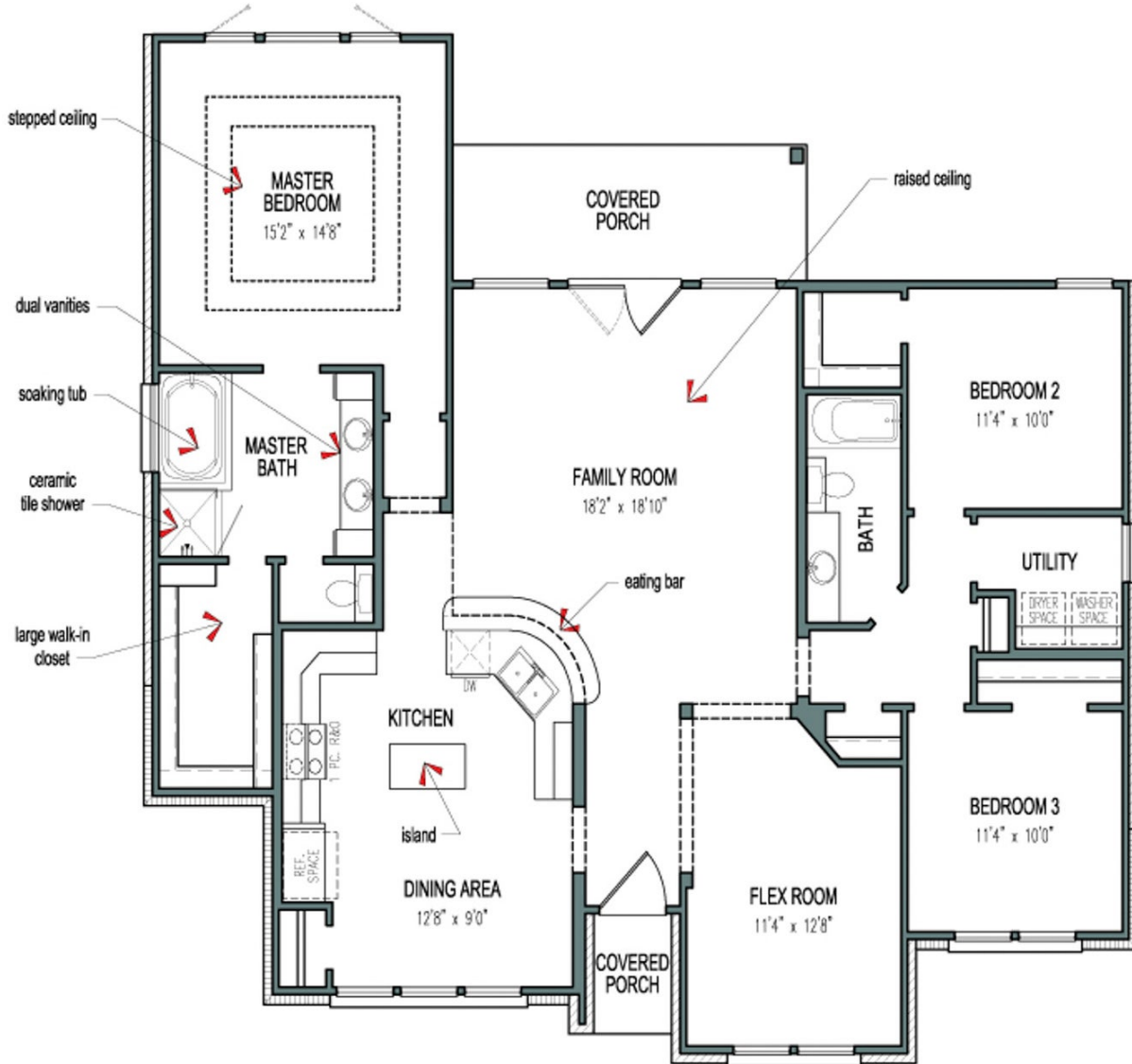
CONTACT US

WWW.TILSONHOMES.COM



Tilson continuously improves home designs and reserves the right to modify home features and specifications without notice or obligation. Square footage is approximate and includes overall dimensions. Renderings are drawn to be substantially correct. Tilson standard features may vary by home design and/or location. Contact a Tilson Sales Associate for details. Current information as June 12, 2024, 4:40 p.m.

Floorplan - The Guadalupe



CONTACT US

WWW.TILSONHOMES.COM

