



## FROM \$332,900



**1,862**

Sq.Ft.



**3**

Bedrooms



**2.0**

Bathrooms



**1.0**

Story



**0**

Garage

The Crockett features a large gathering area with an open design. The kitchen overlooks the family room and dining room with a large, curved eating bar, keeping the space open and bright. Adjacent to the kitchen is a secluded utility room with counter space for sewing or folding laundry. Floor-to-ceiling windows light up the living room and dining room, giving a view of the spacious covered porch at the rear of the home. Two regular bedrooms with walk-in closets, a full bath, and a master suite branch off from the family room, keeping living quarters connected but private. The master suite includes a larger walk-in closet attached to the spacious bathroom, which consists of two separated vanities, an enclosed toilet, and an over-sized walk-in shower with seating.

**CONTACT US**

**WWW.TILSONHOMES.COM**



*Tilson continuously improves home designs and reserves the right to modify home features and specifications without notice or obligation. Square footage is approximate and includes overall dimensions. Renderings are drawn to be substantially correct. Tilson standard features may vary by home design and/or location. Contact a Tilson Sales Associate for details.  
Current information as July 7, 2023, 2:41 p.m.*



Elevation E - The Crockett



Elevation D - The Crockett



Elevation C - The Crockett



Elevation B - The Crockett

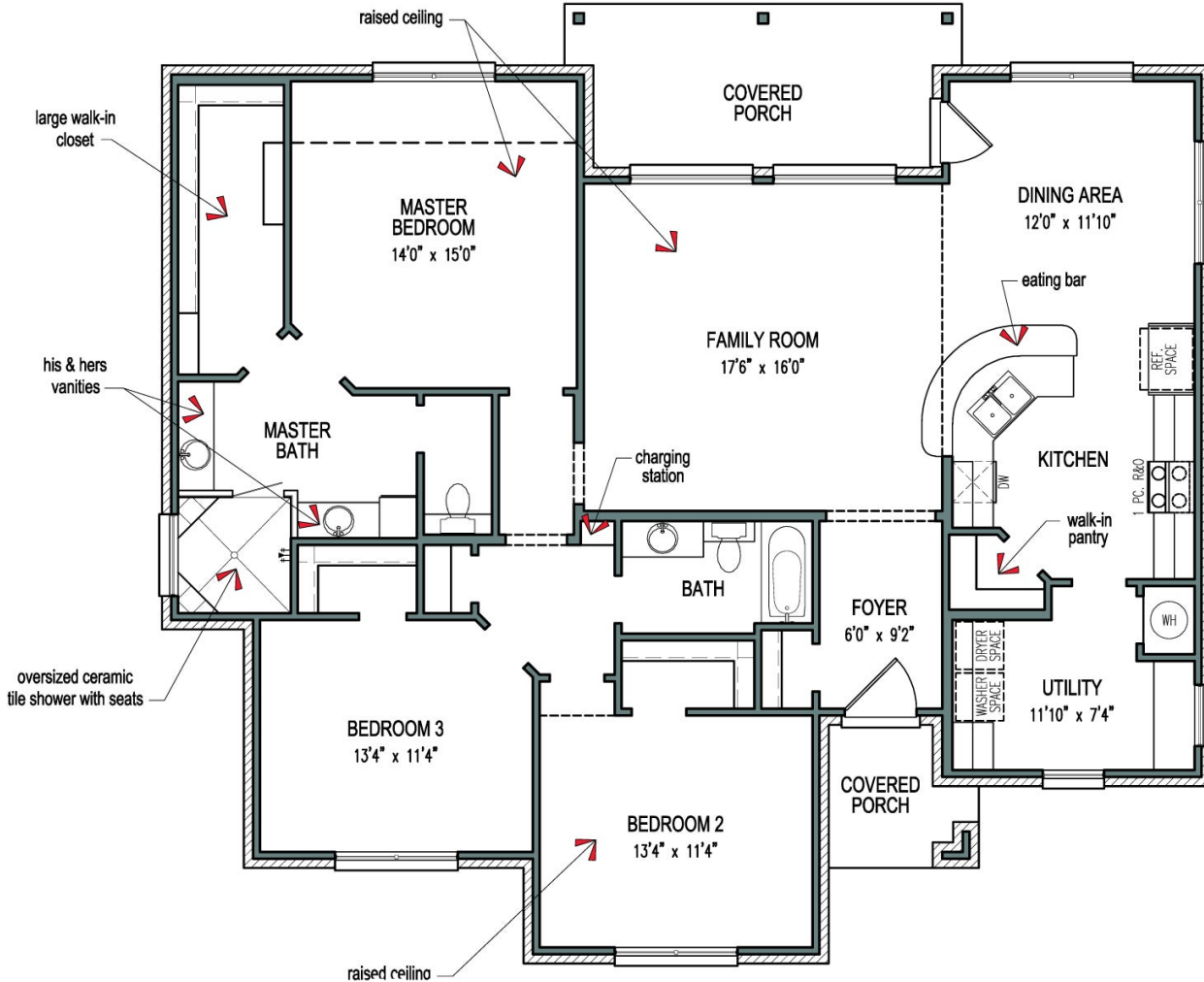
CONTACT US

[WWW.TILSONHOMES.COM](http://WWW.TILSONHOMES.COM)



*Tilson continuously improves home designs and reserves the right to modify home features and specifications without notice or obligation. Square footage is approximate and includes overall dimensions. Renderings are drawn to be substantially correct. Tilson standard features may vary by home design and/or location. Contact a Tilson Sales Associate for details. Current information as July 7, 2023, 2:41 p.m.*

## Floorplan - The Crockett



CONTACT US

WWW.TILSONHOMES.COM

*Tilson continuously improves home designs and reserves the right to modify home features and specifications without notice or obligation. Square footage is approximate and includes overall dimensions. Renderings are drawn to be substantially correct. Tilson standard features may vary by home design and/or location. Contact a Tilson Sales Associate for details. Current information as July 7, 2023, 2:41 p.m.*

