



FROM \$349,300



2,098

Sq.Ft.



3

Bedrooms



2.5

Bathrooms



2.0

Story

The Goliad is a two-story home with a split floor plan downstairs and a private living space upstairs. Upon entering through a modest covered porch, a hallway divides the first floor. On the left side near the entrance, a powder room and utility room branch off from a small hub. Toward the rear, you'll find the master suite with a spacious walk-in closet. On the right side, the kitchen, attached dining area, and adjacent family room create an open gathering space. At the rear of the home, stairs located opposite an exterior door lead to a large open loft, two bedrooms with walk-in closets, and a full bathroom.

CONTACT US None

WWW.TILSONHOMES.COM



*Tilson continuously improves home designs and reserves the right to modify home features and specifications without notice or obligation. Square footage is approximate and includes overall dimensions. Renderings are drawn to be substantially correct. Tilson standard features may vary by home design and/or location. Contact a Tilson Sales Associate for details.
Current information as April 7, 2025, 11:36 a.m.*



Elevation B - The Goliad



Elevation C - The Goliad



Elevation D - The Goliad



Elevation A - The Goliad

CONTACT US None

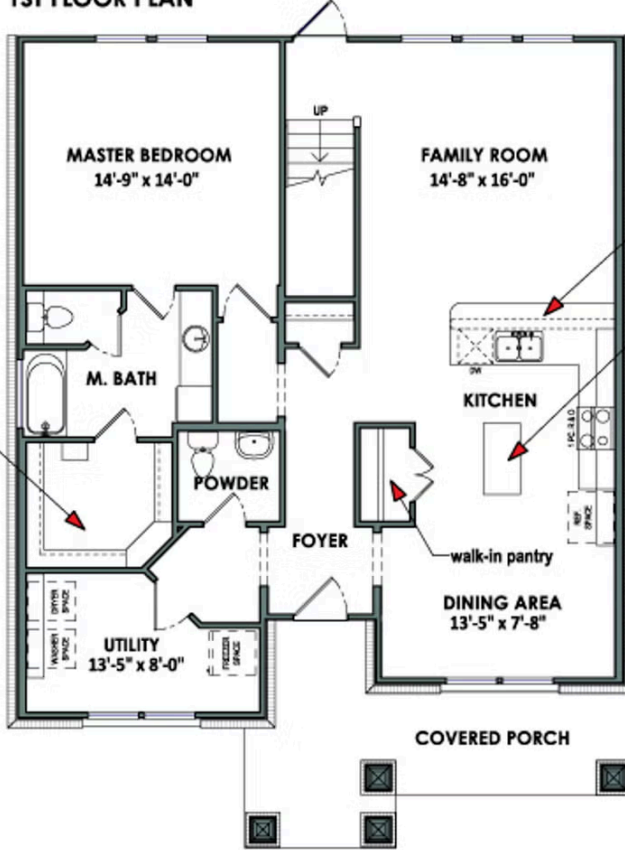
WWW.TILSONHOMES.COM



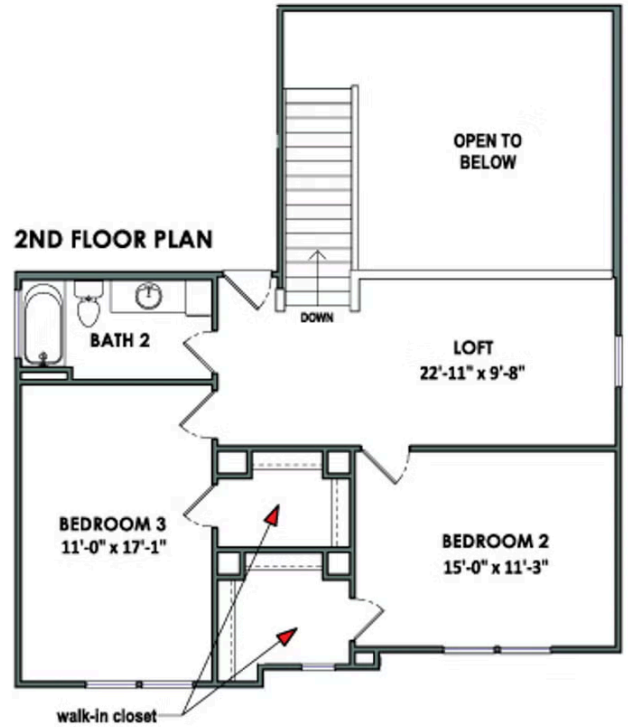
Tilson continuously improves home designs and reserves the right to modify home features and specifications without notice or obligation. Square footage is approximate and includes overall dimensions. Renderings are drawn to be substantially correct. Tilson standard features may vary by home design and/or location. Contact a Tilson Sales Associate for details. Current information as April 7, 2025, 11:36 a.m.

Floorplan - The Goliad

1ST FLOOR PLAN



2ND FLOOR PLAN



CONTACT US None

WWW.TILSONHOMES.COM

