



FROM \$344,200



2,215

Sq.Ft.



3

Bedrooms



2.5

Bathrooms



2.0

Story



0

Garage

The Goliad is a two-story home with a split floor plan downstairs and a private living space upstairs. Entering from a modest covered porch, a hallway divides the first floor. On the left side near the entrance, a powder room and utility room branch off from a small hub. Toward the rear is the master suite with a spacious walk-in closet. On the right side, the square kitchen, attached breakfast room, and adjacent family room create a wide-open gathering space. Stairs at the rear of the home sit opposite an exterior door, leading up to a large open loft, two bedrooms with walk-in closets, and a full bathroom.

CONTACT US

WWW.TILSONHOMES.COM



Tilson continuously improves home designs and reserves the right to modify home features and specifications without notice or obligation. Square footage is approximate and includes overall dimensions. Renderings are drawn to be substantially correct. Tilson standard features may vary by home design and/or location. Contact a Tilson Sales Associate for details.

Current information as June 12, 2024, 4:40 p.m.



Elevation B - The Goliad



Elevation C - The Goliad



Elevation D - The Goliad



Elevation A - The Goliad

CONTACT US

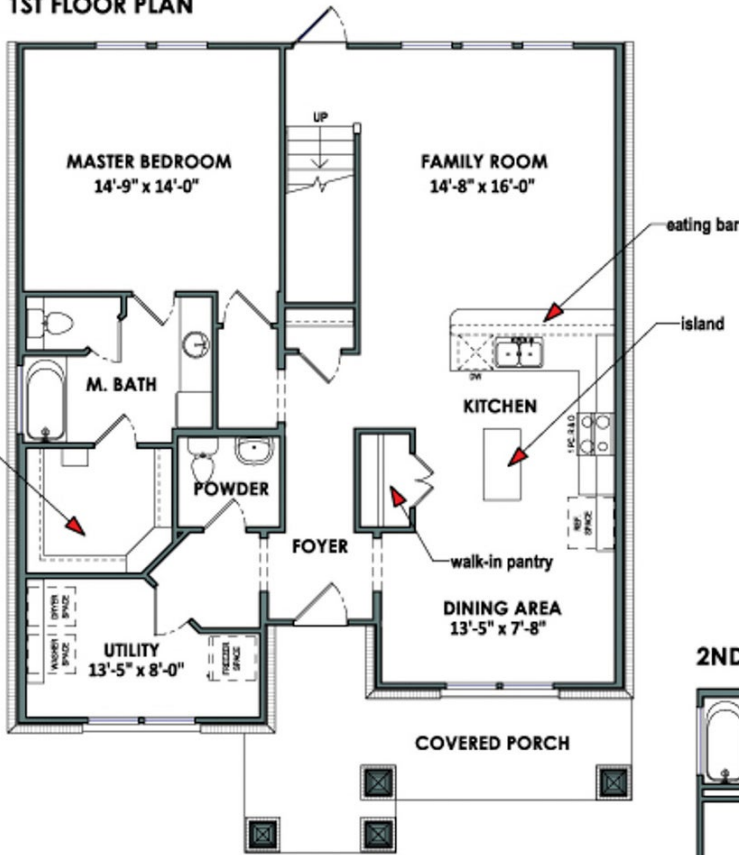
WWW.TILSONHOMES.COM



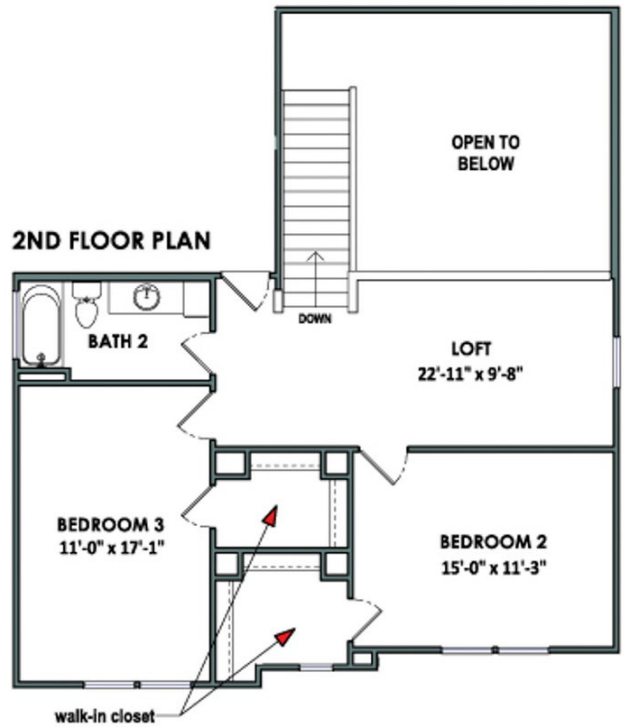
Tilson continuously improves home designs and reserves the right to modify home features and specifications without notice or obligation. Square footage is approximate and includes overall dimensions. Renderings are drawn to be substantially correct. Tilson standard features may vary by home design and/or location. Contact a Tilson Sales Associate for details. Current information as June 12, 2024, 4:40 p.m.

Floorplan - The Goliad

1ST FLOOR PLAN



2ND FLOOR PLAN



CONTACT US

WWW.TILSONHOMES.COM

