



FROM \$610,700



2,919

Sq.Ft.



4

Bedrooms



3.0

Bathrooms



1.0

Story



2

Garage

Growing and active families will find ample space and privacy in the La Salle. This expansive home offers three distinct living quarters: a spacious master suite with generous walk-in closet space, a soaking tub, and double vanities; a smaller suite with a walk-in closet and full bathroom; and two bedrooms that share a full bathroom. The large kitchen, breakfast area, and family room form the central gathering space, complemented by a dedicated dining room near the front entrance. Covered porches at the front and rear provide additional entertaining areas, while an attached two-car garage leads to a drop zone and utility room on the right.

CONTACT US None

WWW.TILSONHOMES.COM



Tilson continuously improves home designs and reserves the right to modify home features and specifications without notice or obligation. Square footage is approximate and includes overall dimensions. Renderings are drawn to be substantially correct. Tilson standard features may vary by home design and/or location. Contact a Tilson Sales Associate for details. Current information as July 6, 2026, 12:51 p.m.



Elevation B - The La Salle

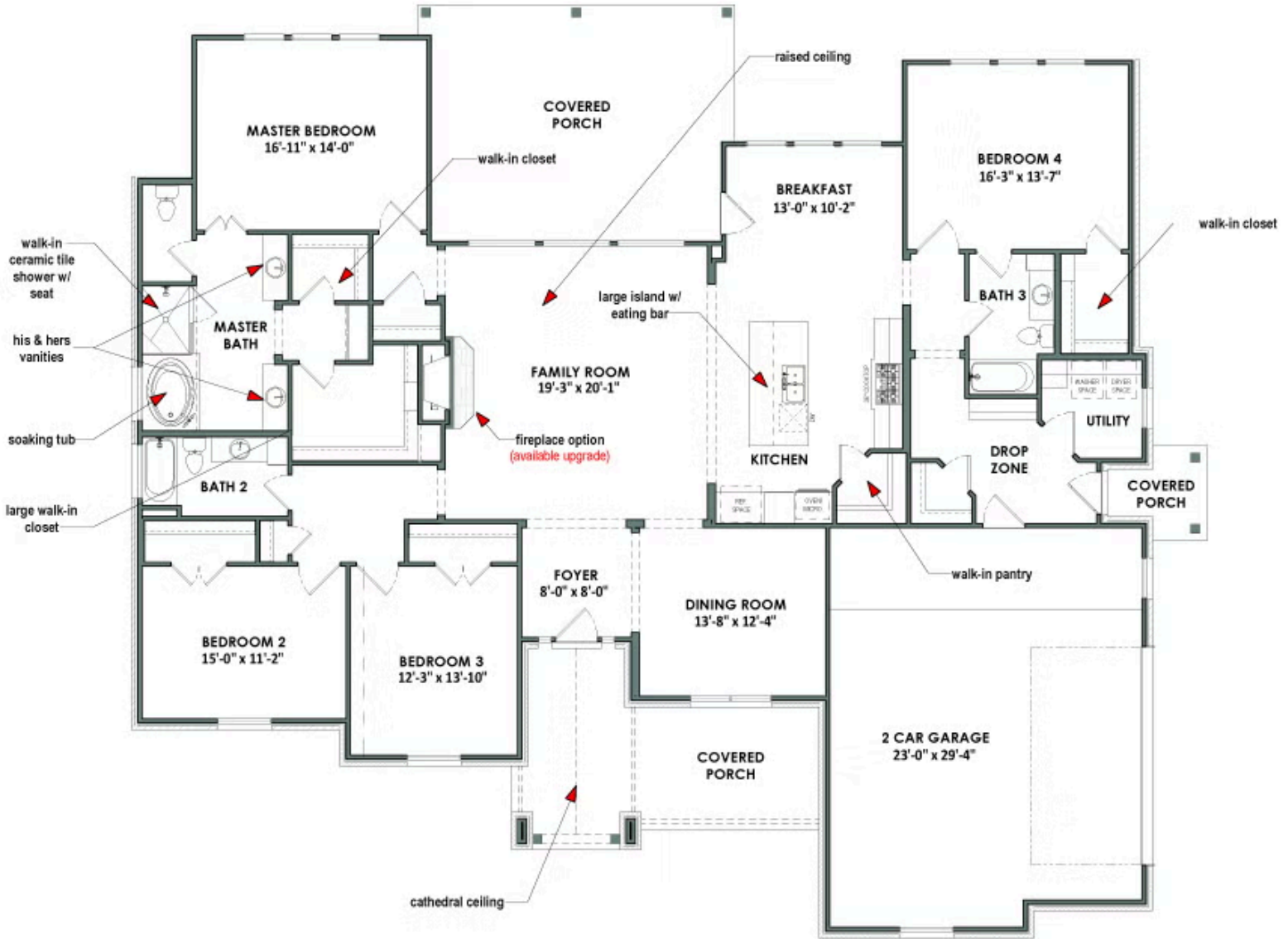
CONTACT US None

WWW.TILSONHOMES.COM



*Tilson continuously improves home designs and reserves the right to modify home features and specifications without notice or obligation. Square footage is approximate and includes overall dimensions. Renderings are drawn to be substantially correct. Tilson standard features may vary by home design and/or location. Contact a Tilson Sales Associate for details.
Current information as July 6, 2026, 12:51 p.m.*

Floor Plan | The La Salle



CONTACT US None

WWW.TILSONHOMES.COM

