



FROM \$351,600



1,957

Sq.Ft.



3

Bedrooms



2.0

Bathrooms



1.0

Story

The Angelina is designed around a spacious and bright gathering space. The front entrance's foyer opens into a connected family room, kitchen, and dining area, with a wall of windows and a covered porch at the rear. The kitchen features an island with a sink and large eating bar. There is also a walk-in pantry and an adjacent utility room that has space for a chest freezer. Next to the dining area is a master suite with double walk-in closets and an oversized shower with corner seat. Two bedrooms and a full bathroom are situated at the opposite end of the house, and a large study or optional bedroom connects to the foyer.

CONTACT US None

WWW.TILSONHOMES.COM



*Tilson continuously improves home designs and reserves the right to modify home features and specifications without notice or obligation. Square footage is approximate and includes overall dimensions. Renderings are drawn to be substantially correct. Tilson standard features may vary by home design and/or location. Contact a Tilson Sales Associate for details.
Current information as June 1, 2026, 3:28 p.m.*



Elevation D | The Angelina



Elevation C | The Angelina



Elevation B | The Angelina



Elevation A | The Angelina

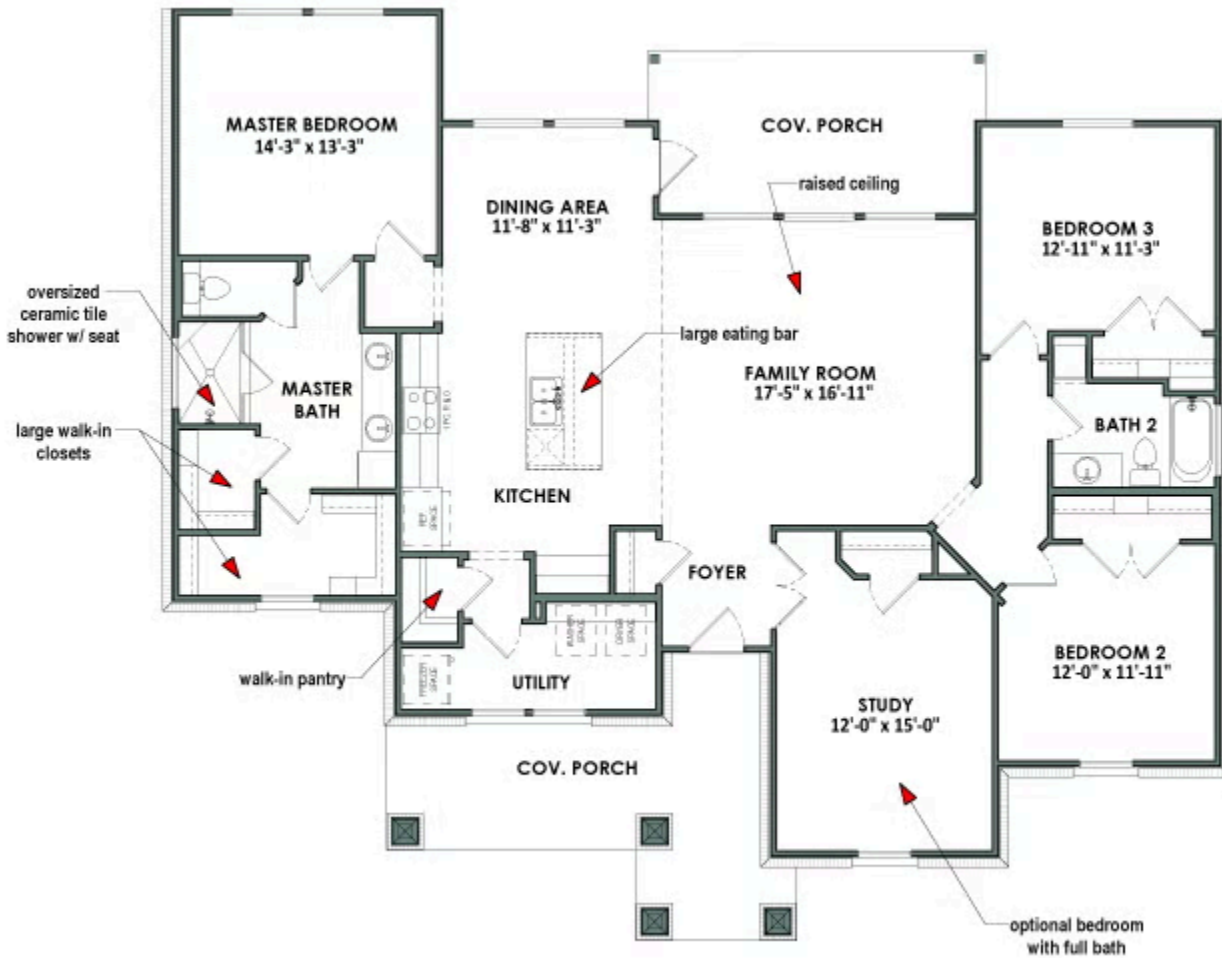
CONTACT US None

WWW.TILSONHOMES.COM



Tilson continuously improves home designs and reserves the right to modify home features and specifications without notice or obligation. Square footage is approximate and includes overall dimensions. Renderings are drawn to be substantially correct. Tilson standard features may vary by home design and/or location. Contact a Tilson Sales Associate for details. Current information as June 1, 2026, 3:28 p.m.

Floor Plan | Elevation B | The Angelina



CONTACT US None

WWW.TILSONHOMES.COM

