



## FROM \$279,900



**1,692**

Sq.Ft.



**3**

Bedrooms



**2.0**

Bathrooms



**1.0**

Story

At the entrance of the La Porte, a modest foyer opens into a dining area on the left, a coat closet on the right, and the family room ahead. The family room and kitchen share an open layout, with a wall of windows and an exterior door allowing plenty of natural light to fill the space. The kitchen includes a walk-in pantry, a sink island with an eating bar, and a spacious breakfast nook. At the front of the family room, a hallway leads to a utility room, two bedrooms, and a full bathroom, while a master suite with a large walk-in closet sits at the rear.

**CONTACT US** None

**WWW.TILSONHOMES.COM**



*Tilson continuously improves home designs and reserves the right to modify home features and specifications without notice or obligation. Square footage is approximate and includes overall dimensions. Renderings are drawn to be substantially correct. Tilson standard features may vary by home design and/or location. Contact a Tilson Sales Associate for details. Current information as May 27, 2026, 4:35 p.m.*

# LA PORTE

Palo Pinto County, TX

**TILSON**  
CUSTOM HOME BUILDERS



Elevation C - La Porte



Elevation A - La Porte



Elevation B - La Porte



Elevation D - La Porte

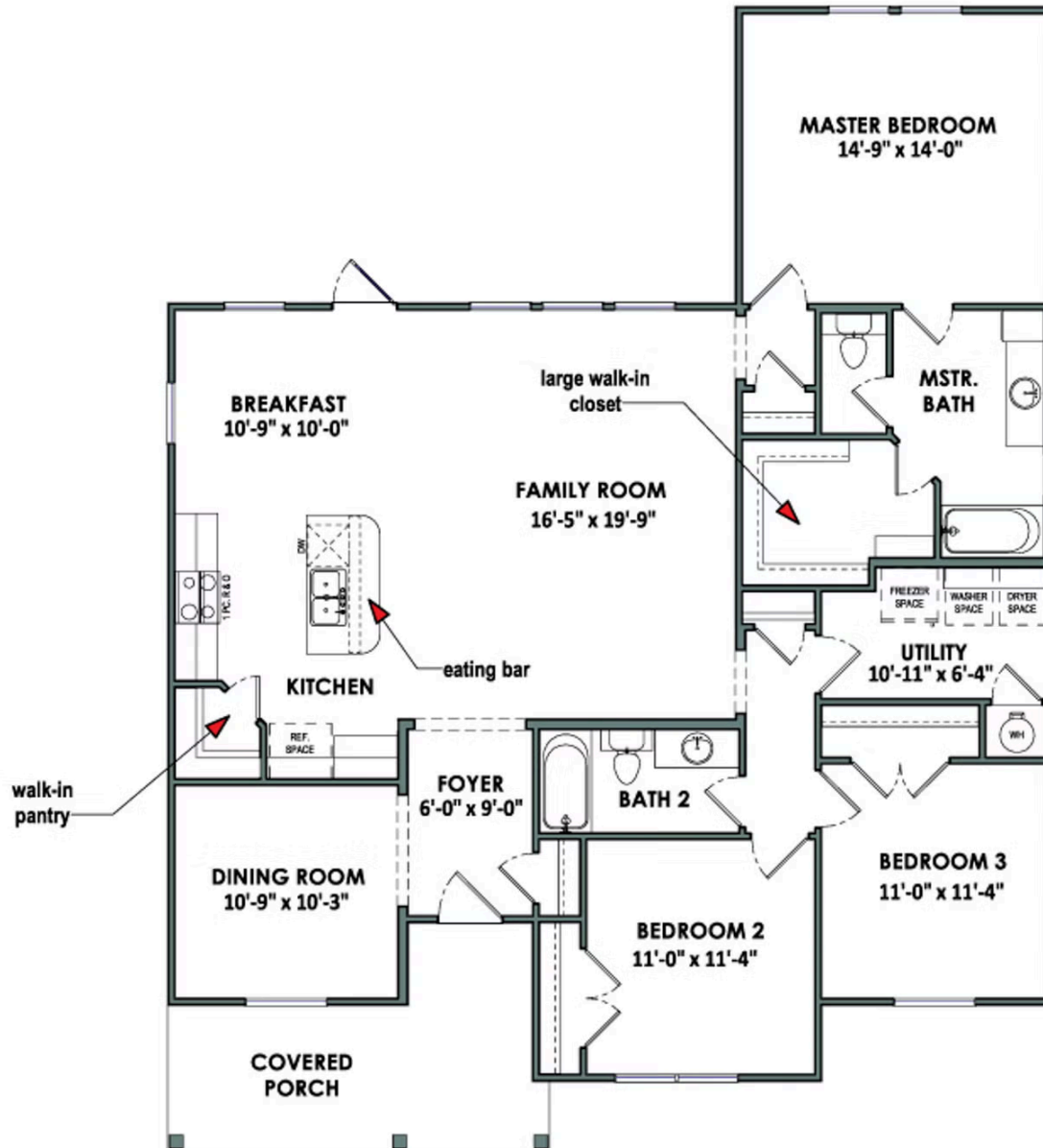
**CONTACT US** None

**WWW.TILSONHOMES.COM**



*Tilson continuously improves home designs and reserves the right to modify home features and specifications without notice or obligation. Square footage is approximate and includes overall dimensions. Renderings are drawn to be substantially correct. Tilson standard features may vary by home design and/or location. Contact a Tilson Sales Associate for details. Current information as May 27, 2026, 4:35 p.m.*

## Floorplan - La Porte



**CONTACT US** None

**WWW.TILSONHOMES.COM**

