



FROM \$297,500



1,626

Sq.Ft.



3

Bedrooms



2.0

Bathrooms



1.0

Story



0

Garage

The Harrisburg is an efficiently designed home with separate bedrooms and an open central gathering space. It opens immediately into a large family room with an eating bar and opposite sink separating it from the kitchen. The kitchen features an island, walk-in pantry, and dining area, and has an exterior door to the rear with an optional covered porch. The master suite with a spacious walk-in closet is situated to the left of the family room. On the right side is a hallway that branches off into two bedrooms, a utility room, and a full bathroom.

CONTACT US

WWW.TILSONHOMES.COM



HARRISBURG

Titus County, TX

TILSON
CUSTOM HOME BUILDERS



Elevation A - The Harrisburg



Elevation B - The Harrisburg



Elevation D - The Harrisburg

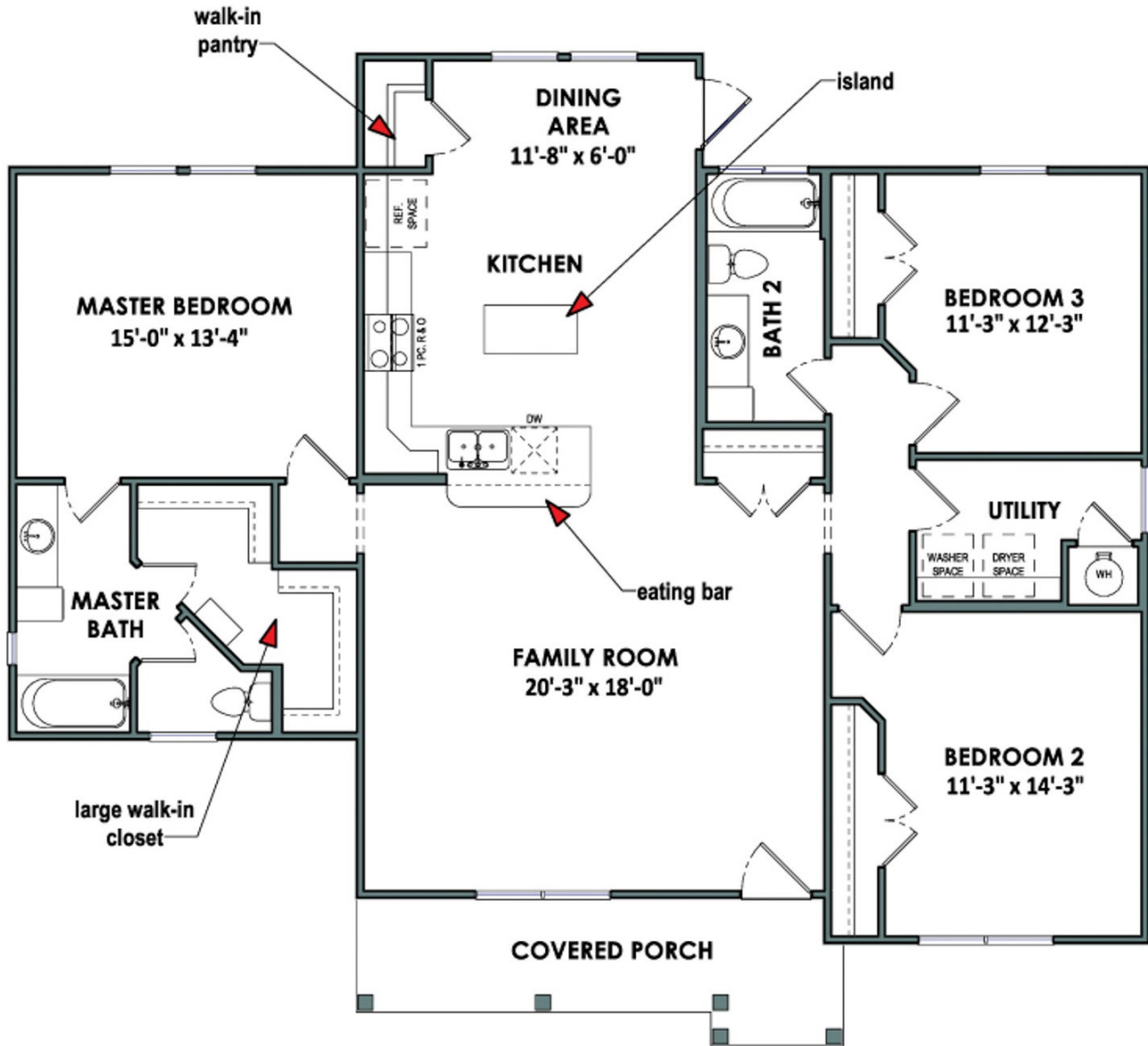
CONTACT US

WWW.TILSONHOMES.COM



Tilson continuously improves home designs and reserves the right to modify home features and specifications without notice or obligation. Square footage is approximate and includes overall dimensions. Renderings are drawn to be substantially correct. Tilson standard features may vary by home design and/or location. Contact a Tilson Sales Associate for details. Current information as June 7, 2023, 9:50 a.m.

Floorplan - The Harrisburg



CONTACT US

WWW.TILSONHOMES.COM

