



## FROM \$401,800



**2,009**

Sq.Ft.



**3**

Bedrooms



**2.0**

Bathrooms



**1.0**

Story



**0**

Garage

Families who love to host company and family holidays will love the layout of the Frio. The foyer at the front entrance flows into a large gathering area, with an open family room, dining area, and kitchen. The kitchen features a modest pantry and an island overlooking the space. A wall of windows and exterior door lead to a covered porch at the rear. Extending to the left of the foyer is a hub with two bedrooms with walk-in closets, a full bathroom, utility room, and desk space. The master suite is accessed by the dining area, and features its own large walk-in closet and a bathroom with a soaking tub and separate vanities.

**CONTACT US**

**WWW.TILSONHOMES.COM**



# FRIO

Bosque County, TX

**TILSON**  
CUSTOM HOME BUILDERS



Elevation C - The Frio

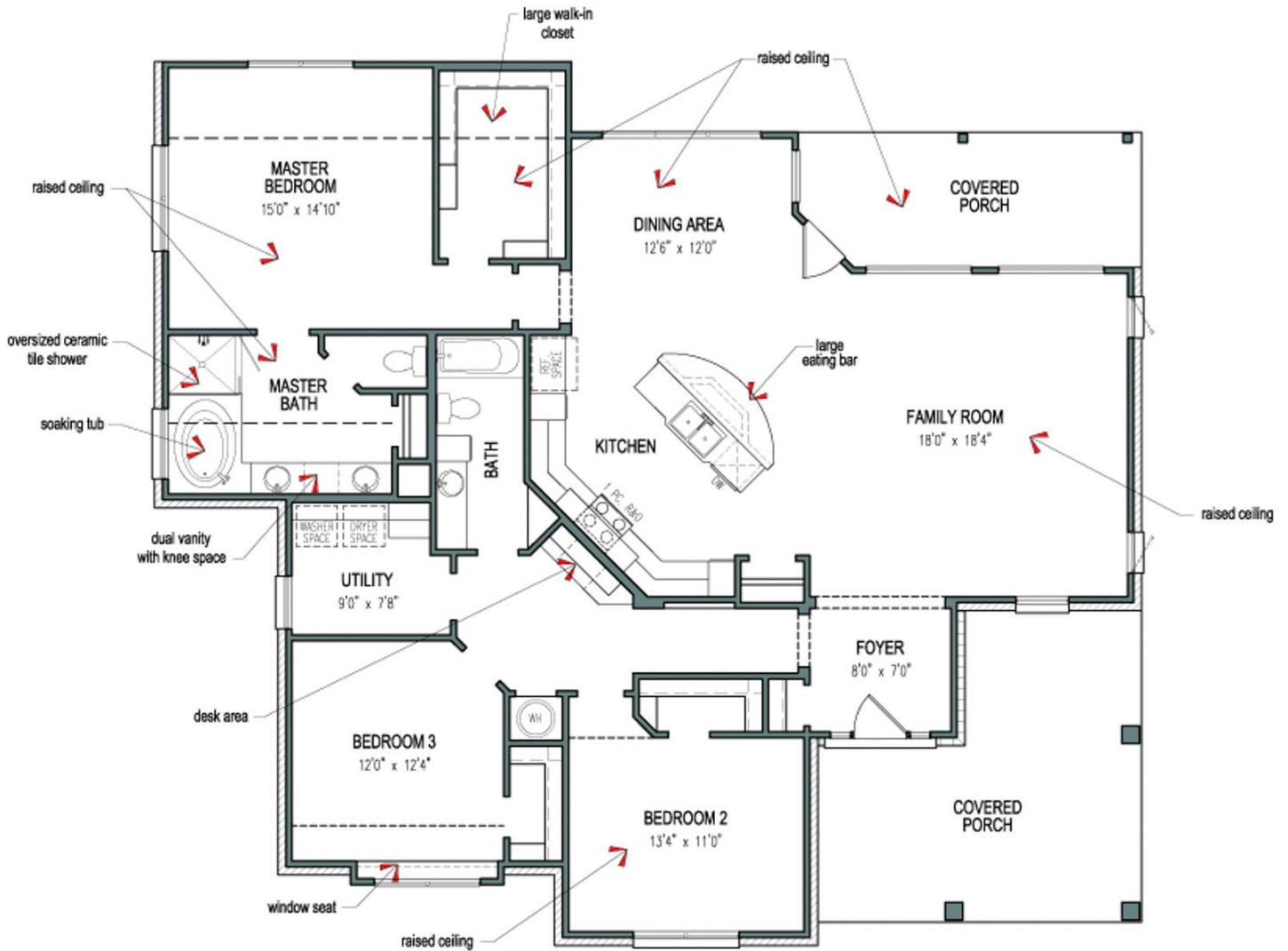
**CONTACT US**

**[WWW.TILSONHOMES.COM](http://WWW.TILSONHOMES.COM)**



*Tilson continuously improves home designs and reserves the right to modify home features and specifications without notice or obligation. Square footage is approximate and includes overall dimensions. Renderings are drawn to be substantially correct. Tilson standard features may vary by home design and/or location. Contact a Tilson Sales Associate for details.  
Current information as May 28, 2024, 2:55 p.m.*

## Floorplan - The Frio



CONTACT US

WWW.TILSONHOMES.COM

