



## FROM \$377,100



**2,105**

Sq.Ft.



**3**

Bedrooms



**2.5**

Bathrooms



**1.0**

Story



**None**

Garage

The Canyon is an elegant and spacious home. A large kitchen with a curved island and eating bar overlooks the adjacent family room and dining room, keeping the space bright and open. Branching off from the dining room is a secluded utility room with space for a chest freezer, as well as a small powder room, perfect for guests. Three bedrooms occupy the other side of the home, with separate entries accessible from the family room. The master suite is at the rear, featuring an oversize shower and grand walk-in closet. Two bedrooms and a full bathroom make up the other living quarters toward the front. Use the study near the entrance as an entertainment room or an office. The Canyon model at our [Bryan Design Center](#) showcases several custom options including the upstairs bonus space, attached two-car garage, jack and jill bathroom, and alternate kitchen.

**CONTACT US**

**WWW.TILSONHOMES.COM**



# CANYON

Falls County, TX

**TILSON**  
CUSTOM HOME BUILDERS



Elevation B | The Canyon



Elevation C | The Canyon



Elevation D | The Canyon



Elevation A | The Canyon

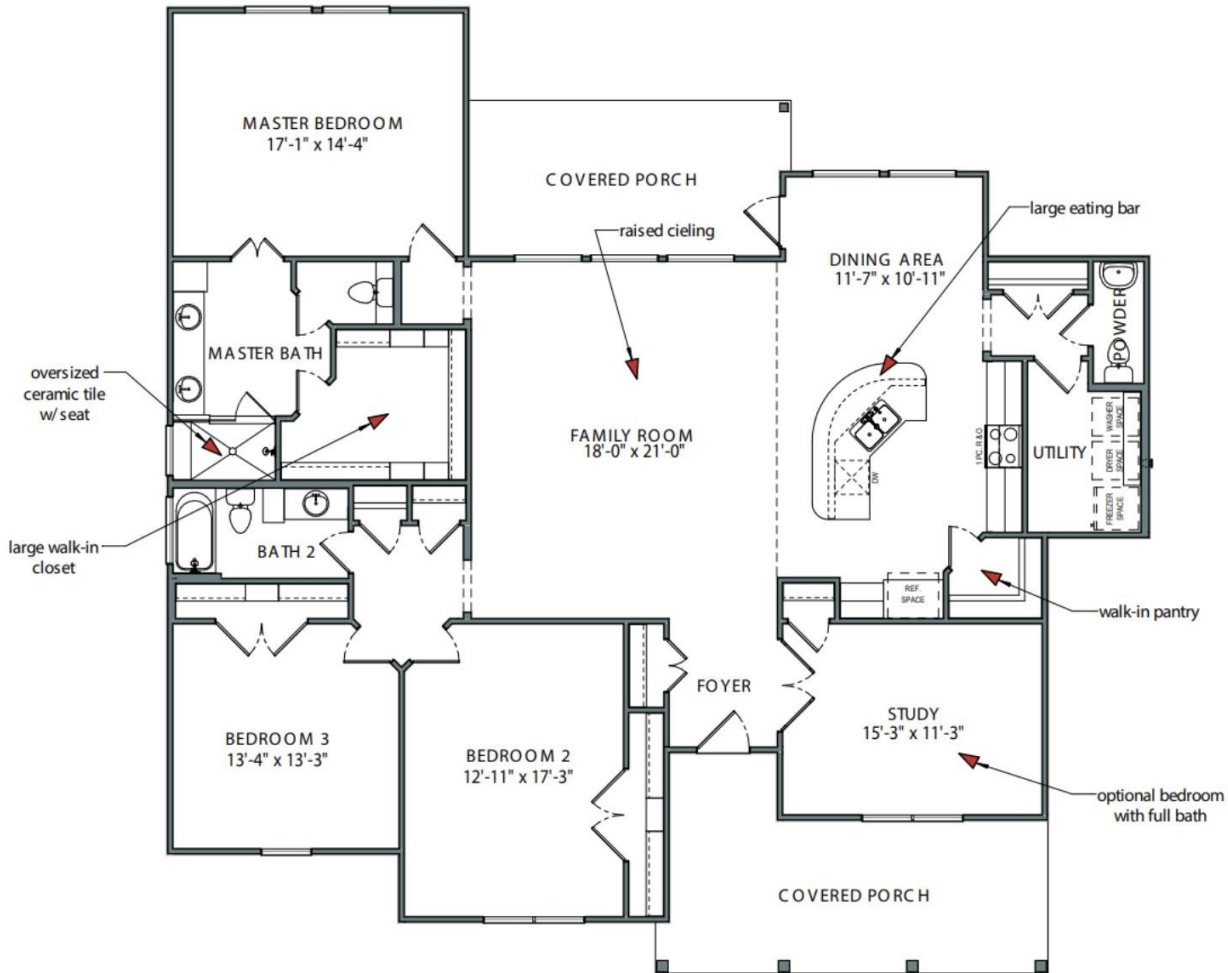
CONTACT US

[WWW.TILSONHOMES.COM](http://WWW.TILSONHOMES.COM)



*Tilson continuously improves home designs and reserves the right to modify home features and specifications without notice or obligation. Square footage is approximate and includes overall dimensions. Renderings are drawn to be substantially correct. Tilson standard features may vary by home design and/or location. Contact a Tilson Sales Associate for details. Current information as Feb. 14, 2024, 2:44 p.m.*

## Floor Plan | Elevation C | The Canyon



CONTACT US

[WWW.TILSONHOMES.COM](http://WWW.TILSONHOMES.COM)

