



## FROM \$315,000



**1,773**

Sq.Ft.



**3**

Bedrooms



**2.0**

Bathrooms



**1.0**

Story

The Whitney is a thoughtfully designed home that combines spacious living with an abundance of natural light. Large windows throughout the house create a bright and inviting atmosphere. The foyer opens into a generous family room that flows effortlessly into the open-concept dining area and kitchen. The kitchen features a central island with an eating bar, a walk-in pantry, and a nearby utility room with extra freezer space. Privately located at the back of the home, the master suite includes two sizable walk-in closets and dual vanities. At the front of the home, two additional bedrooms each include large closets and share a full bathroom. Covered front and rear porches add the perfect finishing touch to this beautifully crafted home.

**CONTACT US**

**WWW.TILSONHOMES.COM**



*Tilson continuously improves home designs and reserves the right to modify home features and specifications without notice or obligation. Square footage is approximate and includes overall dimensions. Renderings are drawn to be substantially correct. Tilson standard features may vary by home design and/or location. Contact a Tilson Sales Associate for details.  
Current information as Jan. 5, 2026, 9:18 a.m.*

# WHITNEY

Angelina County, TX

**TILSON**  
CUSTOM HOME BUILDERS



Elevation A - The Whitney



Elevation B - The Whitney



Elevation C - The Whitney



Elevation D - The Whitney

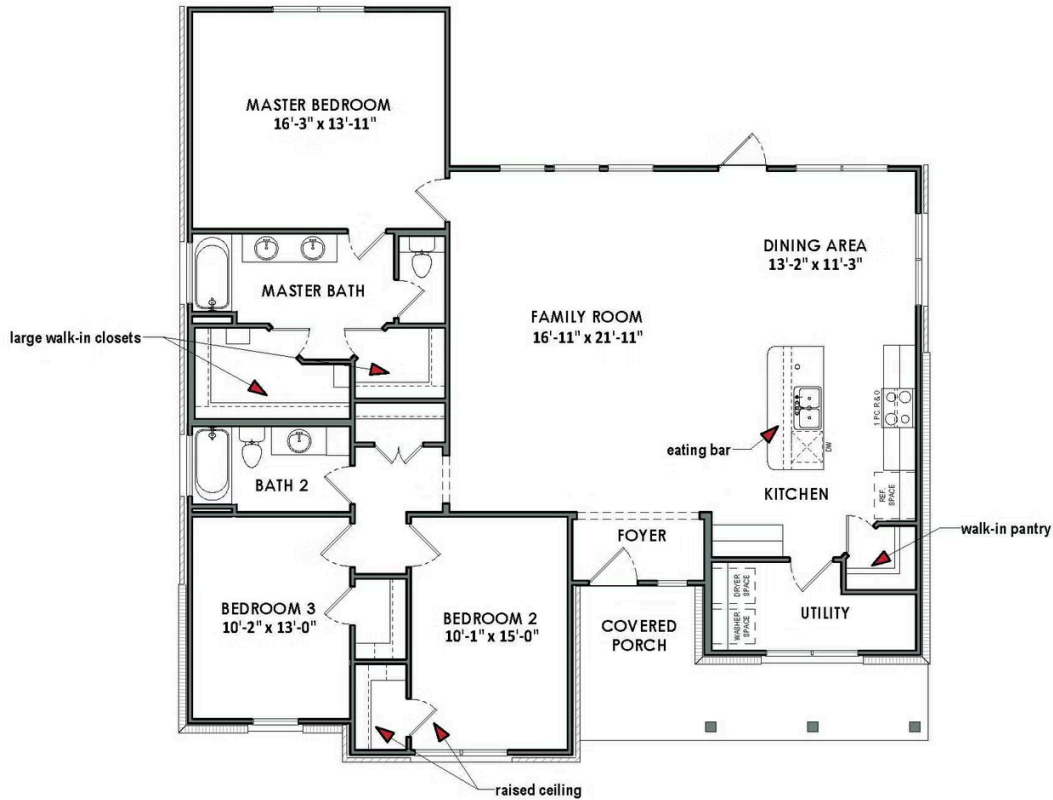
**CONTACT US**

**[WWW.TILSONHOMES.COM](http://WWW.TILSONHOMES.COM)**



*Tilson continuously improves home designs and reserves the right to modify home features and specifications without notice or obligation. Square footage is approximate and includes overall dimensions. Renderings are drawn to be substantially correct. Tilson standard features may vary by home design and/or location. Contact a Tilson Sales Associate for details.  
Current information as Jan. 5, 2026, 9:18 a.m.*

**Floorplan - The Whitney D**



**CONTACT US**

**WWW.TILSONHOMES.COM**



*Tilson continuously improves home designs and reserves the right to modify home features and specifications without notice or obligation. Square footage is approximate and includes overall dimensions. Renderings are drawn to be substantially correct. Tilson standard features may vary by home design and/or location. Contact a Tilson Sales Associate for details. Current information as Jan. 5, 2026, 9:18 a.m.*