



FROM \$452,800



1,937

Sq.Ft.



3

Bedrooms



2.0

Bathrooms



4

Garage

The Marshall is a stunning barndominium-style home with three spacious bedrooms and two full bathrooms. The four car garage boasts raised ceilings, providing ample storage space for all your vehicles and equipment. Once you enter the home, you'll immediately appreciate the cathedral ceiling with the open floor concept, which truly makes the family area feel grand and inviting. The master suite is complete with his-and-hers sinks and dual walk-in closets. Whether you're cooking in the spacious kitchen, relaxing in the cozy living room, or enjoying the fresh air on the large covered porch, the Marshall is the perfect place to call home.

CONTACT US None

WWW.TILSONHOMES.COM



Tilson continuously improves home designs and reserves the right to modify home features and specifications without notice or obligation. Square footage is approximate and includes overall dimensions. Renderings are drawn to be substantially correct. Tilson standard features may vary by home design and/or location. Contact a Tilson Sales Associate for details. Current information as April 7, 2025, 10:59 a.m.



Elevation A | The Marshall



Elevation B | The Marshall

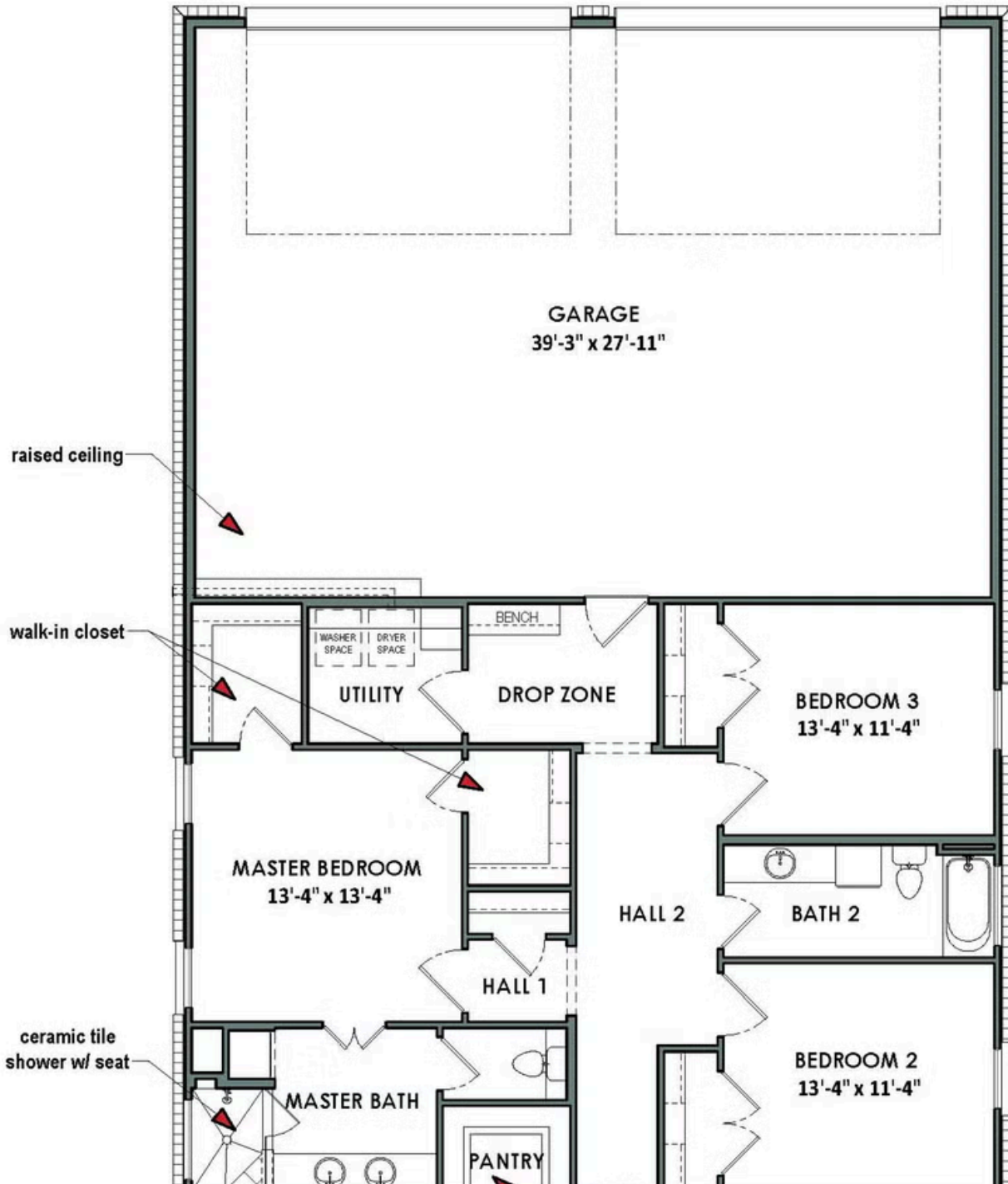
CONTACT US None

WWW.TILSONHOMES.COM



*Tilson continuously improves home designs and reserves the right to modify home features and specifications without notice or obligation. Square footage is approximate and includes overall dimensions. Renderings are drawn to be substantially correct. Tilson standard features may vary by home design and/or location. Contact a Tilson Sales Associate for details.
Current information as April 7, 2025, 10:59 a.m.*

Floor Plan - Elevation A | The Marshall



CONTACT US None

WWW.TILSONHOMES.COM

