



## FROM \$414,300



**2,310**

Sq.Ft.



**3**

Bedrooms



**3.5**

Bathrooms

The Barton Springs boasts 3 bedrooms, 2.5 bathrooms, and a versatile study for all your needs. The master suite is a grand retreat, complete with two large walk-in closets, his and hers sinks, and an oversized walk-in shower. You won't be able to resist hosting friends and family with the open-concept family room, dining room, and kitchen, which includes a large island, eating bar, and walk-in pantry.

**CONTACT US** None

**WWW.TILSONHOMES.COM**



*Tilson continuously improves home designs and reserves the right to modify home features and specifications without notice or obligation. Square footage is approximate and includes overall dimensions. Renderings are drawn to be substantially correct. Tilson standard features may vary by home design and/or location. Contact a Tilson Sales Associate for details. Current information as Jan. 5, 2026, 9:53 a.m.*

# BARTON SPRINGS

Lee County, TX

**TILSON**  
CUSTOM HOME BUILDERS



Elevation D | The Barton Springs



Elevation A | The Barton Springs



Elevation B | The Barton Springs



Elevation C | The Barton Springs



Elevation E | The Barton Springs

**CONTACT US** None

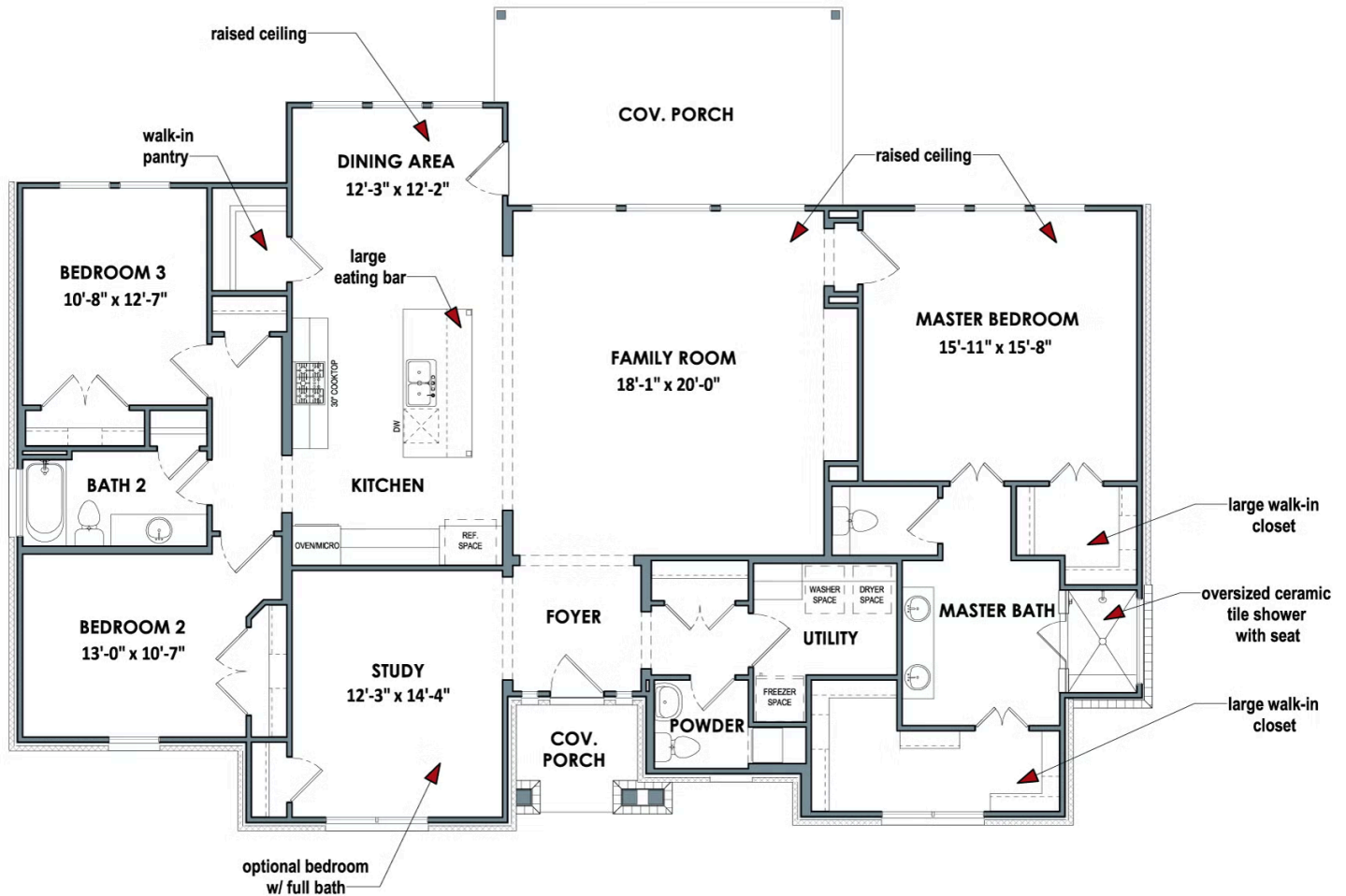
**WWW.TILSONHOMES.COM**



*Tilson continuously improves home designs and reserves the right to modify home features and specifications without notice or obligation. Square footage is approximate and includes overall dimensions. Renderings are drawn to be substantially correct. Tilson standard features may vary by home design and/or location. Contact a Tilson Sales Associate for details. Current information as Jan. 5, 2026, 9:53 a.m.*



## Floor Plan | Elevation D | The Barton Springs



CONTACT US None

WWW.TILSONHOMES.COM

