



FROM \$625,700



2,856

Sq.Ft.



3

Bedrooms



2.5

Bathrooms



1.0

Story



2

Garage

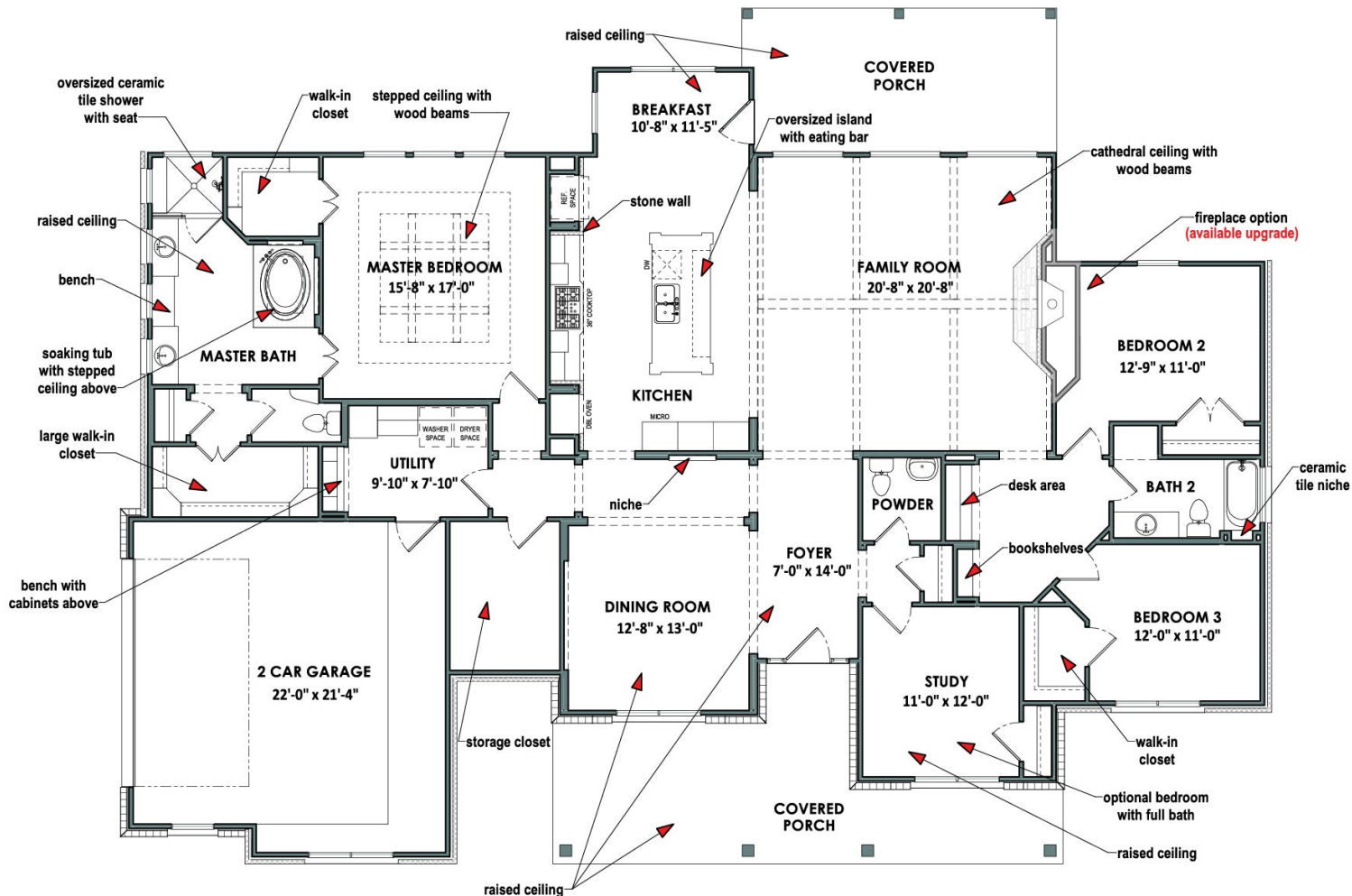
The Breckenridge is a grand and spacious home with an attached two-car garage and plenty of storage. Coming in from a covered porch, a large foyer opens into the dining room, creating a comfortable space for meals and gatherings. The foyer leads into a large family room with a cathedral ceiling, which flows into a kitchen with a long central island and attached breakfast area. Two bedrooms, a bathroom, and a desk area make up the living quarters on the right side of the house, and an impressive master suite with a soaking tub, dual separate vanities, and two walk-in closets is situated on the left. If you need another bedroom, convert the study and half bath that branch off of the foyer into a smaller suite.

CONTACT US

WWW.TILSONHOMES.COM



Single Story | The Breckenridge



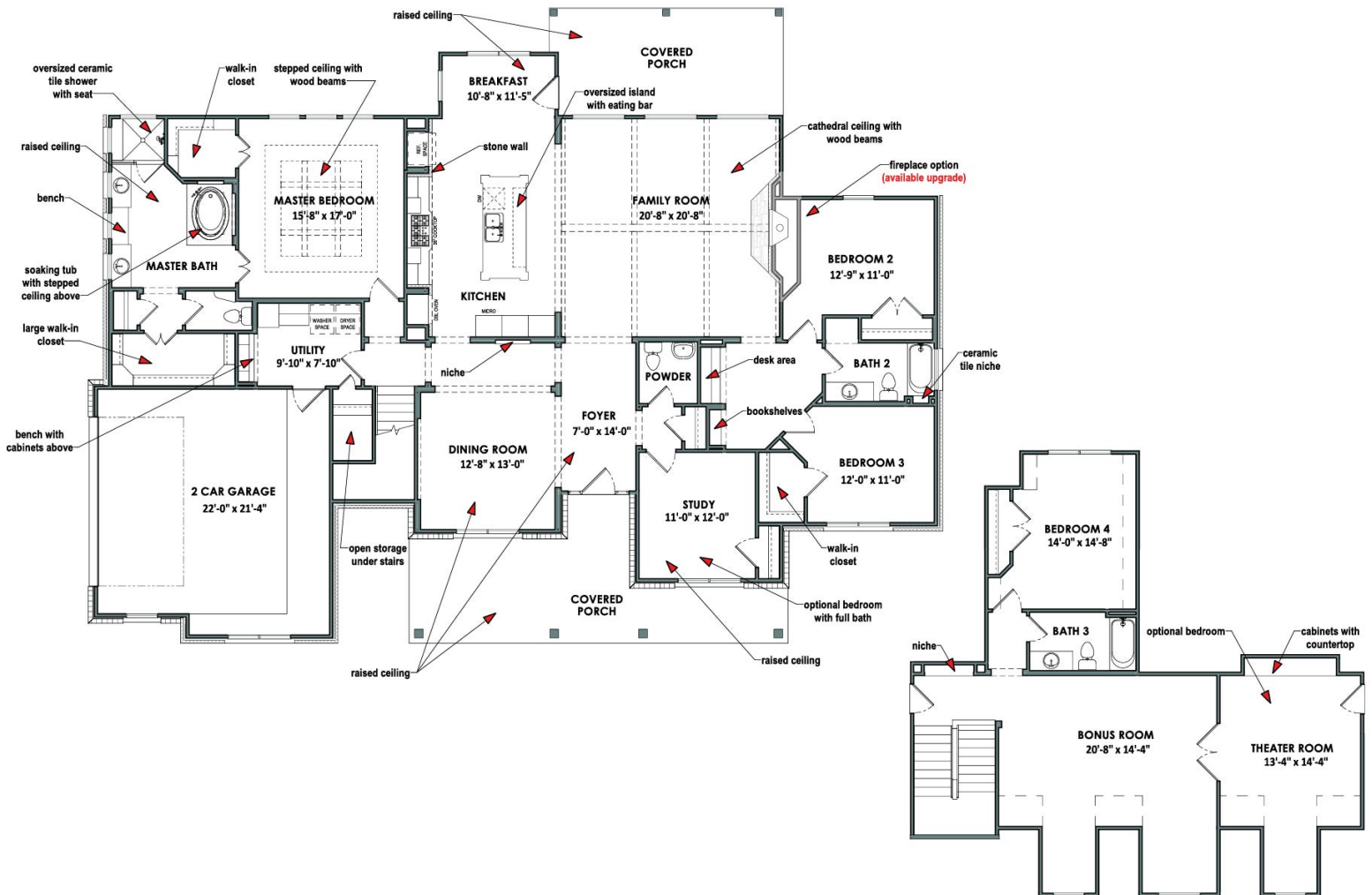
CONTACT US

WWW.TILSONHOMES.COM

Tilson continuously improves home designs and reserves the right to modify home features and specifications without notice or obligation. Square footage is approximate and includes overall dimensions. Renderings are drawn to be substantially correct. Tilson standard features may vary by home design and/or location. Contact a Tilson Sales Associate for details. Current information as Sept. 22, 2023, 3:42 p.m.



Optional Bonus Space Layout | The Breckenridge



CONTACT US

WWW.TILSONHOMES.COM

Tilson continuously improves home designs and reserves the right to modify home features and specifications without notice or obligation. Square footage is approximate and includes overall dimensions. Renderings are drawn to be substantially correct. Tilson standard features may vary by home design and/or location. Contact a Tilson Sales Associate for details. Current information as Sept. 22, 2023, 3:42 p.m.



EQUAL HOUSING OPPORTUNITY