



## FROM \$360,000



**2,222**

Sq.Ft.



**3**

Bedrooms



**2.5**

Bathrooms



**1.0**

Story

The Brazoria Floor Plan is perfect for a spacious and well-thought-out living space. It offers three bedrooms, two full bathrooms, and a powder bathroom located conveniently off of the foyer. The master suite boasts dual vanities along with his and her closets. Additionally, there is a study, a walk-in pantry, and a large utility room. This floor plan blends practicality with spaciousness making it perfect for anyone wanting to combine comfort with convenience.

**CONTACT US** None

**WWW.TILSONHOMES.COM**



*Tilson continuously improves home designs and reserves the right to modify home features and specifications without notice or obligation. Square footage is approximate and includes overall dimensions. Renderings are drawn to be substantially correct. Tilson standard features may vary by home design and/or location. Contact a Tilson Sales Associate for details.  
Current information as June 1, 2026, 3:25 p.m.*

# BRAZORIA

Colorado County, TX

**TILSON**  
CUSTOM HOME BUILDERS



Brazoria A | Front Exterior



Brazoria B | Front Exterior



Brazoria C | Front Exterior



Brazoria D | Front Exterior

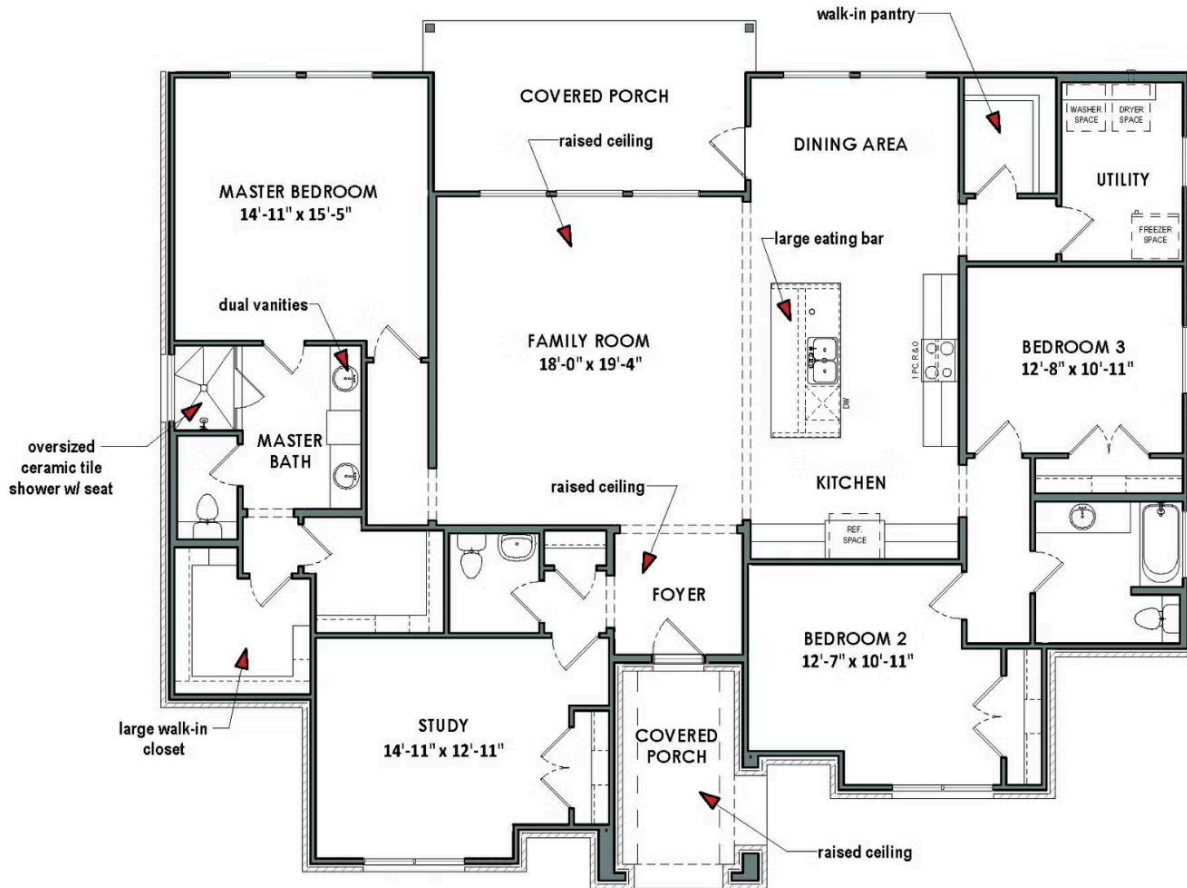
**CONTACT US** None

**WWW.TILSONHOMES.COM**



*Tilson continuously improves home designs and reserves the right to modify home features and specifications without notice or obligation. Square footage is approximate and includes overall dimensions. Renderings are drawn to be substantially correct. Tilson standard features may vary by home design and/or location. Contact a Tilson Sales Associate for details. Current information as June 1, 2026, 3:25 p.m.*

## Brazoria E | Floor Plan



CONTACT US None

[WWW.TILSONHOMES.COM](http://WWW.TILSONHOMES.COM)

