



## FROM \$483,700



**2,669**

Sq.Ft.



**3**

Bedrooms



**2.5**

Bathrooms



**1.0**

Story



**2**

Garage

The Fredericksburg strikes a perfect balance of space and versatility, ideal for growing families. On the left side of the home, you'll find a utility room leading to the attached two-car garage, a powder room, and a spacious master suite with a large walk-in closet, oversized shower, and soaking tub. A hallway connects to the living quarters on the opposite side, which include two bedrooms, a full bathroom, and a desk space. Uniting both sides, the kitchen with its attached breakfast nook and the expansive family room are located at the rear, while the front features a study and a foyer that flows into an open dining area.

**CONTACT US**

**[WWW.TILSONHOMES.COM](http://WWW.TILSONHOMES.COM)**



*Tilson continuously improves home designs and reserves the right to modify home features and specifications without notice or obligation. Square footage is approximate and includes overall dimensions. Renderings are drawn to be substantially correct. Tilson standard features may vary by home design and/or location. Contact a Tilson Sales Associate for details.  
Current information as May 21, 2026, 12:19 p.m.*

# FREDERICKSBURG

Wharton County, TX

**TILSON**  
CUSTOM HOME BUILDERS



Elevation B - The Fredericksburg



Elevation C - The Fredericksburg

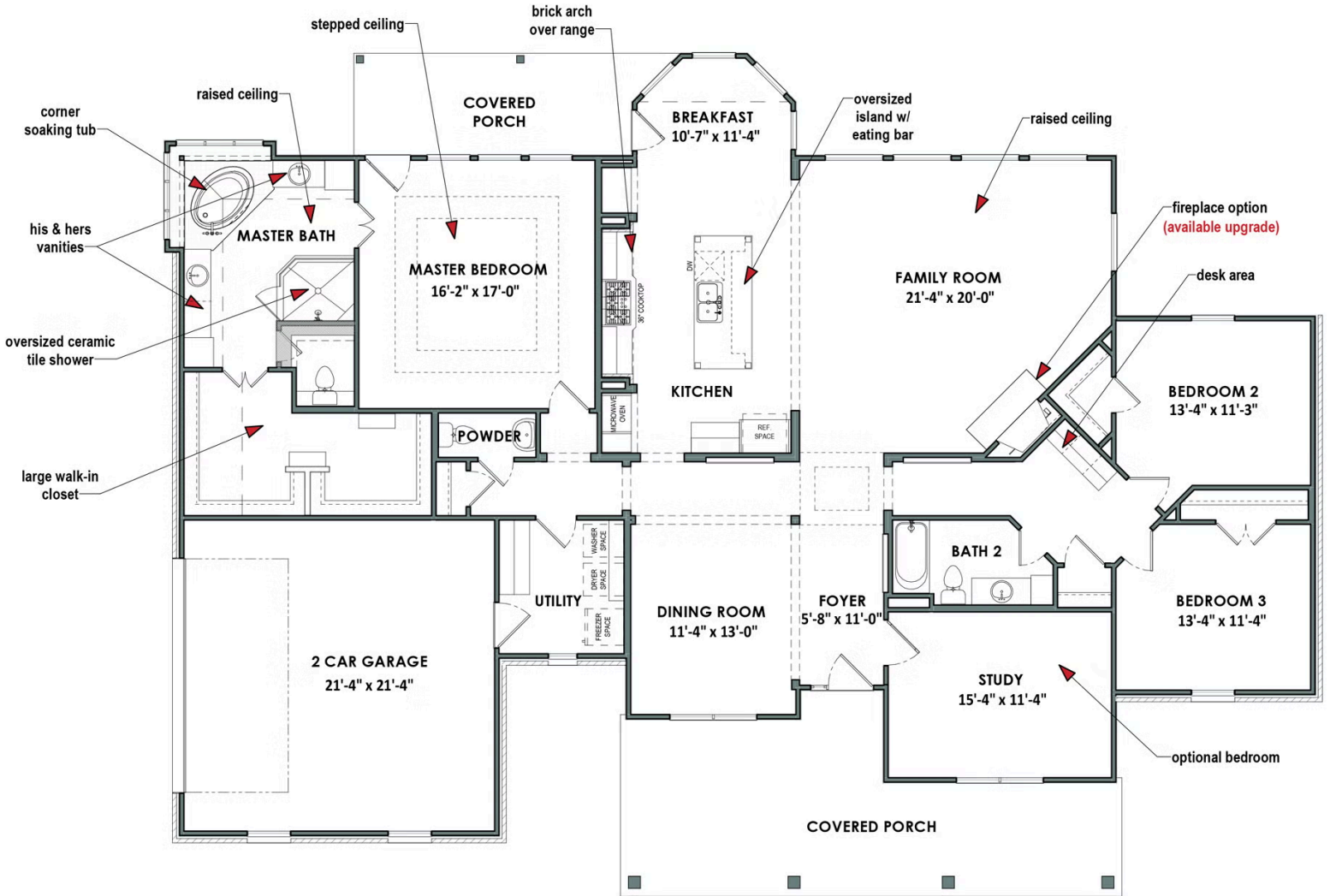
**CONTACT US**

**[WWW.TILSONHOMES.COM](http://WWW.TILSONHOMES.COM)**



*Tilson continuously improves home designs and reserves the right to modify home features and specifications without notice or obligation. Square footage is approximate and includes overall dimensions. Renderings are drawn to be substantially correct. Tilson standard features may vary by home design and/or location. Contact a Tilson Sales Associate for details.  
Current information as May 21, 2026, 12:19 p.m.*

## Floor Plan - The Fredericksburg C



**CONTACT US**

**WWW.TILSONHOMES.COM**



Tilson continuously improves home designs and reserves the right to modify home features and specifications without notice or obligation. Square footage is approximate and includes overall dimensions. Renderings are drawn to be substantially correct. Tilson standard features may vary by home design and/or location. Contact a Tilson Sales Associate for details. Current information as May 21, 2026, 12:19 p.m.