



FROM \$334,500



1,862

Sq.Ft.



3

Bedrooms



2.0

Bathrooms



1.0

Story

The Crockett combines open, inviting spaces with private retreats. The kitchen, featuring a curved eating bar, overlooks the family and dining rooms while floor-to-ceiling windows brighten the interior and frame views of the covered porch. A secluded utility room adds convenience and two bedrooms with walk-in closets branch off for privacy. The master suite offers luxury with a spacious walk-in closet, dual vanities, an enclosed toilet, and an oversized walk-in shower with seating. The Crockett perfectly balances functionality and comfort for your family.

CONTACT US

WWW.TILSONHOMES.COM



*Tilson continuously improves home designs and reserves the right to modify home features and specifications without notice or obligation. Square footage is approximate and includes overall dimensions. Renderings are drawn to be substantially correct. Tilson standard features may vary by home design and/or location. Contact a Tilson Sales Associate for details.
Current information as July 7, 2026, 11:41 a.m.*



Elevation E - The Crockett



Elevation D - The Crockett



Elevation C - The Crockett



Elevation B - The Crockett

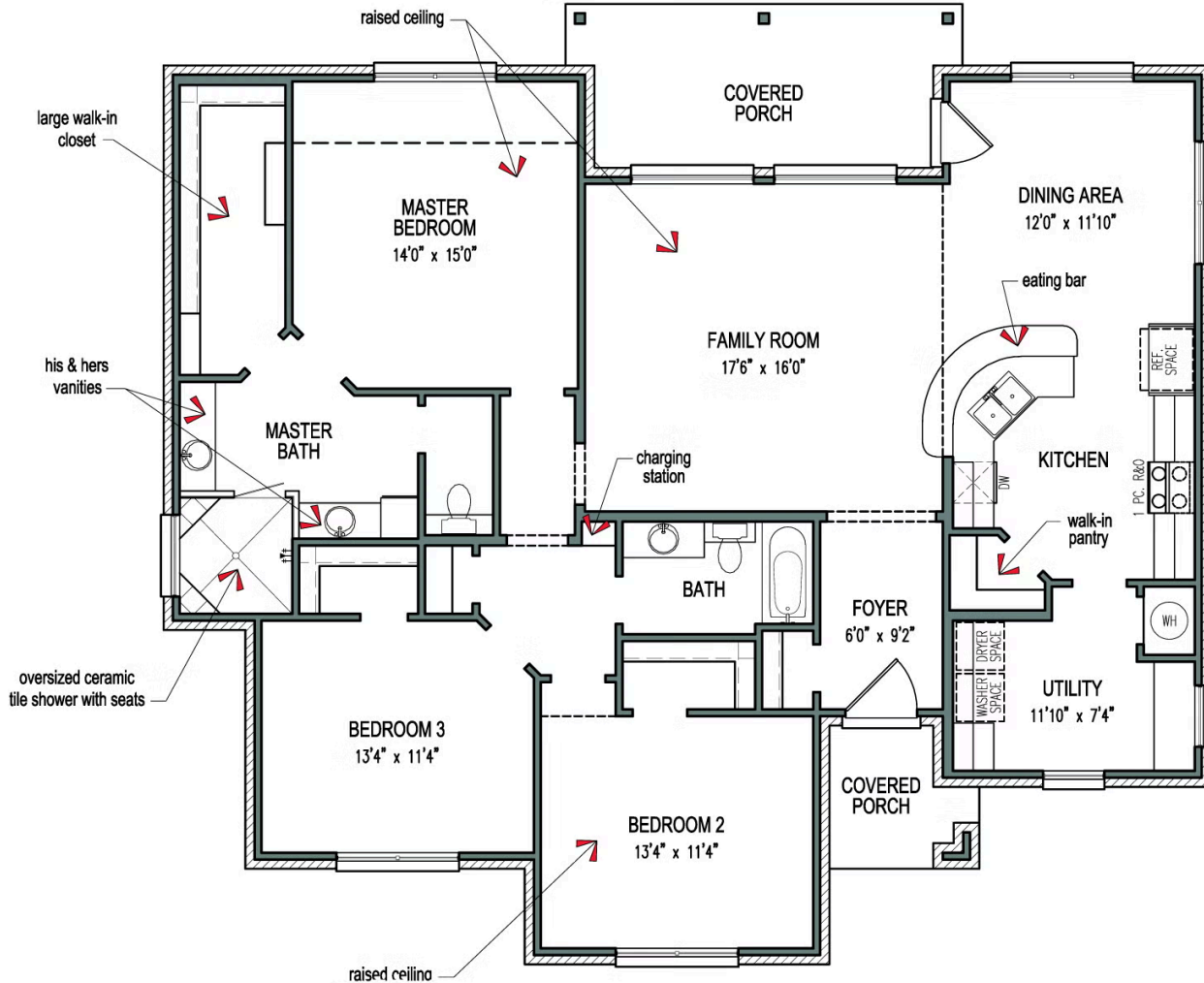
CONTACT US

WWW.TILSONHOMES.COM



*Tilson continuously improves home designs and reserves the right to modify home features and specifications without notice or obligation. Square footage is approximate and includes overall dimensions. Renderings are drawn to be substantially correct. Tilson standard features may vary by home design and/or location. Contact a Tilson Sales Associate for details.
Current information as July 7, 2026, 11:41 a.m.*

Floorplan - The Crockett



CONTACT US

WWW.TILSONHOMES.COM



Tilson continuously improves home designs and reserves the right to modify home features and specifications without notice or obligation. Square footage is approximate and includes overall dimensions. Renderings are drawn to be substantially correct. Tilson standard features may vary by home design and/or location. Contact a Tilson Sales Associate for details. Current information as July 7, 2026, 11:41 a.m.