



# FROM \$342,500



**2,138**

Sq.Ft.



**3**

Bedrooms



**2.5**

Bathrooms



**1.0**

Story

The 4 bedroom, 2.5 bathroom Cisco is the perfect place to call home. With a raised ceiling in the family room and foyer, this home feels open and spacious. The large kitchen island with an eating bar and walk-in pantry provides plenty of space for cooking and storing food. The master bath features an oversized walk-in shower, dual vanities, and a large walk-in closet. The split bedroom design gives everyone privacy in their own space.

**CONTACT US** None

**WWW.TILSONHOMES.COM**



*Tilson continuously improves home designs and reserves the right to modify home features and specifications without notice or obligation. Square footage is approximate and includes overall dimensions. Renderings are drawn to be substantially correct. Tilson standard features may vary by home design and/or location. Contact a Tilson Sales Associate for details. Current information as June 10, 2026, 1:55 p.m.*



Elevation A | The Cisco



Elevation B | The Cisco



Elevation C | The Cisco



Elevation D | The Cisco



Floorplan - Elevation E | The Cisco



Elevation E | The Cisco

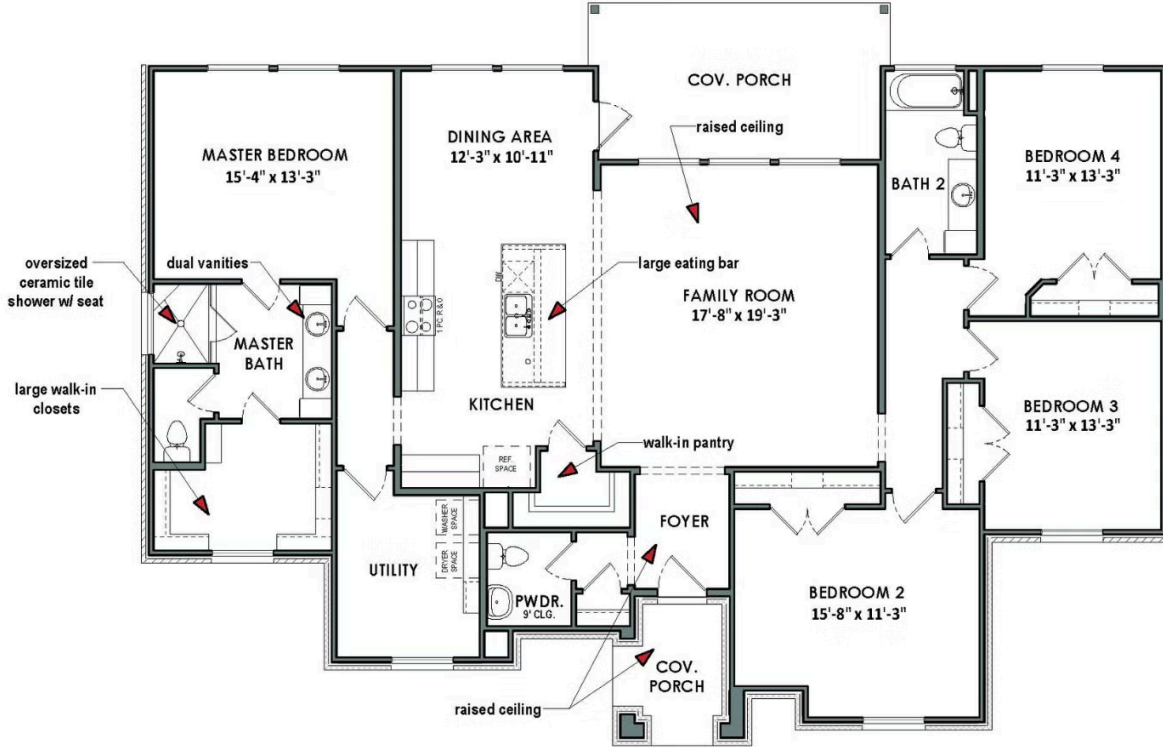
**CONTACT US** None

**WWW.TILSONHOMES.COM**



*Tilson continuously improves home designs and reserves the right to modify home features and specifications without notice or obligation. Square footage is approximate and includes overall dimensions. Renderings are drawn to be substantially correct. Tilson standard features may vary by home design and/or location. Contact a Tilson Sales Associate for details. Current information as June 10, 2026, 1:55 p.m.*

## Floor Plan | Elevation E | Cisco



**CONTACT US** None

**WWW.TILSONHOMES.COM**

