



FROM \$284,000



1,626

Sq.Ft.



3

Bedrooms



2.0

Bathrooms



1.0

Story

The Harrisburg is an efficiently designed home featuring separate bedrooms and a central open gathering space. Upon entry, you are welcomed into a large family room, separated from the kitchen by an eating bar and opposite sink. The kitchen includes an island, walk-in pantry, and dining area, with an exterior door leading to the rear and an optional covered porch. The master suite, complete with a spacious walk-in closet, is located to the left of the family room. On the right side, a hallway leads to two bedrooms, a utility room, and a full bathroom.

CONTACT US None

WWW.TILSONHOMES.COM



Tilson continuously improves home designs and reserves the right to modify home features and specifications without notice or obligation. Square footage is approximate and includes overall dimensions. Renderings are drawn to be substantially correct. Tilson standard features may vary by home design and/or location. Contact a Tilson Sales Associate for details. Current information as July 7, 2026, 11:32 a.m.

HARRISBURG

Llano County, TX

TILSON
CUSTOM HOME BUILDERS



Elevation A - The Harrisburg



Elevation B - The Harrisburg



Elevation D - The Harrisburg

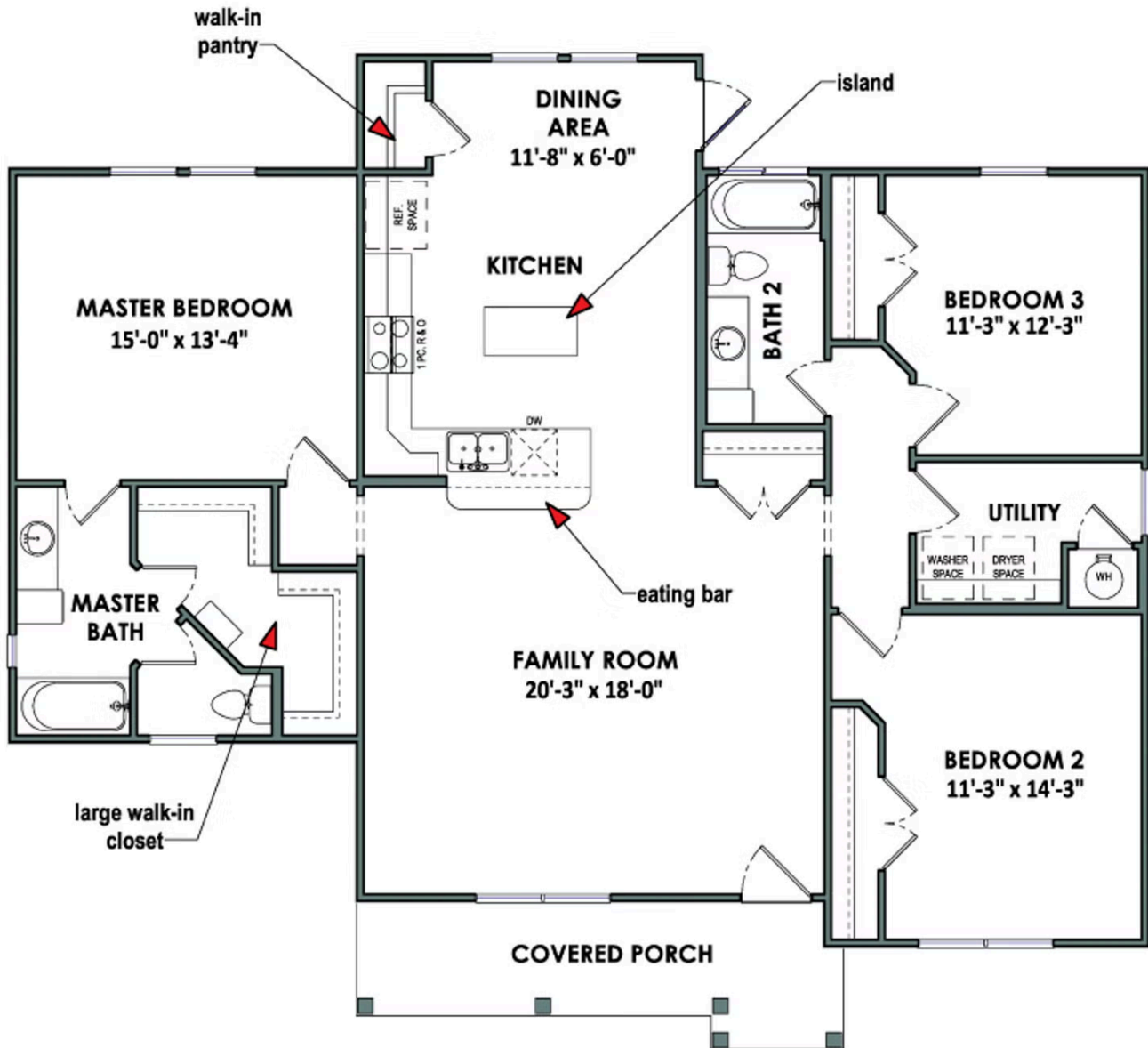
CONTACT US None

WWW.TILSONHOMES.COM



*Tilson continuously improves home designs and reserves the right to modify home features and specifications without notice or obligation. Square footage is approximate and includes overall dimensions. Renderings are drawn to be substantially correct. Tilson standard features may vary by home design and/or location. Contact a Tilson Sales Associate for details.
Current information as July 7, 2026, 11:32 a.m.*

Floorplan - The Harrisburg



CONTACT US None

WWW.TILSONHOMES.COM

