



FROM \$252,400



1,394

Sq.Ft.



3

Bedrooms



2.0

Bathrooms



1.0

Story

The main gathering space in the San Felipe is a wide family room that opens into the adjacent kitchen and dining area, separated by a small island with an eating bar. An exterior door sits at the rear of the dining area, with an optional 12- or 30-foot covered porch. Back toward the front of the home, a hallway branches off from the family room, giving access to a highly customizable master suite with a walk-in closet, a separate full bathroom, a utility closet, and two bedrooms.

CONTACT US None

WWW.TILSONHOMES.COM



*Tilson continuously improves home designs and reserves the right to modify home features and specifications without notice or obligation. Square footage is approximate and includes overall dimensions. Renderings are drawn to be substantially correct. Tilson standard features may vary by home design and/or location. Contact a Tilson Sales Associate for details.
Current information as Jan. 5, 2026, 9:52 a.m.*



Elevation A - The San Felipe



Elevation B - The San Felipe



Elevation C - The San Felipe



Elevation D - The San Felipe

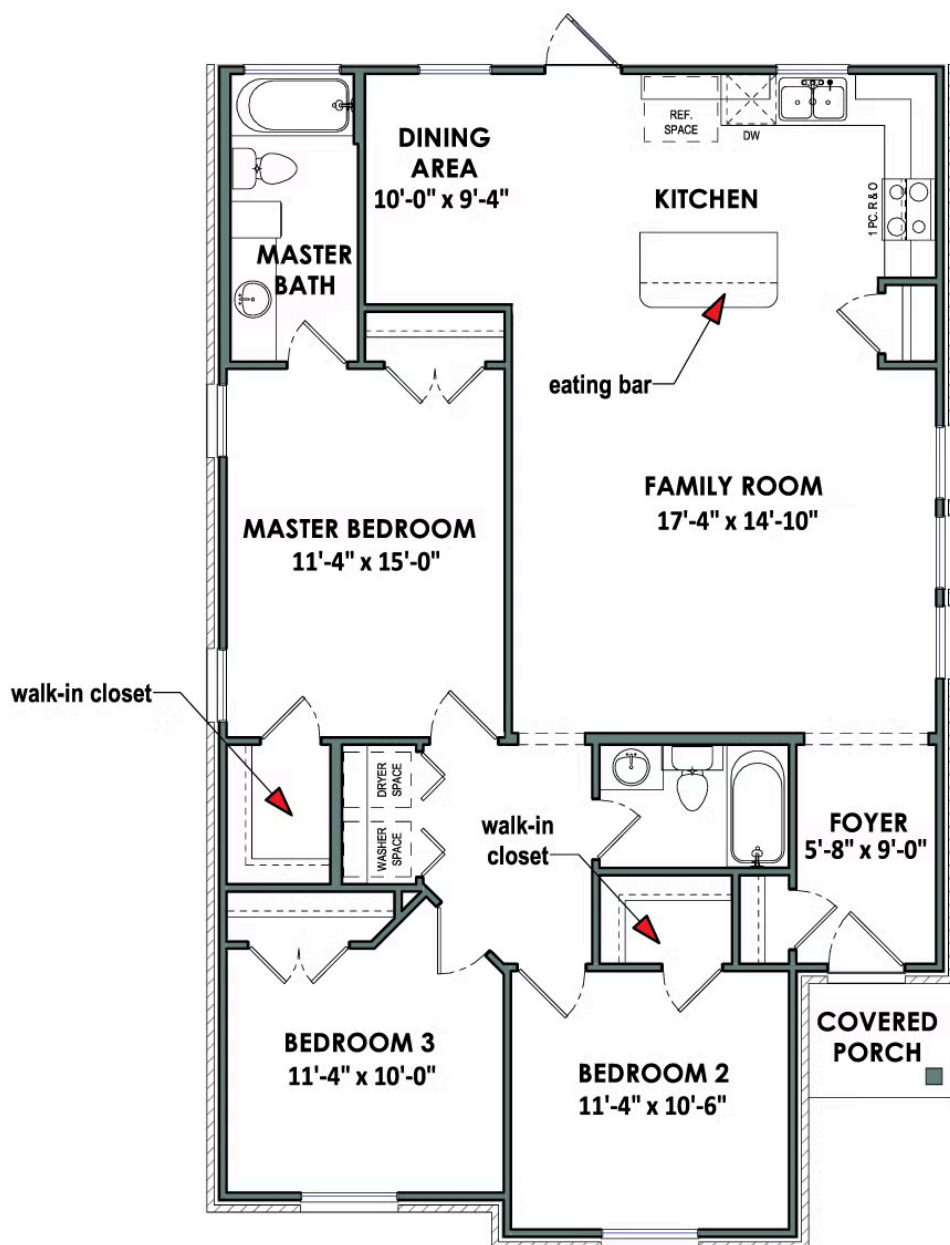
CONTACT US None

WWW.TILSONHOMES.COM



*Tilson continuously improves home designs and reserves the right to modify home features and specifications without notice or obligation. Square footage is approximate and includes overall dimensions. Renderings are drawn to be substantially correct. Tilson standard features may vary by home design and/or location. Contact a Tilson Sales Associate for details.
Current information as Jan. 5, 2026, 9:52 a.m.*

Floorplan - The San Felipe



CONTACT US None

WWW.TILSONHOMES.COM



*Tilson continuously improves home designs and reserves the right to modify home features and specifications without notice or obligation. Square footage is approximate and includes overall dimensions. Renderings are drawn to be substantially correct. Tilson standard features may vary by home design and/or location. Contact a Tilson Sales Associate for details.
Current information as Jan. 5, 2026, 9:52 a.m.*