



FROM \$281,000



1,647

Sq.Ft.



3

Bedrooms



2.0

Bathrooms



1.0

Story

The front entrance of the Refugio leads into a completely open space that includes the family room, kitchen, and dining area. The kitchen features an island with an eating bar and a walk-in pantry and is adjacent to the utility room. A short hallway from one side of the family room leads to the master suite with two walk-in closets in the bathroom. Two bedrooms and a full bathroom branch off from the opposite side of the family room to complete the split bedroom home design. Various customization options, like an attached garage, are available to make this home truly yours.

CONTACT US None

WWW.TILSONHOMES.COM



Tilson continuously improves home designs and reserves the right to modify home features and specifications without notice or obligation. Square footage is approximate and includes overall dimensions. Renderings are drawn to be substantially correct. Tilson standard features may vary by home design and/or location. Contact a Tilson Sales Associate for details. Current information as June 10, 2026, 1:56 p.m.

REFUGIO

Lamar County, TX

TILSON
CUSTOM HOME BUILDERS



Elevation A - The Refugio



Elevation B - The Refugio



Elevation C - The Refugio



Elevation D - The Refugio

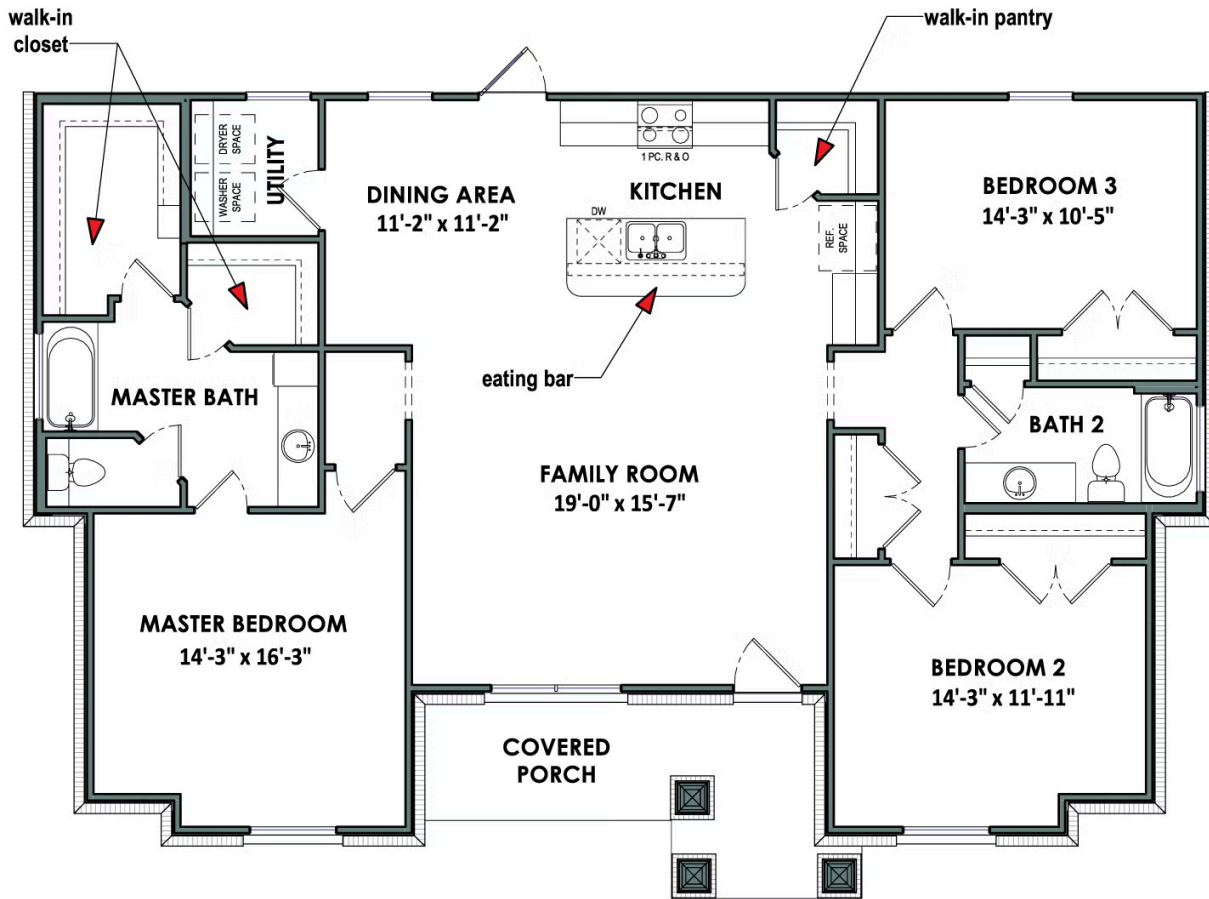
CONTACT US None

WWW.TILSONHOMES.COM



*Tilson continuously improves home designs and reserves the right to modify home features and specifications without notice or obligation. Square footage is approximate and includes overall dimensions. Renderings are drawn to be substantially correct. Tilson standard features may vary by home design and/or location. Contact a Tilson Sales Associate for details.
Current information as June 10, 2026, 1:56 p.m.*

Floorplan - The Refugio



CONTACT US None

WWW.TILSONHOMES.COM

