



## FROM \$279,000



**1,533**

Sq.Ft.



**3**

Bedrooms



**2.0**

Bathrooms



**1.0**

Story

The Nacogdoches offers a thoughtfully designed layout, with living quarters on the left and a gathering space on the right. From the covered porch, you step into a welcoming foyer that opens into a spacious family room, dining area, and kitchen. The adjacent utility room is tucked away for added privacy. The kitchen features a corner walk-in pantry and a sink island with an eating bar that overlooks the family room, creating a perfect space for connecting with loved ones. To the left of the foyer, a hallway leads to the living quarters, which include two bedrooms, a full bathroom, and a master suite complete with a large walk-in closet.

**CONTACT US** None

**WWW.TILSONHOMES.COM**



*Tilson continuously improves home designs and reserves the right to modify home features and specifications without notice or obligation. Square footage is approximate and includes overall dimensions. Renderings are drawn to be substantially correct. Tilson standard features may vary by home design and/or location. Contact a Tilson Sales Associate for details.  
Current information as Oct. 6, 2025, 12:01 p.m.*



Elevation A - The Nacogdoches



Elevation B - The Nacogdoches



Elevation C - The Nacogdoches



Elevation D - The Nacogdoches

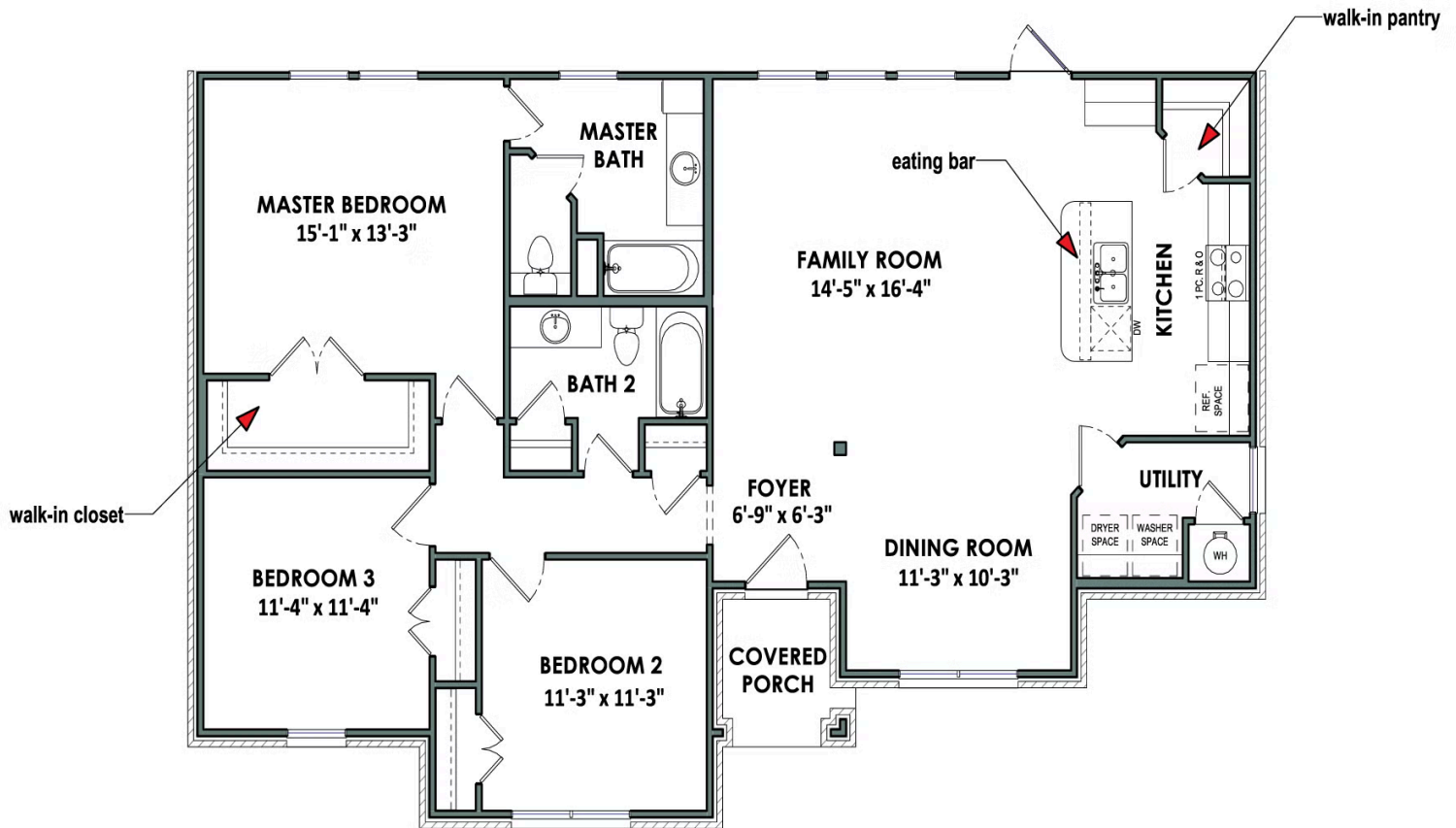
**CONTACT US** None

**WWW.TILSONHOMES.COM**



*Tilson continuously improves home designs and reserves the right to modify home features and specifications without notice or obligation. Square footage is approximate and includes overall dimensions. Renderings are drawn to be substantially correct. Tilson standard features may vary by home design and/or location. Contact a Tilson Sales Associate for details.  
Current information as Oct. 6, 2025, 12:01 p.m.*

## Floorplan - The Nacogdoches



**CONTACT US** None

**WWW.TILSONHOMES.COM**

