



FROM \$319,500



1,770

Sq.Ft.



3

Bedrooms



2.0

Bathrooms



1.0

Story

The Marian is designed around a spacious, light-filled family room featuring raised ceilings and tall windows that welcome abundant natural light. This central space connects to a dining room near the entrance and the kitchen with a breakfast area at the rear. The kitchen includes an open counter and eating bar that overlooks the family room, and leads into a secluded utility room. Two bedrooms and a bathroom branch off from the breakfast area, while the master suite, complete with a large walk-in closet, is located adjacent to the family room. Opposite the dining room, the study provides an ideal space for a quiet office or a fourth bedroom.

CONTACT US None

WWW.TILSONHOMES.COM



Tilson continuously improves home designs and reserves the right to modify home features and specifications without notice or obligation. Square footage is approximate and includes overall dimensions. Renderings are drawn to be substantially correct. Tilson standard features may vary by home design and/or location. Contact a Tilson Sales Associate for details. Current information as Jan. 5, 2026, 9:52 a.m.



Elevation C - The Marian

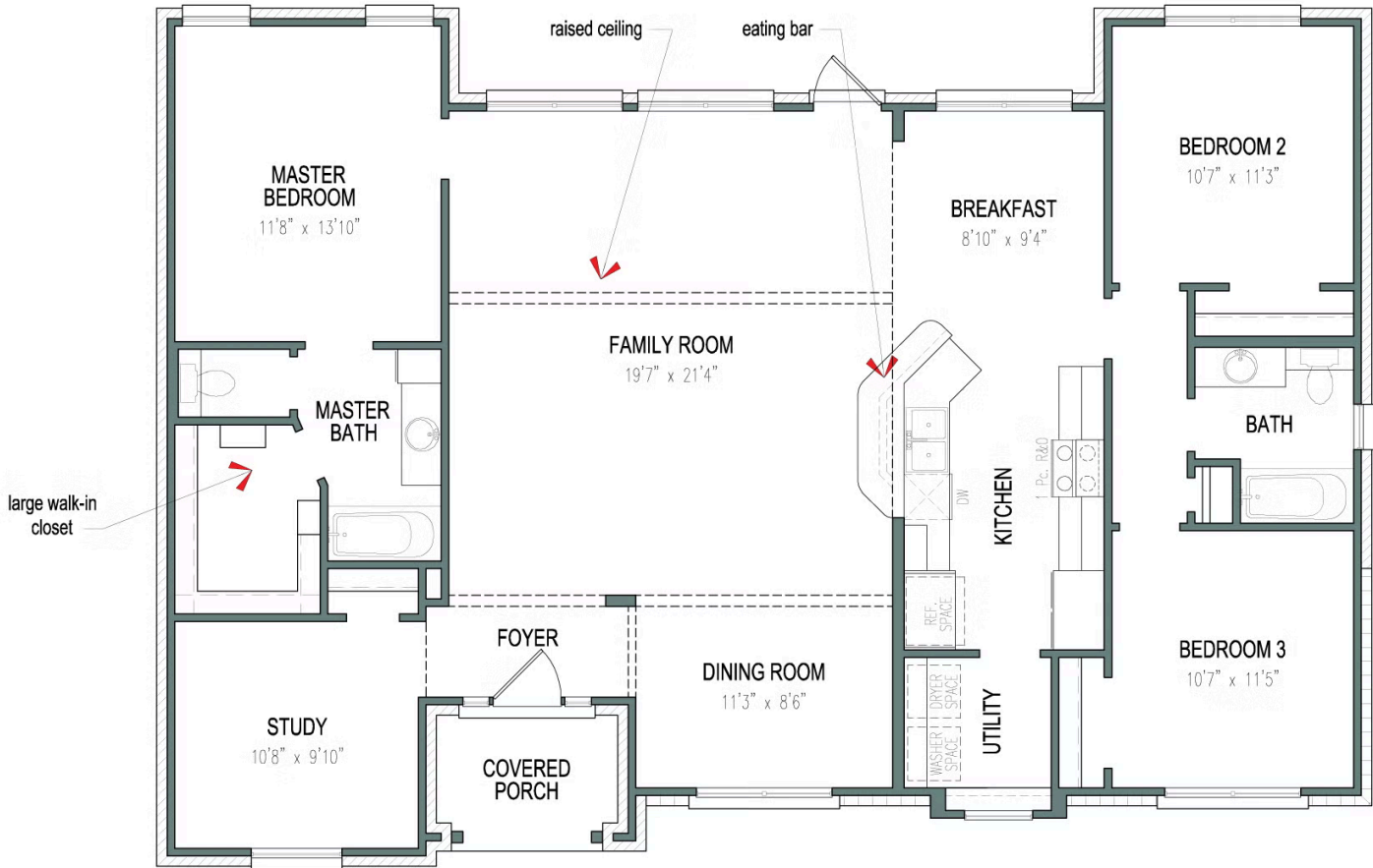
CONTACT US None

WWW.TILSONHOMES.COM



*Tilson continuously improves home designs and reserves the right to modify home features and specifications without notice or obligation. Square footage is approximate and includes overall dimensions. Renderings are drawn to be substantially correct. Tilson standard features may vary by home design and/or location. Contact a Tilson Sales Associate for details.
Current information as Jan. 5, 2026, 9:52 a.m.*

Floorplan - The Marian



CONTACT US None

WWW.TILSONHOMES.COM

