



FROM \$479,300



2,759

Sq.Ft.



4

Bedrooms



3.0

Bathrooms

The Woodland floor plan is a spacious, well-designed layout featuring four bedrooms and three bathrooms. The foyer leads into an open family room, seamlessly connected to the kitchen and dining area, which includes a large eating bar and a walk-in pantry. A study provides a dedicated workspace. The master bedroom boasts a raised ceiling, a large walk-in closet, an attached bathroom with dual vanities, and an oversized ceramic tile shower with a seat. Well-placed bedrooms and baths ensure comfort and convenience, creating a functional and inviting home.

CONTACT US None

WWW.TILSONHOMES.COM



*Tilson continuously improves home designs and reserves the right to modify home features and specifications without notice or obligation. Square footage is approximate and includes overall dimensions. Renderings are drawn to be substantially correct. Tilson standard features may vary by home design and/or location. Contact a Tilson Sales Associate for details.
Current information as Jan. 5, 2026, 9:49 a.m.*



Elevation A | The Woodland



Elevation B | The Woodland



Elevation C | The Woodland



Elevation D | The Woodland



Elevation E | The Woodland

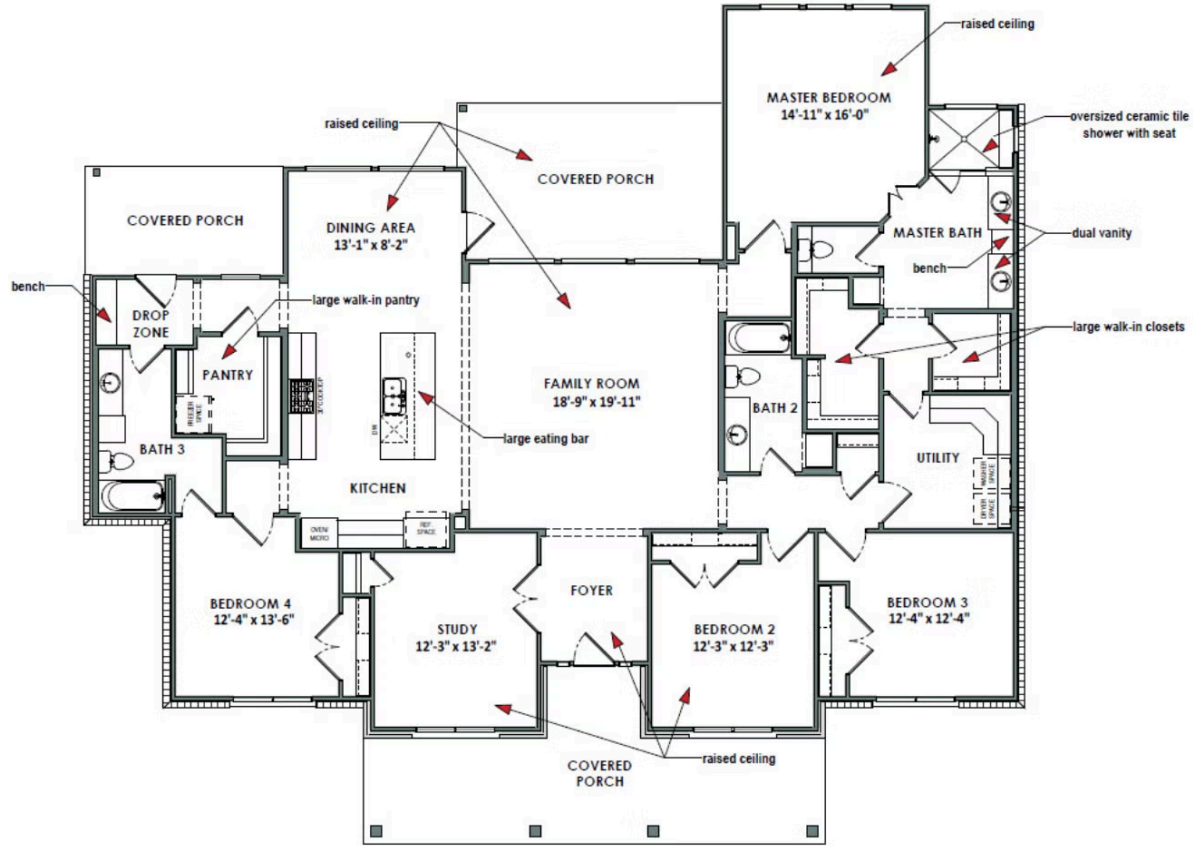
CONTACT US None

WWW.TILSONHOMES.COM



Tilson continuously improves home designs and reserves the right to modify home features and specifications without notice or obligation. Square footage is approximate and includes overall dimensions. Renderings are drawn to be substantially correct. Tilson standard features may vary by home design and/or location. Contact a Tilson Sales Associate for details. Current information as Jan. 5, 2026, 9:49 a.m.

Floor Plan - Elevation D | The Woodland



CONTACT US None

WWW.TILSONHOMES.COM

