

**FROM \$182,600****793**

Sq.Ft.

**1**

Bedrooms

**1.0**

Bathrooms

The Casita is a versatile, detached living space designed to offer both comfort and functionality. Featuring a charming covered front porch, it provides a private and relaxing retreat for its occupants. Inside, the master bedroom boasts a full bathroom complete with an oversized ceramic tile shower and a spacious walk-in closet, ensuring both luxury and convenience. The family room seamlessly connects to the kitchenette area, creating an open layout perfect for unwinding or hosting gatherings. Additionally, a walk-in pantry offers ample storage to keep everything organized. Whether used as a guest space, a mother-in-law suite, a pool house, or even a home office, The Casita adapts effortlessly to meet a variety of needs, making it a truly valuable addition to any property.

CONTACT US None**WWW.TILSONHOMES.COM**

*Tilson continuously improves home designs and reserves the right to modify home features and specifications without notice or obligation. Square footage is approximate and includes overall dimensions. Renderings are drawn to be substantially correct. Tilson standard features may vary by home design and/or location. Contact a Tilson Sales Associate for details.
Current information as Jan. 6, 2026, 10:38 a.m.*



Elevation A | The Casita



Elevation B | The Casita



Elevation C | The Casita



Elevation D | The Casita

CONTACT US None

WWW.TILSONHOMES.COM

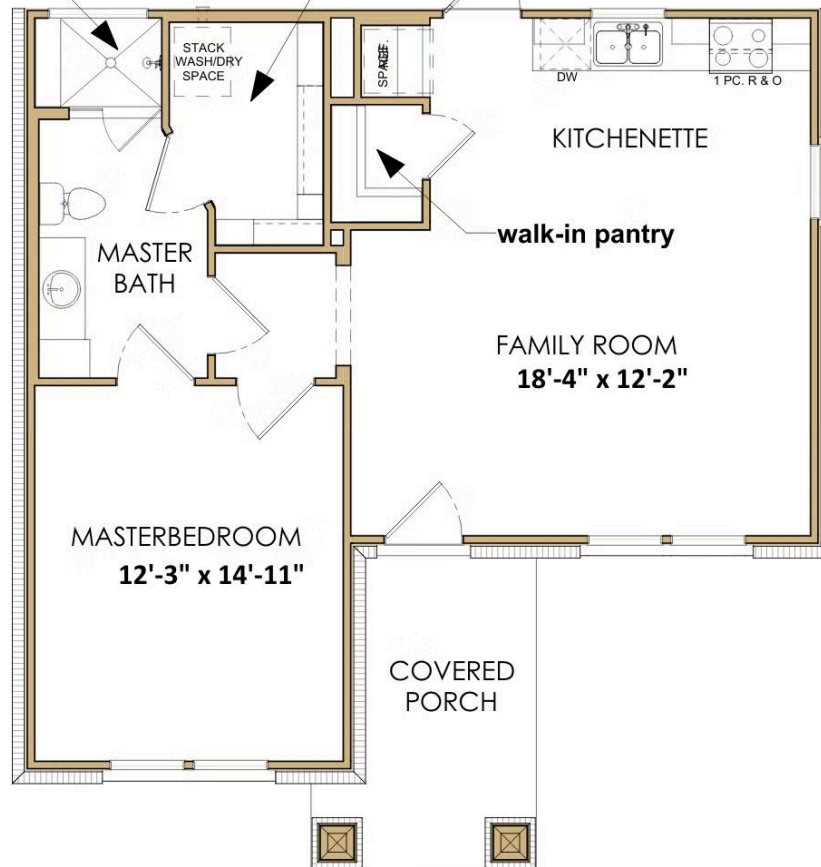


*Tilson continuously improves home designs and reserves the right to modify home features and specifications without notice or obligation. Square footage is approximate and includes overall dimensions. Renderings are drawn to be substantially correct. Tilson standard features may vary by home design and/or location. Contact a Tilson Sales Associate for details.
Current information as Jan. 6, 2026, 10:38 a.m.*

Casita B | Floorplan

oversized ceramic tile
shower with seat

walk-in closet



CONTACT US None

WWW.TILSONHOMES.COM



Tilson continuously improves home designs and reserves the right to modify home features and specifications without notice or obligation. Square footage is approximate and includes overall dimensions. Renderings are drawn to be substantially correct. Tilson standard features may vary by home design and/or location. Contact a Tilson Sales Associate for details.
Current information as Jan. 6, 2026, 10:38 a.m.