



FROM \$365,100



1,832

Sq.Ft.



3

Bedrooms



2.0

Bathrooms



1.0

Story

The Guadalupe is centered on a large family room that opens into a long covered porch at the rear of the home. The kitchen and dining area are situated at the front of the layout, featuring an open counter and eating bar that overlooks the family room. An open foyer at the front entrance connects to a sizable flex room, which can be used for entertaining or converted into an additional bedroom. The master suite on the left side of the home features a soaking tub, walk-in shower, and spacious walk-in closet.

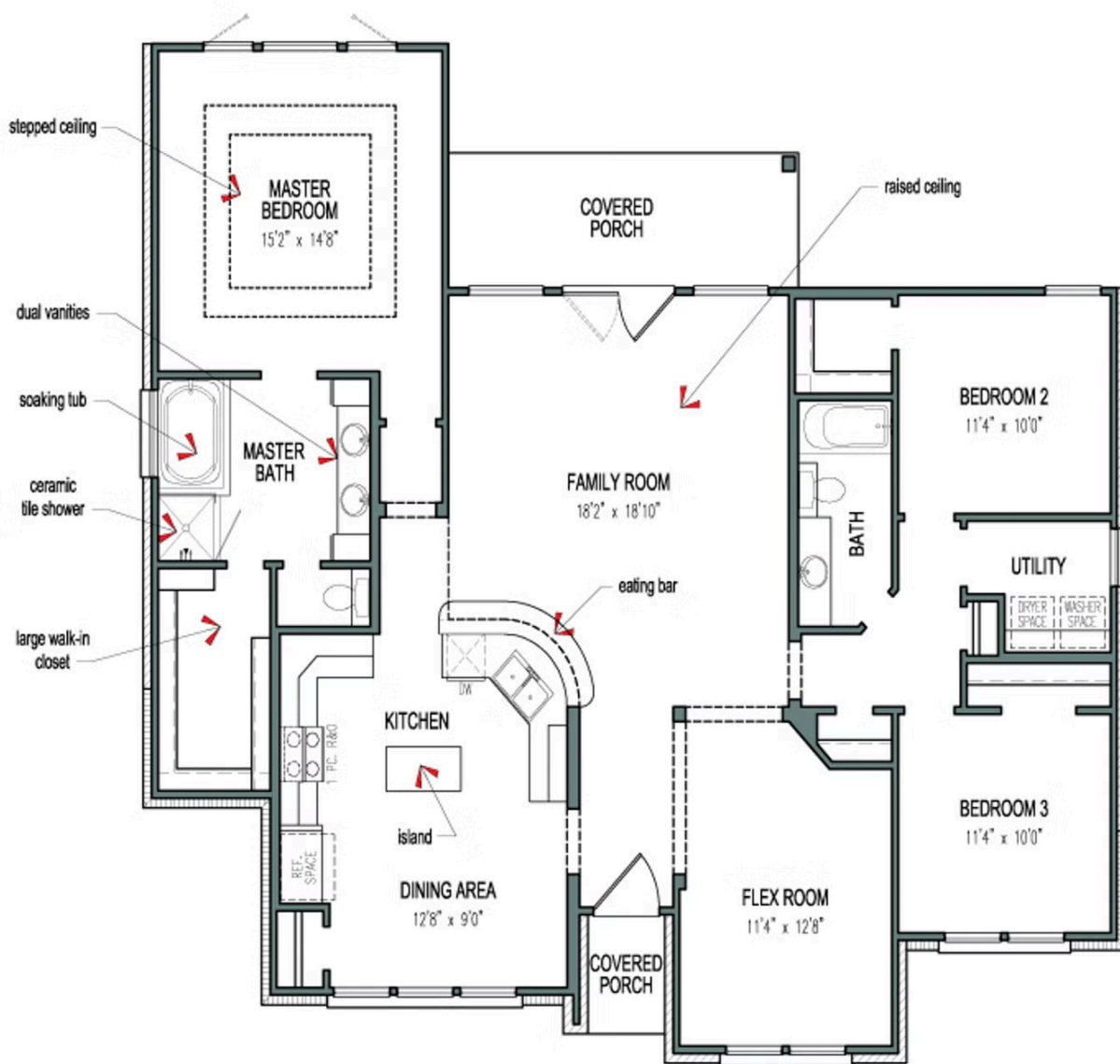
CONTACT US None

WWW.TILSONHOMES.COM



*Tilson continuously improves home designs and reserves the right to modify home features and specifications without notice or obligation. Square footage is approximate and includes overall dimensions. Renderings are drawn to be substantially correct. Tilson standard features may vary by home design and/or location. Contact a Tilson Sales Associate for details.
Current information as Jan. 5, 2026, 9:41 a.m.*

Floorplan - The Guadalupe



CONTACT US None

WWW.TILSONHOMES.COM

