



FROM \$509,800



2,135

Sq.Ft.



3

Bedrooms



2.5

Bathrooms



3

Garage

The Ranger is a beautiful barndominium-style home that boasts a spacious and well-thought-out floor plan. With three bedrooms, each equipped with their own walk-in closet, this home is perfect for large families or those who frequently entertain guests. This split floor plan provides maximum privacy and comfort, with each room having easy access to one of the two-and-a-half bathrooms. The family room and dining area feature stunning rough sawn wood beams. The kitchen is well-equipped with a spacious walk-in pantry, allowing ample storage space for all your cooking essentials. The attached 3 car garage has raised ceilings, ensuring that all your vehicles and equipment fit comfortably.

CONTACT US None

WWW.TILSONHOMES.COM



*Tilson continuously improves home designs and reserves the right to modify home features and specifications without notice or obligation. Square footage is approximate and includes overall dimensions. Renderings are drawn to be substantially correct. Tilson standard features may vary by home design and/or location. Contact a Tilson Sales Associate for details.
Current information as Jan. 5, 2026, 9:37 a.m.*

RANGER

Freestone County, TX

TILSON
CUSTOM HOME BUILDERS



Front Exterior - Ranger A |
Rendered Home - May Contain
Upgraded Design Options



Front Exterior - Ranger B |
Rendered Home - May Contain
Upgraded Design Options

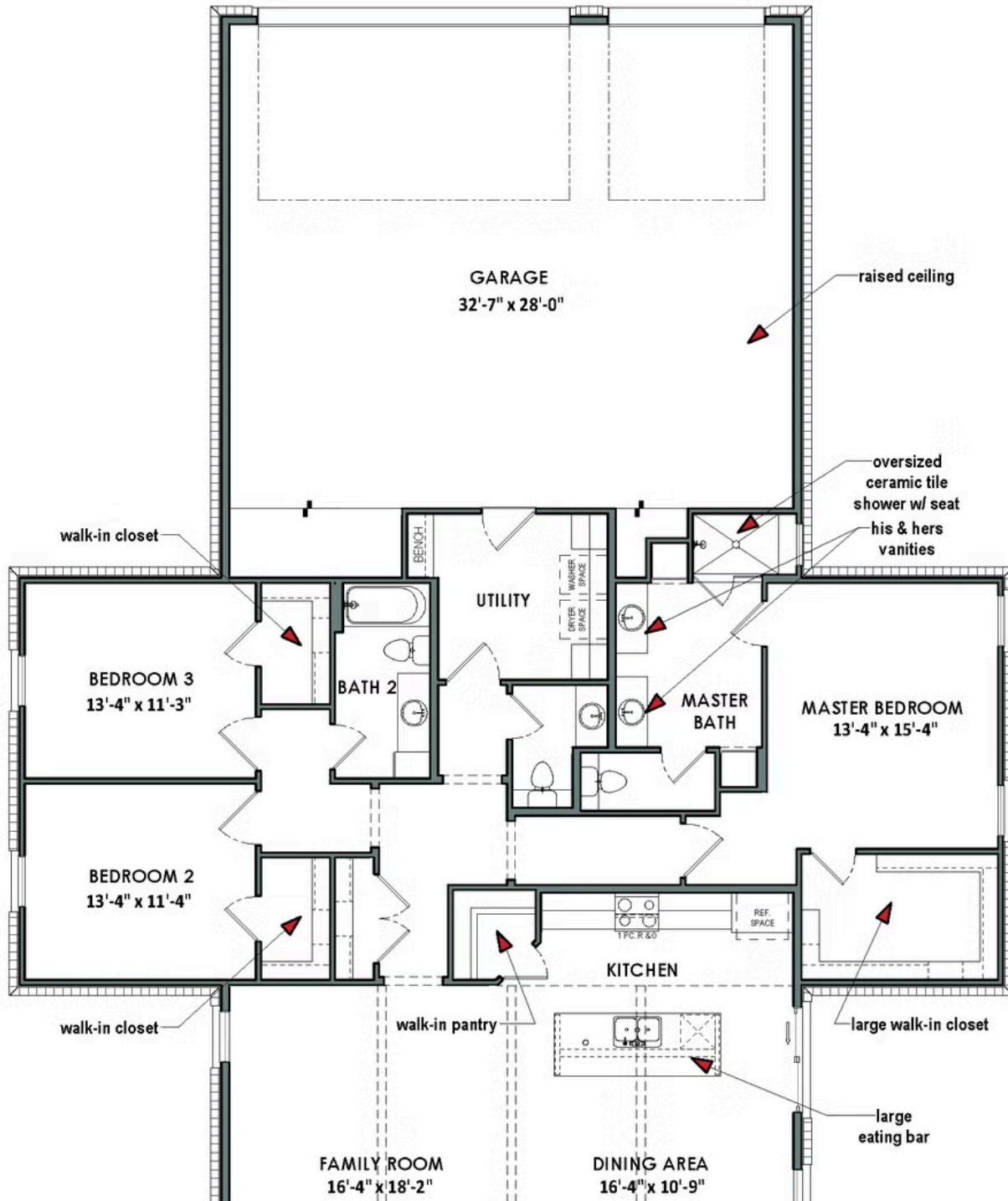
CONTACT US None

WWW.TILSONHOMES.COM



*Tilson continuously improves home designs and reserves the right to modify home features and specifications without notice or obligation. Square footage is approximate and includes overall dimensions. Renderings are drawn to be substantially correct. Tilson standard features may vary by home design and/or location. Contact a Tilson Sales Associate for details.
Current information as Jan. 5, 2026, 9:37 a.m.*

Floor Plan - Elevation A | The Ranger



CONTACT US None

WWW.TILSONHOMES.COM

cathedral ceiling

cathedral ceiling

COVERED PORCH

