



## FROM \$327,500



**1,993**

Sq.Ft.



**4**

Bedrooms



**2.0**

Bathrooms

Step into the Bexar and feel instantly at home. The open-concept family room effortlessly connects to the kitchen, creating a bright and welcoming space filled with natural light from the abundant windows. The master suite is your private retreat, complete with a spacious walk-in closet that feels like a dream. The thoughtful split bedroom layout offers just the right amount of privacy, while the kitchen shines with a handy island, built-in eating bar, and walk-in pantry. This floorplan is designed with care, offering plenty of room for everyone to live, relax, and enjoy.

**CONTACT US** None

**WWW.TILSONHOMES.COM**



*Tilson continuously improves home designs and reserves the right to modify home features and specifications without notice or obligation. Square footage is approximate and includes overall dimensions. Renderings are drawn to be substantially correct. Tilson standard features may vary by home design and/or location. Contact a Tilson Sales Associate for details. Current information as July 7, 2026, 11:14 a.m.*



Elevation A | The Bexar



Elevation B | The Bexar



Elevation C | The Bexar



Elevation D | The Bexar

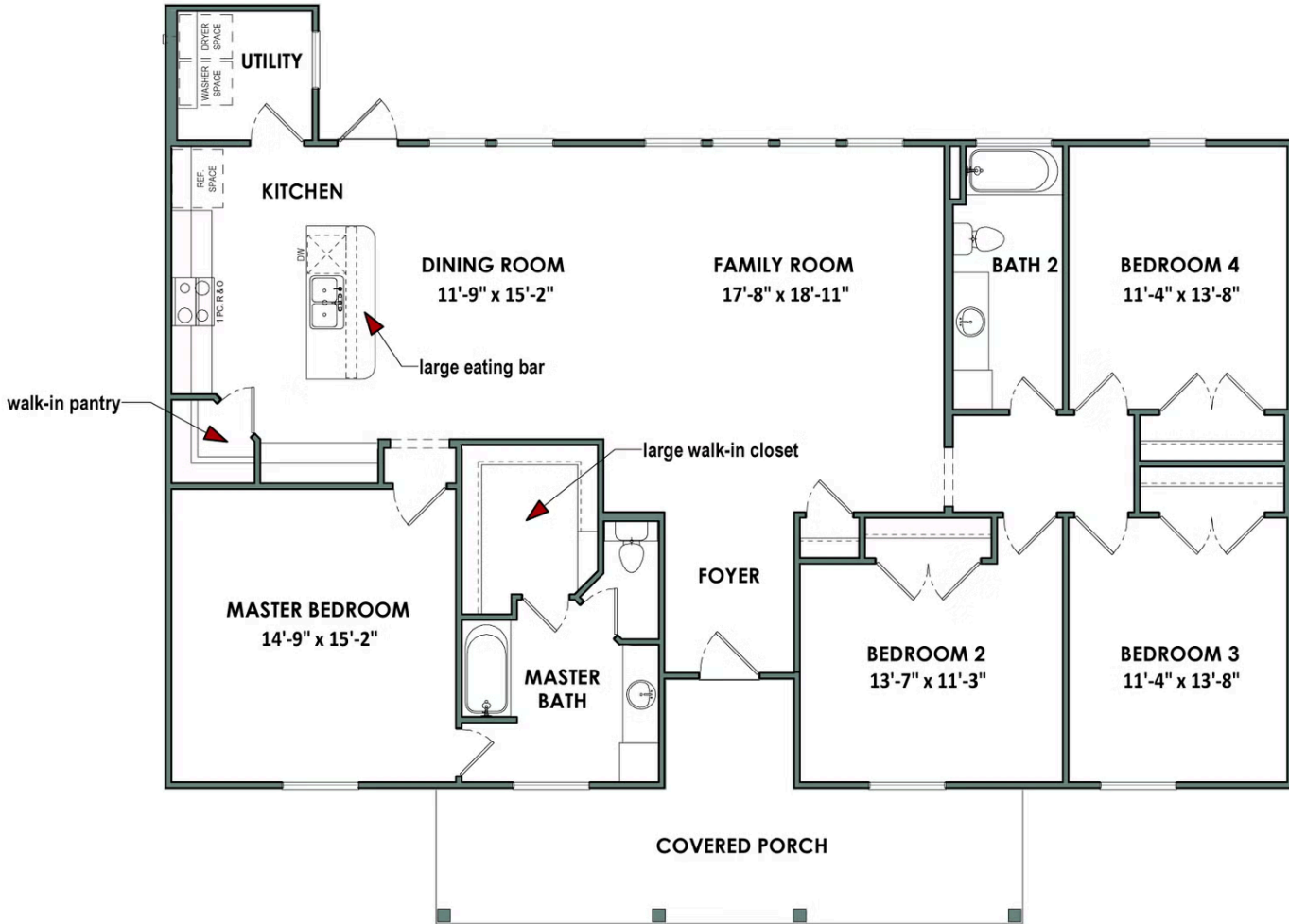
**CONTACT US** None

**WWW.TILSONHOMES.COM**



*Tilson continuously improves home designs and reserves the right to modify home features and specifications without notice or obligation. Square footage is approximate and includes overall dimensions. Renderings are drawn to be substantially correct. Tilson standard features may vary by home design and/or location. Contact a Tilson Sales Associate for details. Current information as July 7, 2026, 11:14 a.m.*

## Floor Plan | Elevation C | The Bexar



CONTACT US None

[WWW.TILSONHOMES.COM](http://WWW.TILSONHOMES.COM)

