

# LA PORTE

Milam County, TX

**TILSON**  
CUSTOM HOME BUILDERS



**FROM \$270,600**



**1,712**

Sq.Ft.



**3**

Bedrooms



**2.0**

Bathrooms



**1.0**

Story



**0**

Garage

At the entrance of the La Porte, a modest foyer opens into a dining area on the left, a coat closet on the right, and the family room ahead. The family room and kitchen are open to each other, with a wall of windows and an exterior door letting in plenty of light to brighten the space. The kitchen features a walk-in pantry, sink island with an eating bar, and a sizable breakfast corner. At the front end of the family room, a hallway branches off into a utility room, two bedrooms, and a full bathroom, while a master suite with a large walk-in closet sits at the rear.

**CONTACT US**

**WWW.TILSONHOMES.COM**



*Tilson continuously improves home designs and reserves the right to modify home features and specifications without notice or obligation. Square footage is approximate and includes overall dimensions. Renderings are drawn to be substantially correct. Tilson standard features may vary by home design and/or location. Contact a Tilson Sales Associate for details. Current information as June 7, 2023, 9:39 a.m.*

# LA PORTE

Milam County, TX

**TILSON**  
CUSTOM HOME BUILDERS



Elevation C - La Porte



Elevation A - La Porte



Elevation B - La Porte



Elevation D - La Porte

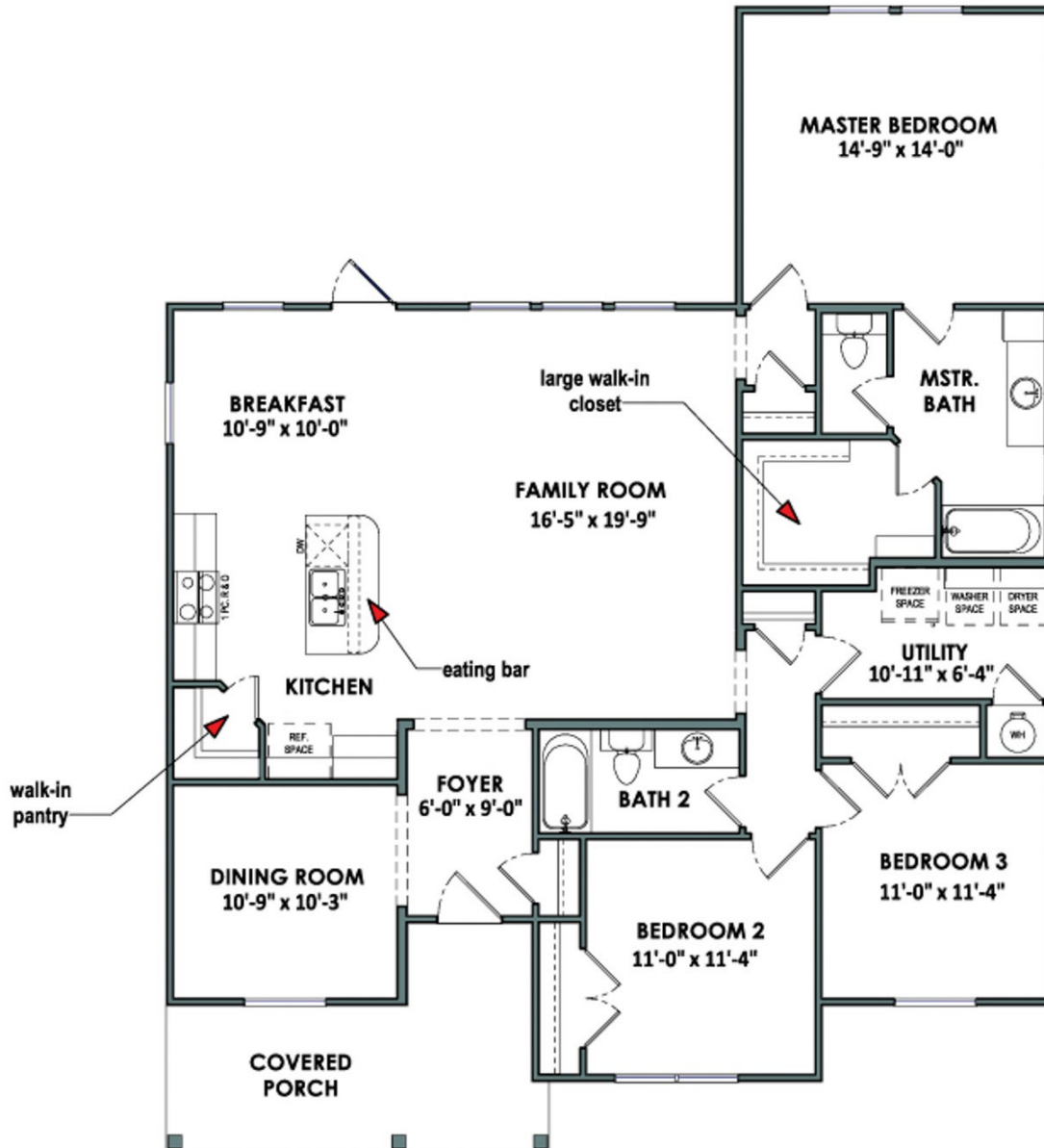
CONTACT US

[WWW.TILSONHOMES.COM](http://WWW.TILSONHOMES.COM)



*Tilson continuously improves home designs and reserves the right to modify home features and specifications without notice or obligation. Square footage is approximate and includes overall dimensions. Renderings are drawn to be substantially correct. Tilson standard features may vary by home design and/or location. Contact a Tilson Sales Associate for details. Current information as June 7, 2023, 9:39 a.m.*

## Floorplan - La Porte



CONTACT US

[WWW.TILSONHOMES.COM](http://WWW.TILSONHOMES.COM)

