

# LONE STAR

Washington County, TX

**TILSON**  
CUSTOM HOME BUILDERS



## FROM \$701,900



**3,349**

Sq.Ft.



**3**

Bedrooms



**3.5**

Bathrooms



**1.0**

Story



**2**

Garage

The Lone Star is designed for impressive entertaining! Entering the home through double front doors on the wide covered porch, you'll find yourself in a large welcoming foyer. There, you'll find a private study with a built-in bookcase on one side and a spacious family room ahead. The family room features a raised ceiling and leads to an oversized rear covered porch. The kitchen includes a walk-in pantry with additional freezer space, a large island for eating or preparing food, and attached dining area. The master suite boasts two walk-in closets, a grand bathroom with a soaking tub, his-and-hers vanities, and an oversized shower.

**CONTACT US**

**WWW.TILSONHOMES.COM**



*Tilson continuously improves home designs and reserves the right to modify home features and specifications without notice or obligation. Square footage is approximate and includes overall dimensions. Renderings are drawn to be substantially correct. Tilson standard features may vary by home design and/or location. Contact a Tilson Sales Associate for details. Current information as July 3, 2023, 9:21 a.m.*

# LONE STAR

Washington County, TX

**TILSON**  
CUSTOM HOME BUILDERS



Model Coming Soon | The Lone Star C



Elevation C | The Lone Star



Elevation B | The Lone Star

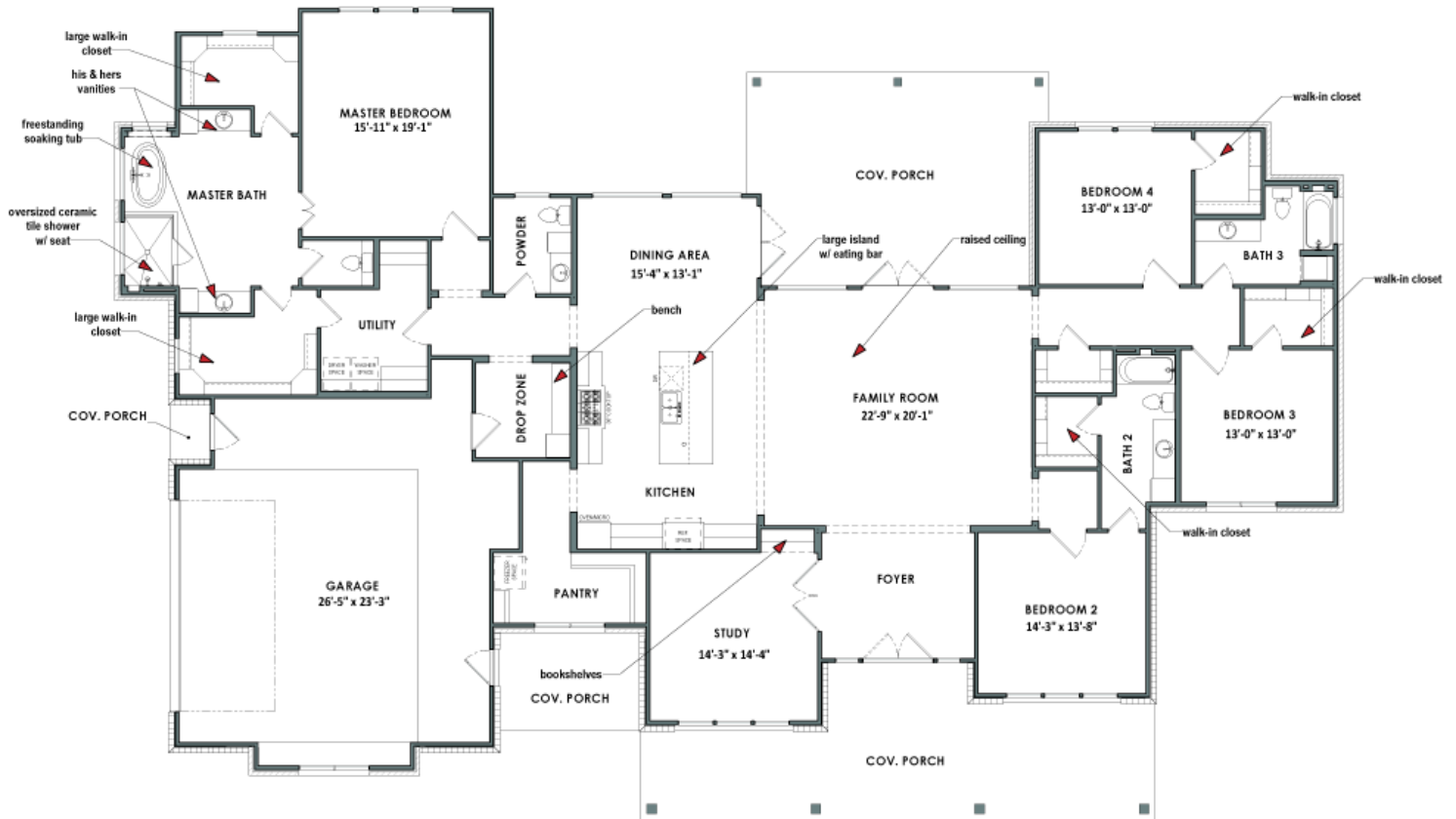
CONTACT US

[WWW.TILSONHOMES.COM](http://WWW.TILSONHOMES.COM)



*Tilson continuously improves home designs and reserves the right to modify home features and specifications without notice or obligation. Square footage is approximate and includes overall dimensions. Renderings are drawn to be substantially correct. Tilson standard features may vary by home design and/or location. Contact a Tilson Sales Associate for details. Current information as July 3, 2023, 9:21 a.m.*

## Floor Plan | Elevation C | The Lone Star



CONTACT US

[WWW.TILSONHOMES.COM](http://WWW.TILSONHOMES.COM)



*Tilson continuously improves home designs and reserves the right to modify home features and specifications without notice or obligation. Square footage is approximate and includes overall dimensions. Renderings are drawn to be substantially correct. Tilson standard features may vary by home design and/or location. Contact a Tilson Sales Associate for details. Current information as July 3, 2023, 9:21 a.m.*