



FROM \$474,800



2,710

Sq.Ft.



4

Bedrooms



2.5

Bathrooms

You're sure to love the space and versatility offered by the Sonora. One side of this home features a spacious master suite with two large walk-in closets, an oversized shower, and separate vanities. A hallway connects to the living quarters on the opposite side, including three bedrooms and a full bathroom. Adjoining the two sides is the kitchen with an attached dining area and spacious walk-in pantry, along with a large adjacent family room that looks out onto a large covered porch at the rear of the home. At the front of the home are a large private study and a wide-covered front porch.

CONTACT US

WWW.TILSONHOMES.COM

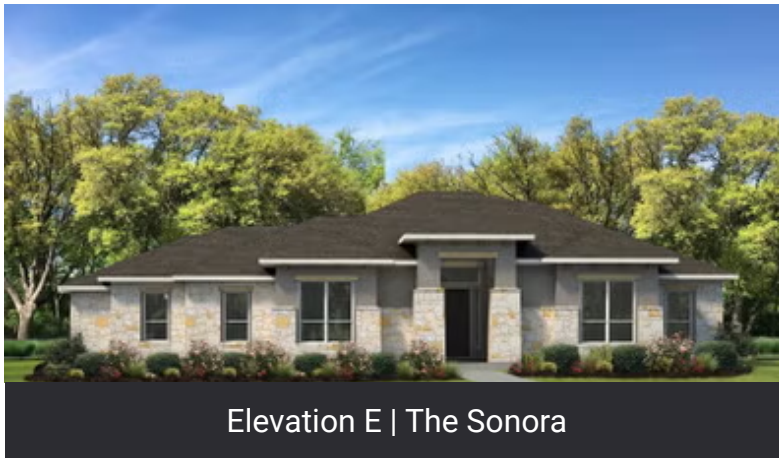


*Tilson continuously improves home designs and reserves the right to modify home features and specifications without notice or obligation. Square footage is approximate and includes overall dimensions. Renderings are drawn to be substantially correct. Tilson standard features may vary by home design and/or location. Contact a Tilson Sales Associate for details.
Current information as April 7, 2025, 10:37 a.m.*

SONORA

Bandera County, TX

TILSON
CUSTOM HOME BUILDERS



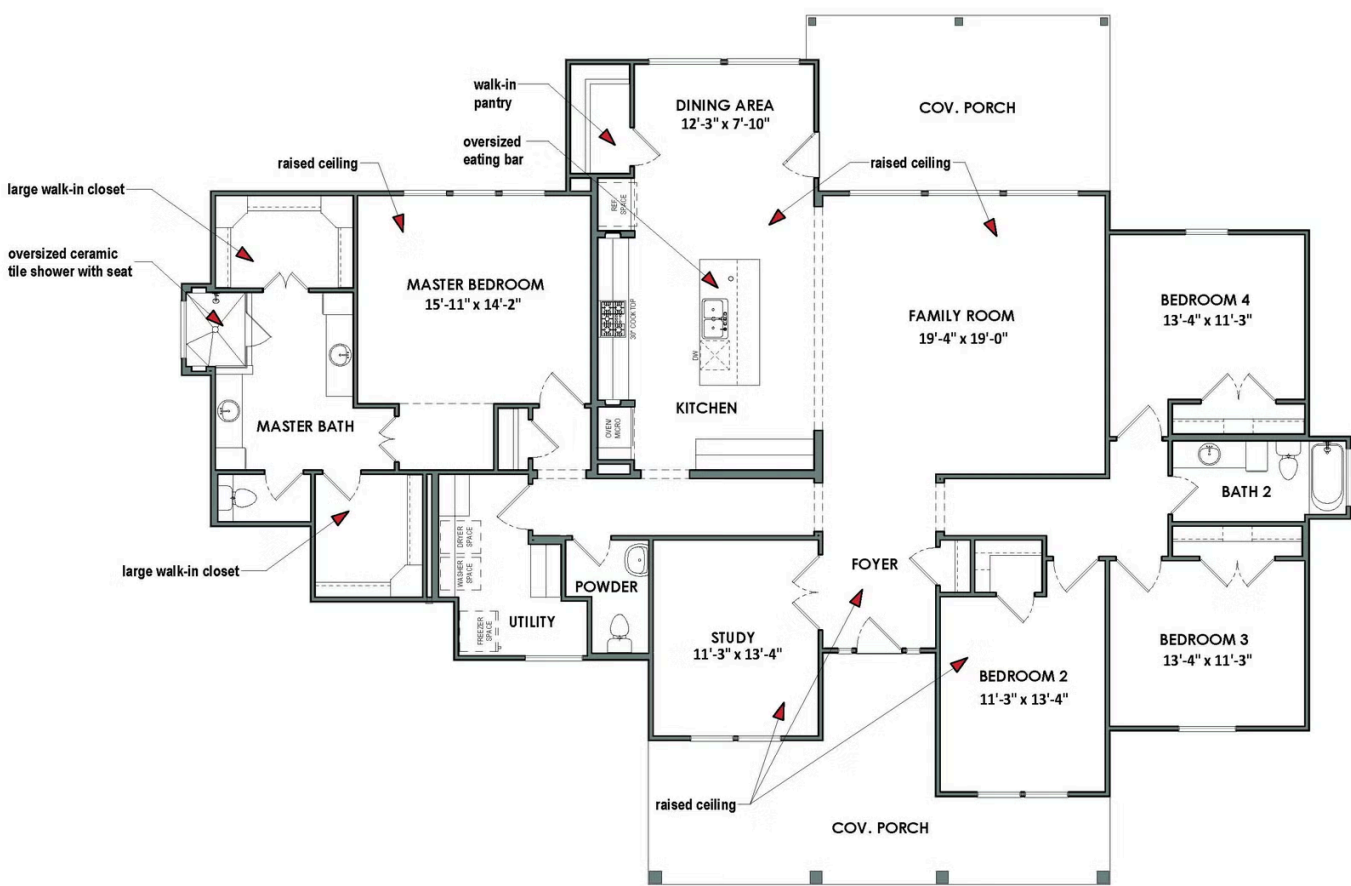
CONTACT US

WWW.TILSONHOMES.COM



Tilson continuously improves home designs and reserves the right to modify home features and specifications without notice or obligation. Square footage is approximate and includes overall dimensions. Renderings are drawn to be substantially correct. Tilson standard features may vary by home design and/or location. Contact a Tilson Sales Associate for details. Current information as April 7, 2025, 10:37 a.m.

Floorplan | Elevation C | The Sonora



CONTACT US

WWW.TILSONHOMES.COM



Tilson continuously improves home designs and reserves the right to modify home features and specifications without notice or obligation. Square footage is approximate and includes overall dimensions. Renderings are drawn to be substantially correct. Tilson standard features may vary by home design and/or location. Contact a Tilson Sales Associate for details. Current information as April 7, 2025, 10:37 a.m.