

FAYETTEVILLE

Bandera County, TX

TILSON
CUSTOM HOME BUILDERS



FROM \$419,600



2,399

Sq.Ft.



4

Bedrooms



2.5

Bathrooms



1.0

Story



0

Garage

The Fayetteville is the perfect home design for large families. Entering through the foyer at the front of the house, the space opens up into the family room and dining area. Connecting these two rooms is a sizable kitchen with an island, walk-in pantry, and butler's pantry. A secluded powder room and utility room completes the right side of the home. The other side of the home acts as the living area. Toward the rear is a large master suite complete with a vast walk-in closet, oversize shower, soaking tub, and double sinks. Toward the front are three bedrooms with walk-in closets clustered around a central hub, with a full bathroom and deep separate closet space. Shown in the photos is our model home located in Waxahachie, TX. The model features options including an attached garage and an upstairs bonus room.

CONTACT US

WWW.TILSONHOMES.COM



Tilson continuously improves home designs and reserves the right to modify home features and specifications without notice or obligation. Square footage is approximate and includes overall dimensions. Renderings are drawn to be substantially correct. Tilson standard features may vary by home design and/or location. Contact a Tilson Sales Associate for details. Current information as Jan. 18, 2024, 2:12 p.m.

FAYETTEVILLE

Bandera County, TX

TILSON
CUSTOM HOME BUILDERS



Elevation A - The Fayetteville



Elevation B - The Fayetteville



Elevation C - The Fayetteville



Elevation D - The Fayetteville

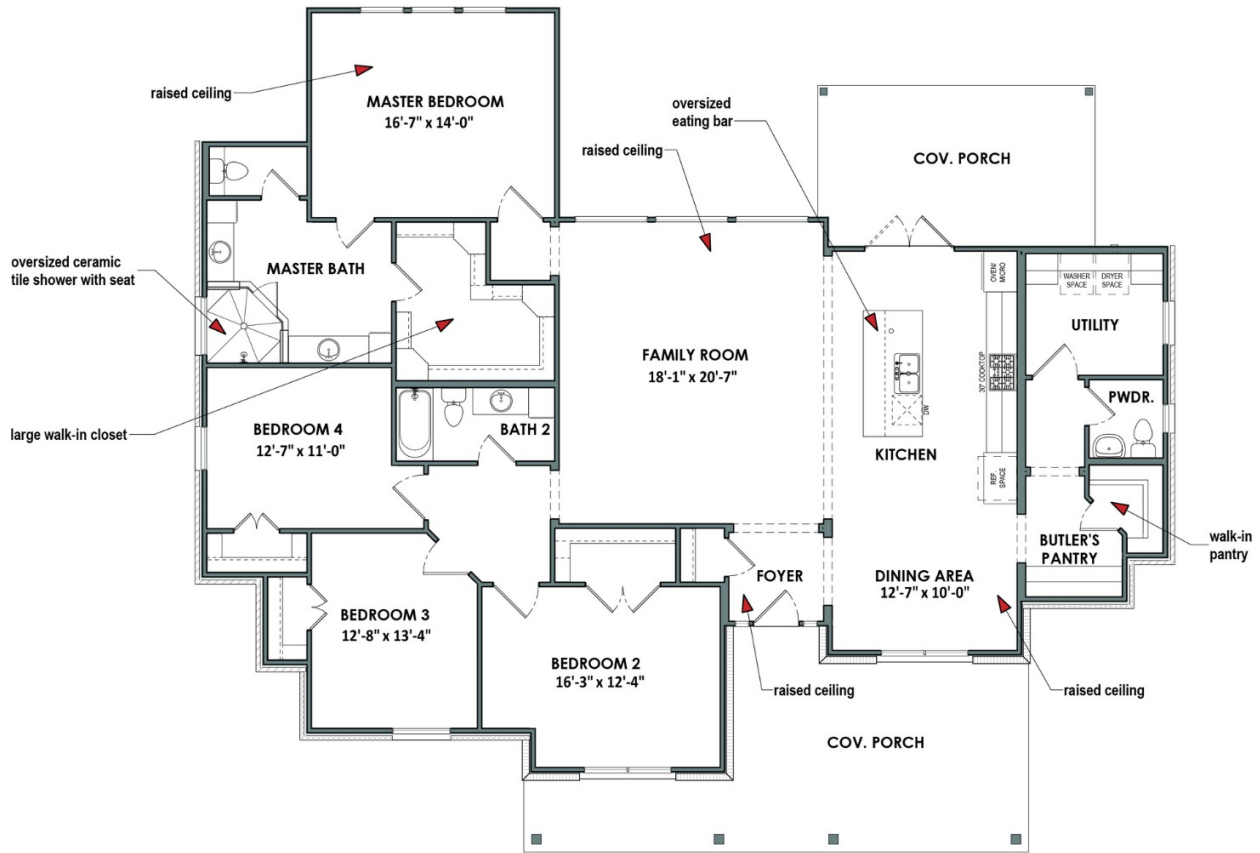
CONTACT US

WWW.TILSONHOMES.COM



Tilson continuously improves home designs and reserves the right to modify home features and specifications without notice or obligation. Square footage is approximate and includes overall dimensions. Renderings are drawn to be substantially correct. Tilson standard features may vary by home design and/or location. Contact a Tilson Sales Associate for details. Current information as Jan. 18, 2024, 2:12 p.m.

Floor Plan | Elevation D | The Fayetteville



CONTACT US

WWW.TILSONHOMES.COM



Tilson continuously improves home designs and reserves the right to modify home features and specifications without notice or obligation. Square footage is approximate and includes overall dimensions. Renderings are drawn to be substantially correct. Tilson standard features may vary by home design and/or location. Contact a Tilson Sales Associate for details. Current information as Jan. 18, 2024, 2:12 p.m.