



## FROM \$462,900



**2,669**

Sq.Ft.



**3**

Bedrooms



**2.5**

Bathrooms



**1.0**

Story



**2**

Garage

Growing families will love the space and versatility offered by the Fredericksburg. The left side of this home features a utility room leading to the attached 2 car garage, a powder room, and a spacious master suite with a vast walk-in closet, oversize shower, and soaking tub. A hallway connects to the living quarters on the opposite side, including two bedrooms, a full bathroom, and desk space. Adjoining the two sides, the kitchen with attached breakfast nook and large adjacent family room are situated at the rear, while a study and foyer flowing into an open dining area greet you at the front entrance. Our model home in Katy includes the optional upstairs bonus and theater rooms, bringing its total square footage to 3,744.

**CONTACT US**

**WWW.TILSONHOMES.COM**



*Tilson continuously improves home designs and reserves the right to modify home features and specifications without notice or obligation. Square footage is approximate and includes overall dimensions. Renderings are drawn to be substantially correct. Tilson standard features may vary by home design and/or location. Contact a Tilson Sales Associate for details.*

*Current information as June 3, 2024, 9:47 a.m.*

# FREDERICKSBURG

Grimes County, TX

**TILSON**  
CUSTOM HOME BUILDERS



Elevation B - The Fredericksburg



Elevation C - The Fredericksburg

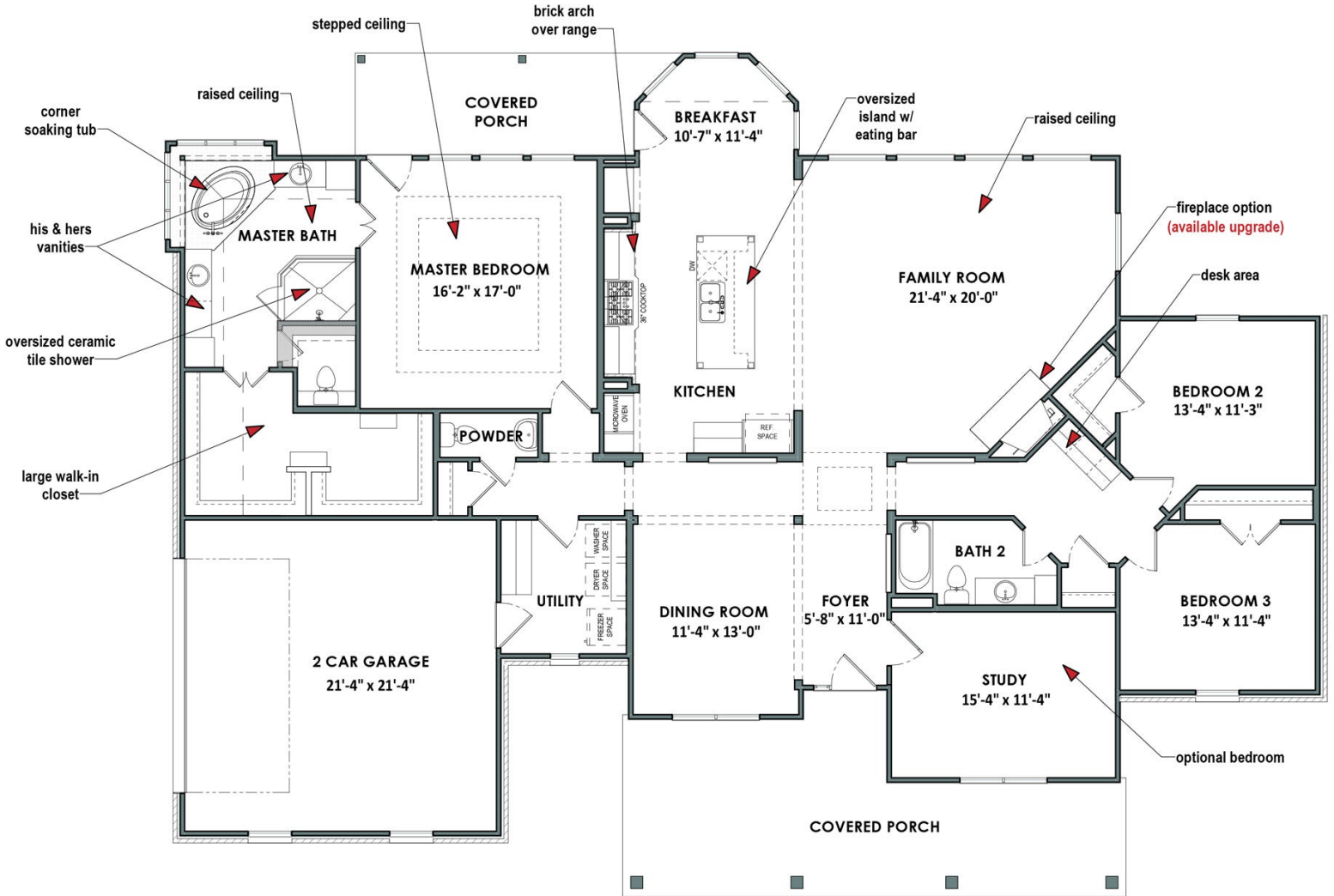
**CONTACT US**

**[WWW.TILSONHOMES.COM](http://WWW.TILSONHOMES.COM)**



*Tilson continuously improves home designs and reserves the right to modify home features and specifications without notice or obligation. Square footage is approximate and includes overall dimensions. Renderings are drawn to be substantially correct. Tilson standard features may vary by home design and/or location. Contact a Tilson Sales Associate for details.  
Current information as June 3, 2024, 9:47 a.m.*

## Floor Plan - The Fredericksburg



CONTACT US

WWW.TILSONHOMES.COM

