



2,329

Sq.Ft.



3

Bedrooms



2.5

Bathrooms



1.0

Story



2

Garage

Growing and active families will love the space and convenience of the Wimberley. Two separate bedrooms, a master suite, and a study that can be converted to a bedroom provide plenty of privacy.

The master includes two walk-in closets and a spacious bathroom with an additional entrance through the utility room. Wood beams and a cathedral ceiling sprawl over the open central gathering area, which includes a vast family room, dining room, and kitchen, with a large island and eating bar overlooking the space. An attached 2-car garage with an adjacent drop zone and powder room makes this layout ideal for families that love entertaining guests and hosting holidays.

WWW.TILSONHOMES.COM



*Tilson continuously improves home designs and reserves the right to modify home features and specifications without notice or obligation. Square footage is approximate and includes overall dimensions. Renderings are drawn to be substantially correct. Tilson standard features may vary by home design and/or location. Contact a Tilson Sales Associate for details.
Current information as Feb. 21, 2025, 10:55 a.m.*



The Wimberley

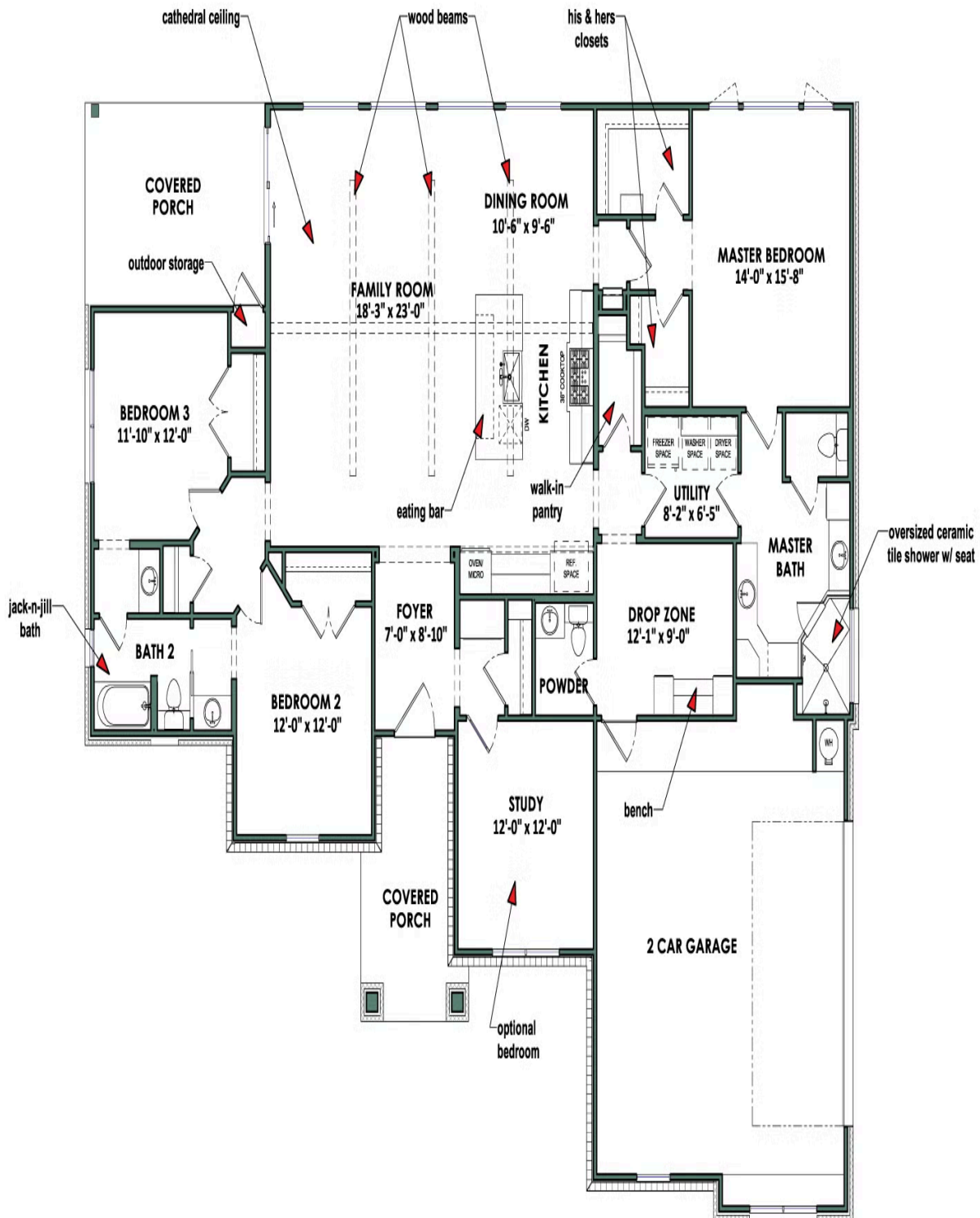
CONTACT US

WWW.TILSONHOMES.COM



*Tilson continuously improves home designs and reserves the right to modify home features and specifications without notice or obligation. Square footage is approximate and includes overall dimensions. Renderings are drawn to be substantially correct. Tilson standard features may vary by home design and/or location. Contact a Tilson Sales Associate for details.
Current information as Feb. 21, 2025, 10:55 a.m.*

Floorplan - The Wimberley



WWW.TILSONHOMES.COM



Tilson continuously improves home designs and reserves the right to modify home features and specifications without notice or obligation. Square footage is approximate and includes overall dimensions. Renderings are drawn to be substantially correct. Tilson standard features may vary by home design and/or location. Contact a Tilson Sales Associate for details. Current information as Feb. 21, 2025, 10:55 a.m.