



1,720
Sq.Ft.



3
Bedrooms



2.5
Bathrooms



2.0
Story

The Victoria is a spacious two-story home with private living quarters upstairs and an open loft to let natural light permeate the family room below. The family room is open to the dining area and kitchen, which features an open counter with an eating bar, a small center work island, and a walk-in pantry. Tucked into the corner of the kitchen and dining area is a small utility room, which can exit to the optional 2-car garage. The powder room near the entrance and master suite with a large walk-in closet completes the ground floor.

WWW.TILSONHOMES.COM



*Tilson continuously improves home designs and reserves the right to modify home features and specifications without notice or obligation. Square footage is approximate and includes overall dimensions. Renderings are drawn to be substantially correct. Tilson standard features may vary by home design and/or location. Contact a Tilson Sales Associate for details.
Current information as Feb. 20, 2025, 4:18 p.m.*



Elevation A - The Victoria



Elevation B - The Victoria



Elevation C - The Victoria



Elevation D - The Victoria



Elevation E - The Victoria

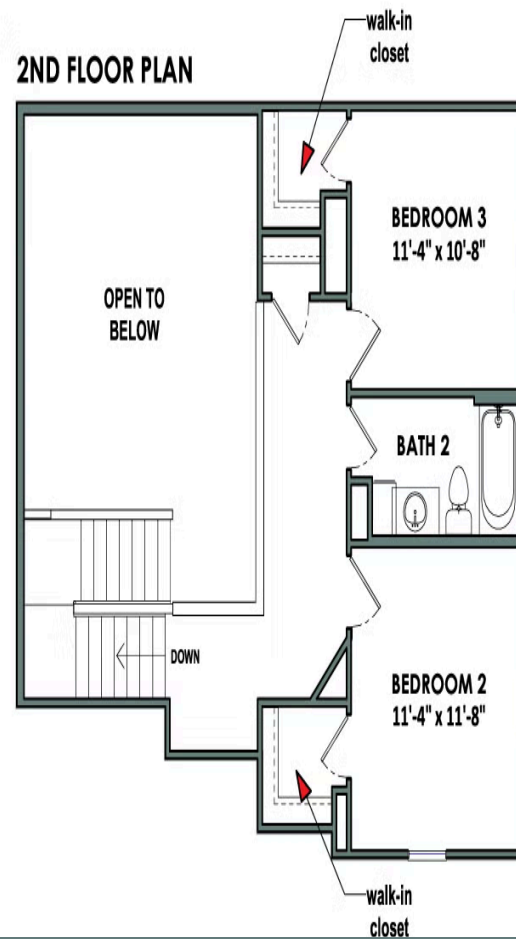
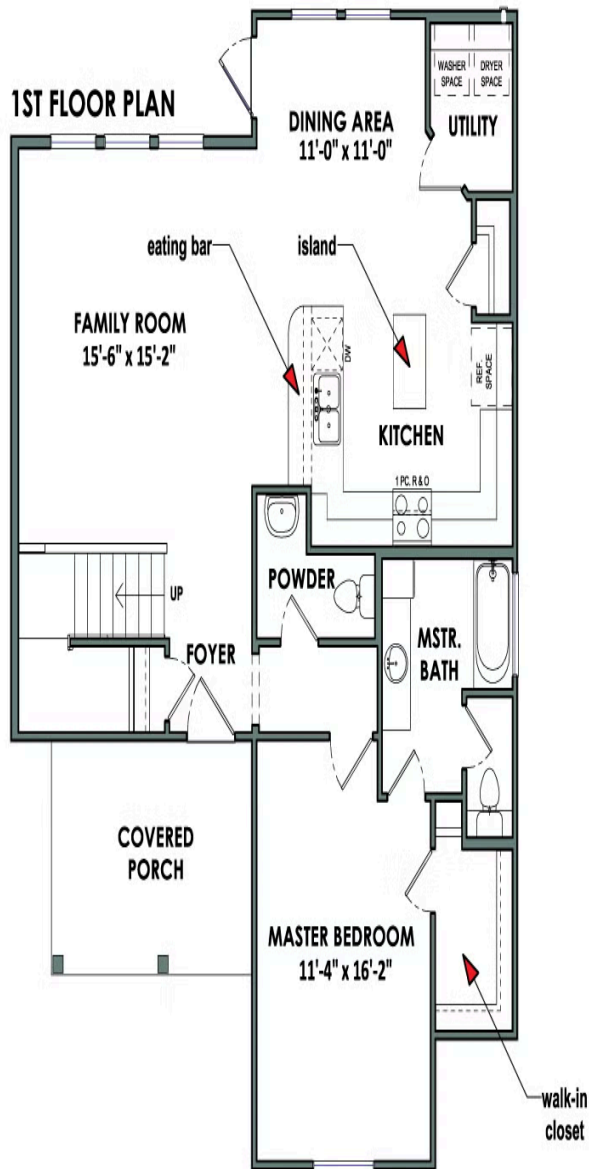
CONTACT US

WWW.TILSONHOMES.COM



*Tilson continuously improves home designs and reserves the right to modify home features and specifications without notice or obligation. Square footage is approximate and includes overall dimensions. Renderings are drawn to be substantially correct. Tilson standard features may vary by home design and/or location. Contact a Tilson Sales Associate for details.
Current information as Feb. 20, 2025, 4:18 p.m.*

Floorplan - The Victoria



WWW.TILSONHOMES.COM



Tilson continuously improves home designs and reserves the right to modify home features and specifications without notice or obligation. Square footage is approximate and includes overall dimensions. Renderings are drawn to be substantially correct. Tilson standard features may vary by home design and/or location. Contact a Tilson Sales Associate for details.
Current information as Feb. 20, 2025, 4:18 p.m.