



1,729

Sq.Ft.



3

Bedrooms



2.0

Bathrooms



1.0

Story



0

Garage

Separated living quarters, a quiet study, and a large, open central gathering space make the Tampico perfect for families that value both closeness and privacy. The central area includes a large family room that is open to the kitchen and dining area, and is overlooked by an open counter and eating bar. The kitchen also features a walk-in pantry and island, with the option to relocate the adjacent utility room for a larger pantry. Two split bedrooms and a bathroom sit on the right side of the house, and the spacious master suite with a large walk-in closet is on the left.

WWW.TILSONHOMES.COM



Tilson continuously improves home designs and reserves the right to modify home features and specifications without notice or obligation. Square footage is approximate and includes overall dimensions. Renderings are drawn to be substantially correct. Tilson standard features may vary by home design and/or location. Contact a Tilson Sales Associate for details. Current information as Feb. 13, 2024, 12:45 p.m.



Elevation C - The Tampico |
Model Located in Waco - May
Contain Upgrades



Elevation C - The Tampico



Elevation A - The Tampico



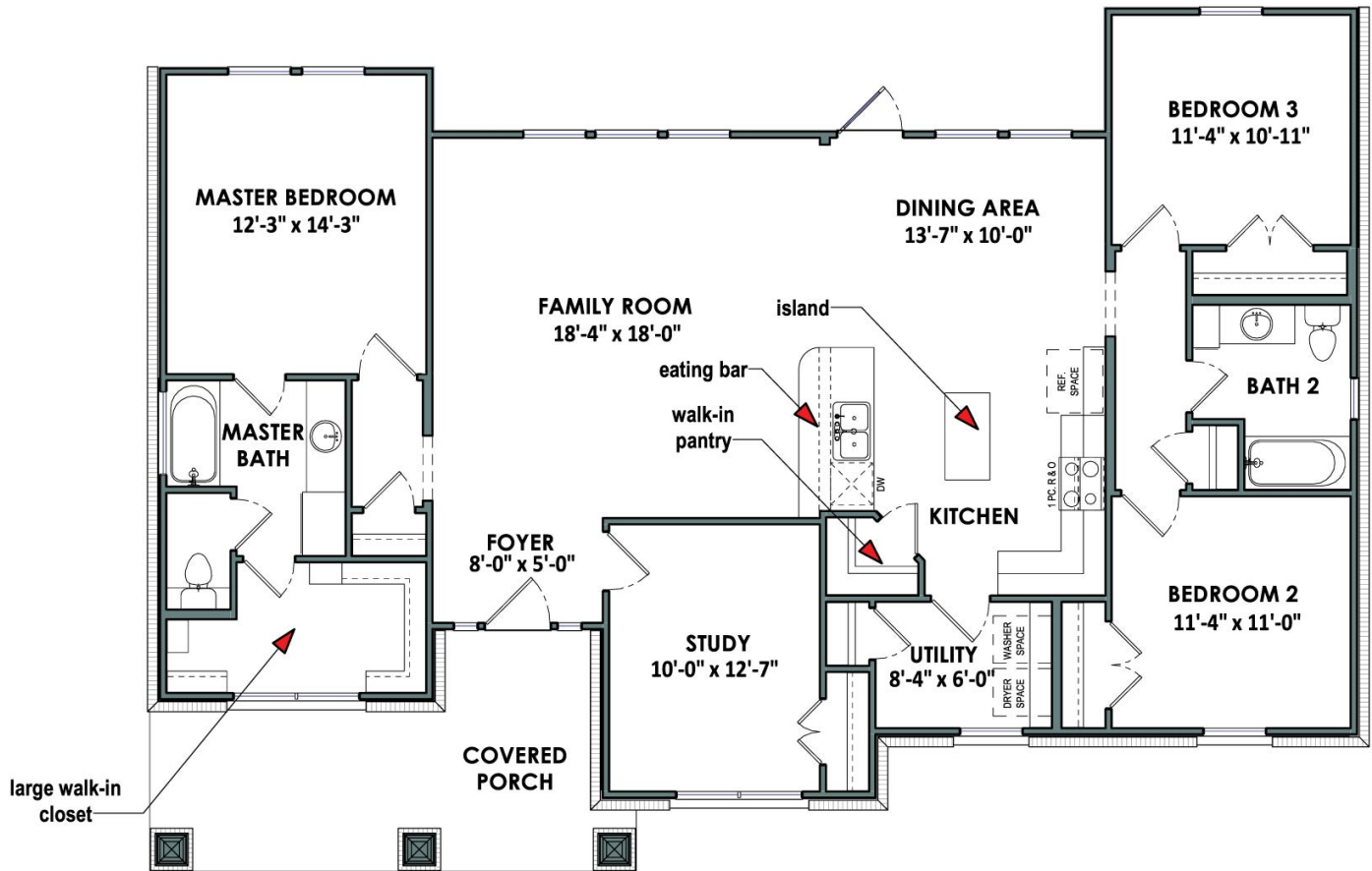
Elevation B - The Tampico

WWW.TILSONHOMES.COM



Tilson continuously improves home designs and reserves the right to modify home features and specifications without notice or obligation. Square footage is approximate and includes overall dimensions. Renderings are drawn to be substantially correct. Tilson standard features may vary by home design and/or location. Contact a Tilson Sales Associate for details. Current information as Feb. 13, 2024, 12:45 p.m.

Floorplan - The Tampico



WWW.TILSONHOMES.COM



Tilson continuously improves home designs and reserves the right to modify home features and specifications without notice or obligation. Square footage is approximate and includes overall dimensions. Renderings are drawn to be substantially correct. Tilson standard features may vary by home design and/or location. Contact a Tilson Sales Associate for details. Current information as Feb. 13, 2024, 12:45 p.m.