



2,495

Sq.Ft.



4

Bedrooms



2.5

Bathrooms



1.0

Story

The San Jacinto is a bright and spacious home, with raised ceilings throughout and wood beams in the family room and dining room for elegant flair. Coming in from a large covered porch, the foyer opens into the dining room and family room, with a sizable kitchen and breakfast nook adjoining the two. An eating bar and open counter space separates the family room and kitchen, and a utility room, powder room, and flex room branch off from the left side. The luxurious master suite on the opposite end includes a corner soaking tub, seated shower, and large walk-in closet. Three bedrooms and a bathroom make up the rest of the living quarters.

WWW.TILSONHOMES.COM



*Tilson continuously improves home designs and reserves the right to modify home features and specifications without notice or obligation. Square footage is approximate and includes overall dimensions. Renderings are drawn to be substantially correct. Tilson standard features may vary by home design and/or location. Contact a Tilson Sales Associate for details.
Current information as June 23, 2025, 5:42 p.m.*



Elevation D | The San Jacinto

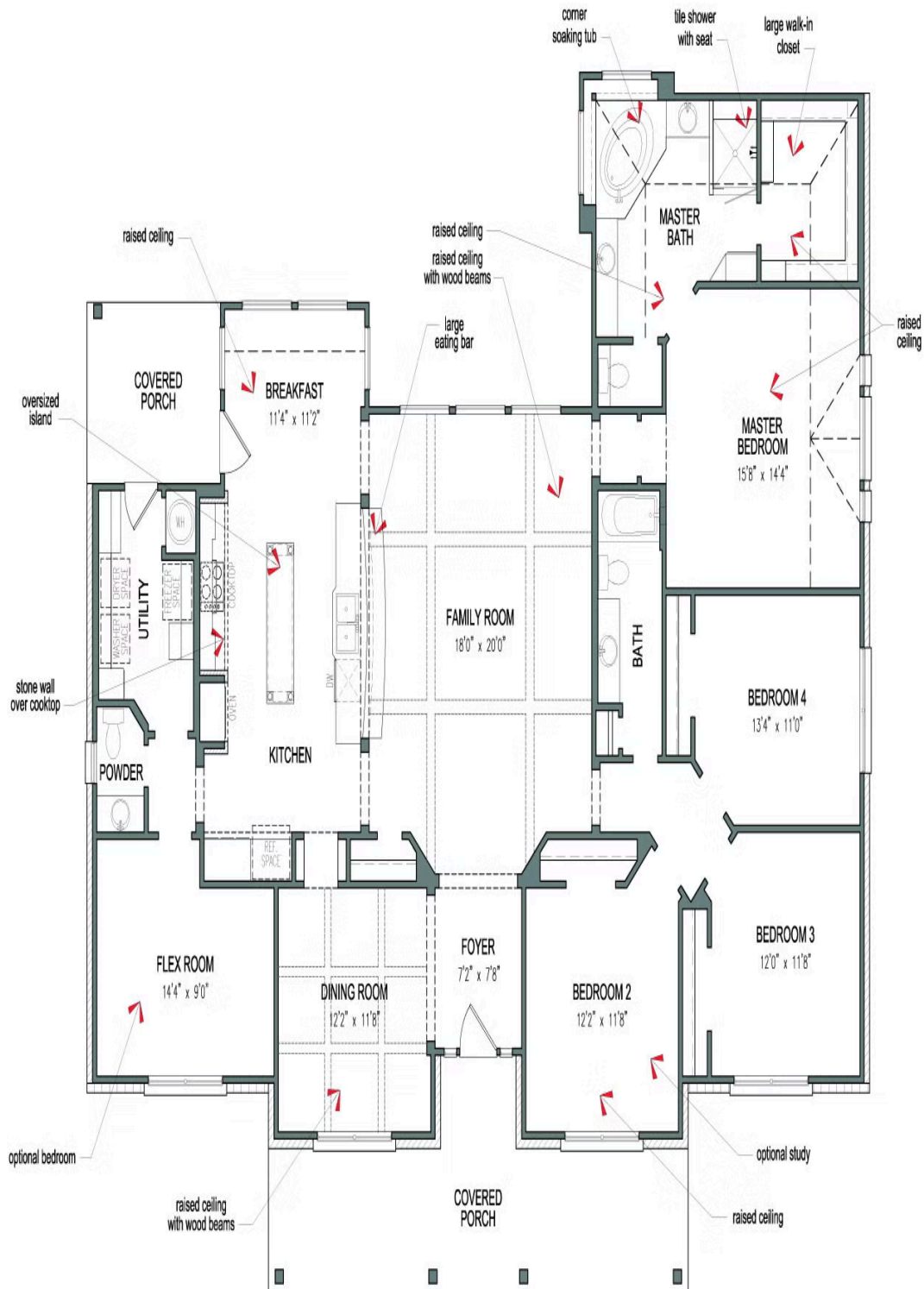
CONTACT US

WWW.TILSONHOMES.COM



*Tilson continuously improves home designs and reserves the right to modify home features and specifications without notice or obligation. Square footage is approximate and includes overall dimensions. Renderings are drawn to be substantially correct. Tilson standard features may vary by home design and/or location. Contact a Tilson Sales Associate for details.
Current information as June 23, 2025, 5:42 p.m.*

Floorplan - The San Jacinto



WWW.TILSONHOMES.COM



Tilson continuously improves home designs and reserves the right to modify home features and specifications without notice or obligation. Square footage is approximate and includes overall dimensions. Renderings are drawn to be substantially correct. Tilson standard features may vary by home design and/or location. Contact a Tilson Sales Associate for details. Current information as June 23, 2025, 5:42 p.m.