



1,224
Sq.Ft.



3
Bedrooms



2.0
Bathrooms



1.0
Story

Welcome to the San Antonio, a home with an open central gathering space and split living quarters.

The front entrance leads directly into the family room, which is overlooked by the kitchen's open counter and eating bar. The kitchen also features a walk-in pantry, and has a utility closet with space for a washer and dryer near the rear exit. A master suite with a large walk-in closet and a variety of customization options occupies one side of the home. Two bedrooms and a full bathroom complete the layout on the opposite side.

WWW.TILSONHOMES.COM



*Tilson continuously improves home designs and reserves the right to modify home features and specifications without notice or obligation. Square footage is approximate and includes overall dimensions. Renderings are drawn to be substantially correct. Tilson standard features may vary by home design and/or location. Contact a Tilson Sales Associate for details.
Current information as Feb. 20, 2025, 11:29 a.m.*



Elevation D - The San Antonio



Elevation A - The San Antonio



Elevation B - The San Antonio



Elevation C - The San Antonio

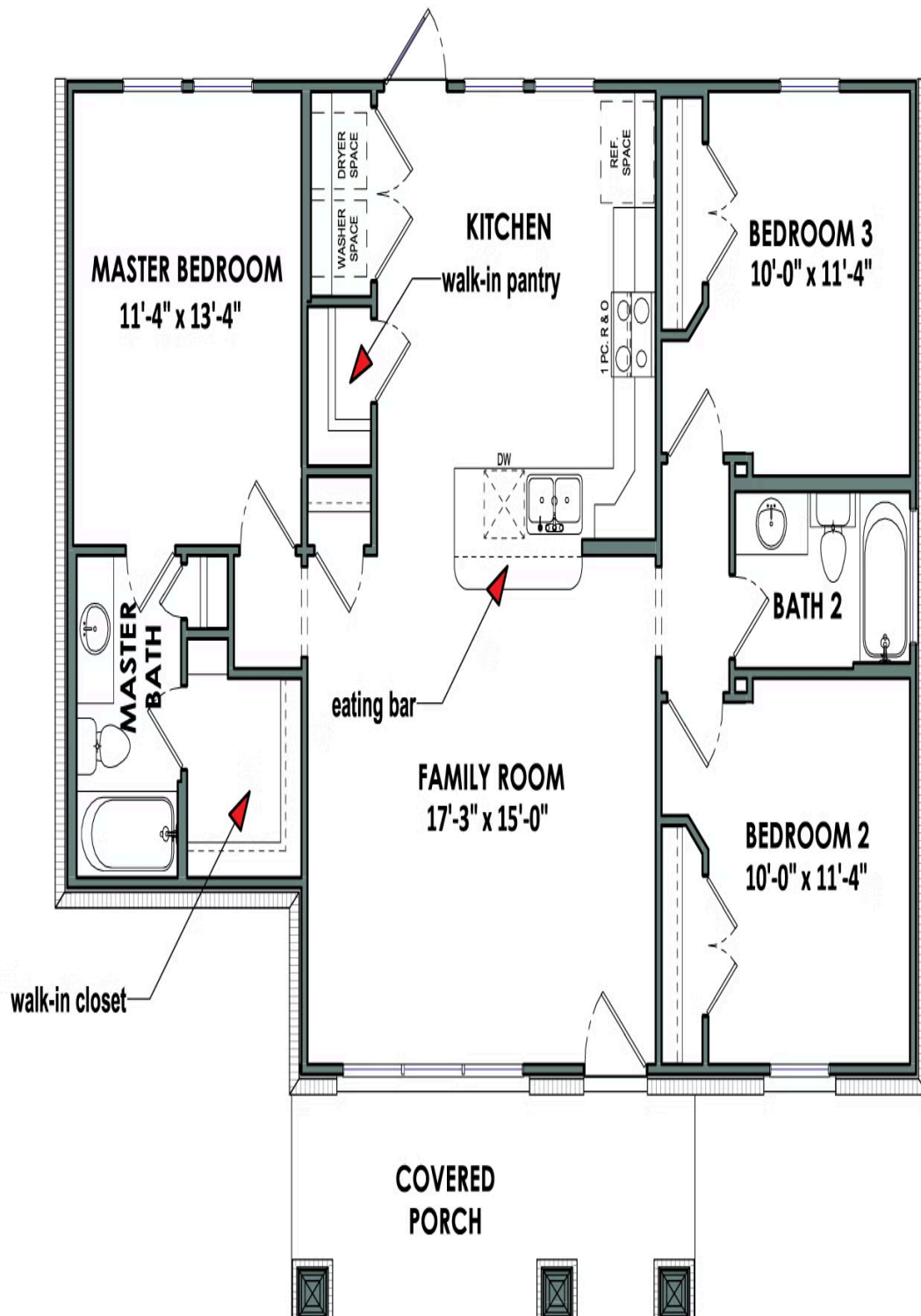
CONTACT US

WWW.TILSONHOMES.COM



*Tilson continuously improves home designs and reserves the right to modify home features and specifications without notice or obligation. Square footage is approximate and includes overall dimensions. Renderings are drawn to be substantially correct. Tilson standard features may vary by home design and/or location. Contact a Tilson Sales Associate for details.
Current information as Feb. 20, 2025, 11:29 a.m.*

Floorplan - The San Antonio



WWW.TILSONHOMES.COM



Tilson continuously improves home designs and reserves the right to modify home features and specifications without notice or obligation. Square footage is approximate and includes overall dimensions. Renderings are drawn to be substantially correct. Tilson standard features may vary by home design and/or location. Contact a Tilson Sales Associate for details.
Current information as Feb. 20, 2025, 11:29 a.m.