

**1,426**

Sq.Ft.

**3**

Bedrooms

**2.0**

Bathrooms

**1.0**

Story

The Rio immediately opens into a spacious gathering area that includes a family room, kitchen, and dining area. The kitchen features an eating bar with open counter space overlooking the family room, a small work island, and a secluded walk-in pantry. The adjacent utility room also has space for a small chest freezer. A hallway extends past the eating bar, leading to a bathroom, two bedrooms, and a master suite with a large walk-in closet. Customize this floor plan with various ceiling options, an attached garage, or an additional bedroom to make it truly yours.

**WWW.TILSONHOMES.COM**

*Tilson continuously improves home designs and reserves the right to modify home features and specifications without notice or obligation. Square footage is approximate and includes overall dimensions. Renderings are drawn to be substantially correct. Tilson standard features may vary by home design and/or location. Contact a Tilson Sales Associate for details.  
Current information as Feb. 20, 2025, 10:37 a.m.*



Elevation A - The Rio



Elevation B - The Rio



Elevation C - The Rio



Elevation D - The Rio

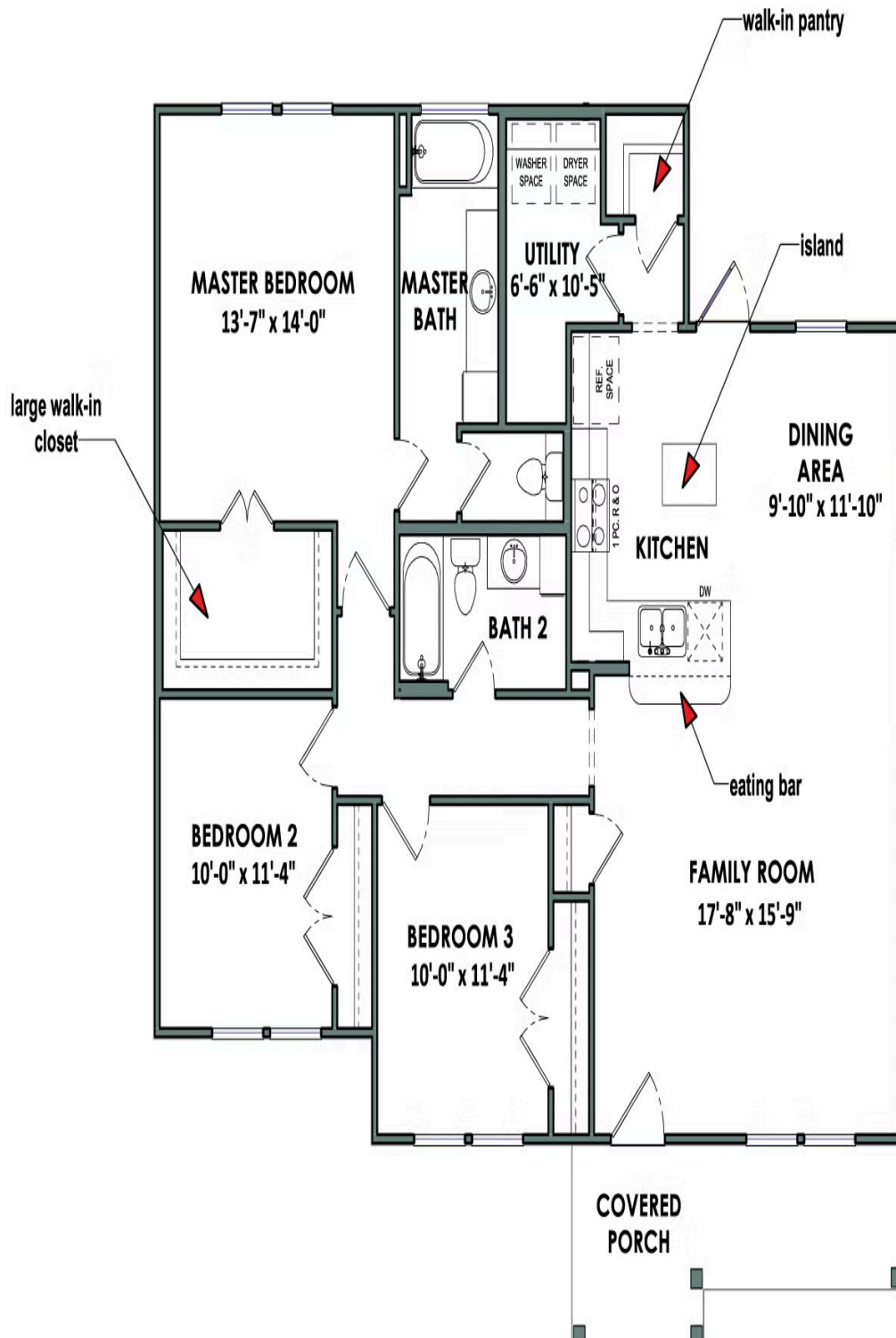
CONTACT US

[WWW.TILSONHOMES.COM](http://WWW.TILSONHOMES.COM)



*Tilson continuously improves home designs and reserves the right to modify home features and specifications without notice or obligation. Square footage is approximate and includes overall dimensions. Renderings are drawn to be substantially correct. Tilson standard features may vary by home design and/or location. Contact a Tilson Sales Associate for details. Current information as Feb. 20, 2025, 10:37 a.m.*

## Floorplan - The Rio


[WWW.TILSONHOMES.COM](http://WWW.TILSONHOMES.COM)


Tilson continuously improves home designs and reserves the right to modify home features and specifications without notice or obligation. Square footage is approximate and includes overall dimensions. Renderings are drawn to be substantially correct. Tilson standard features may vary by home design and/or location. Contact a Tilson Sales Associate for details.  
Current information as Feb. 20, 2025, 10:37 a.m.