



2,005

Sq.Ft.



3

Bedrooms



2.0

Bathrooms



1.0

Story



0

Garage

Light, space, and comfort characterize the Nottingham. The front entrance opens into a foyer that flows into the main gathering space, which includes the dining room, family room, kitchen, and breakfast area. Large windows and a raised ceiling in the family room brighten the space. The kitchen features a sizable eating bar, and the adjacent utility room has space for a secondary freezer. Left of the kitchen, there are two bedrooms separated by a bathroom and closet. On the opposite end of the home is a study and the master suite, which has a large walk-in closet, soaking tub, oversized seated shower, and dual vanities.

WWW.TILSONHOMES.COM



*Tilson continuously improves home designs and reserves the right to modify home features and specifications without notice or obligation. Square footage is approximate and includes overall dimensions. Renderings are drawn to be substantially correct. Tilson standard features may vary by home design and/or location. Contact a Tilson Sales Associate for details.
Current information as April 19, 2023, 6:31 p.m.*



Elevation D - The Nottingham



Elevation C - The Nottingham



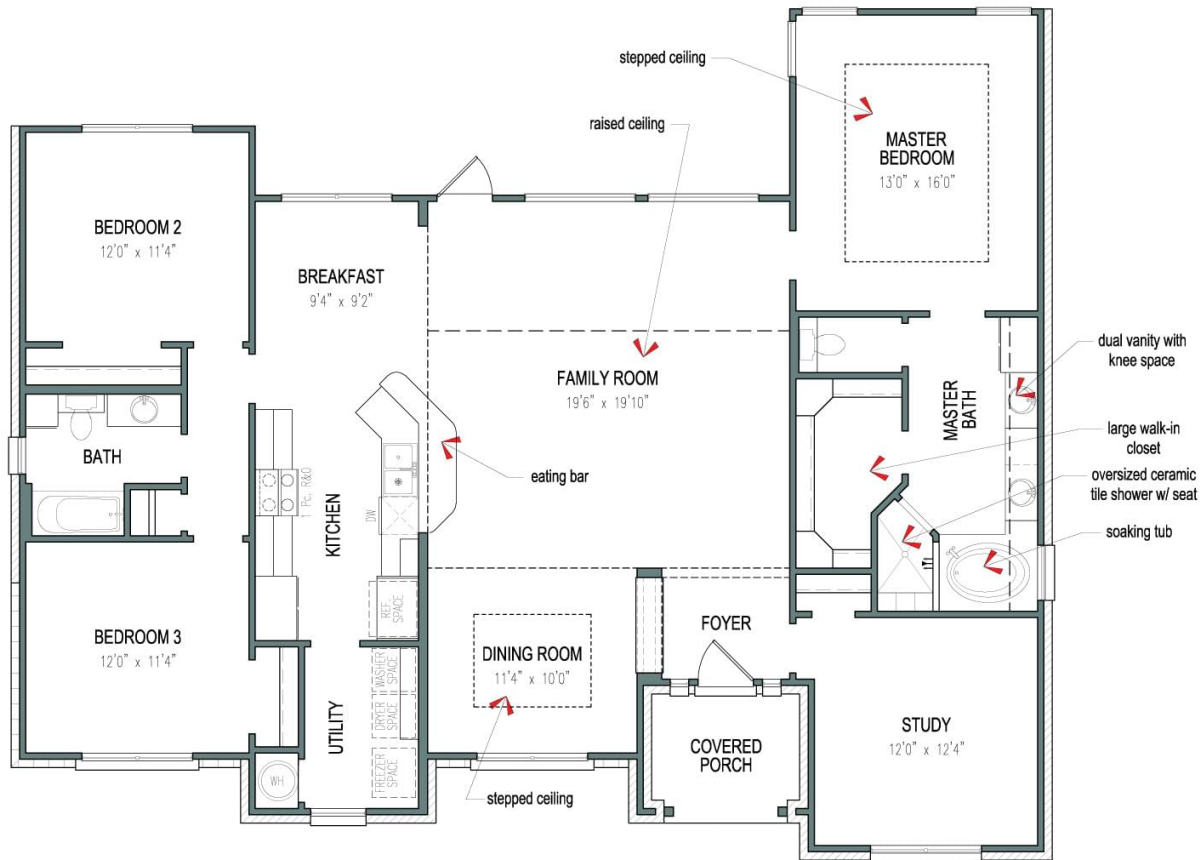
Elevation B - The Nottingham

WWW.TILSONHOMES.COM



Tilson continuously improves home designs and reserves the right to modify home features and specifications without notice or obligation. Square footage is approximate and includes overall dimensions. Renderings are drawn to be substantially correct. Tilson standard features may vary by home design and/or location. Contact a Tilson Sales Associate for details. Current information as April 19, 2023, 6:31 p.m.

Floorplan - The Nottingham



WWW.TILSONHOMES.COM



Tilson continuously improves home designs and reserves the right to modify home features and specifications without notice or obligation. Square footage is approximate and includes overall dimensions. Renderings are drawn to be substantially correct. Tilson standard features may vary by home design and/or location. Contact a Tilson Sales Associate for details. Current information as April 19, 2023, 6:31 p.m.