



**1,578**  
Sq.Ft.



**3**  
Bedrooms



**2.0**  
Bathrooms



**1.0**  
Story



**0**  
Garage

The Nacogdoches is designed to fulfill any family's needs. It features a covered front porch, large family room, dining area, and a kitchen with eating island and corner pantry. In addition, the roomy master suite contains its own bathroom and spacious closet.

[WWW.TILSONHOMES.COM](http://WWW.TILSONHOMES.COM)



*Tilson continuously improves home designs and reserves the right to modify home features and specifications without notice or obligation. Square footage is approximate and includes overall dimensions. Renderings are drawn to be substantially correct. Tilson standard features may vary by home design and/or location. Contact a Tilson Sales Associate for details.  
Current information as March 25, 2020, 10:09 a.m.*



Elevation A - The Nacogdoches



Elevation B - The Nacogdoches



Elevation C - The Nacogdoches



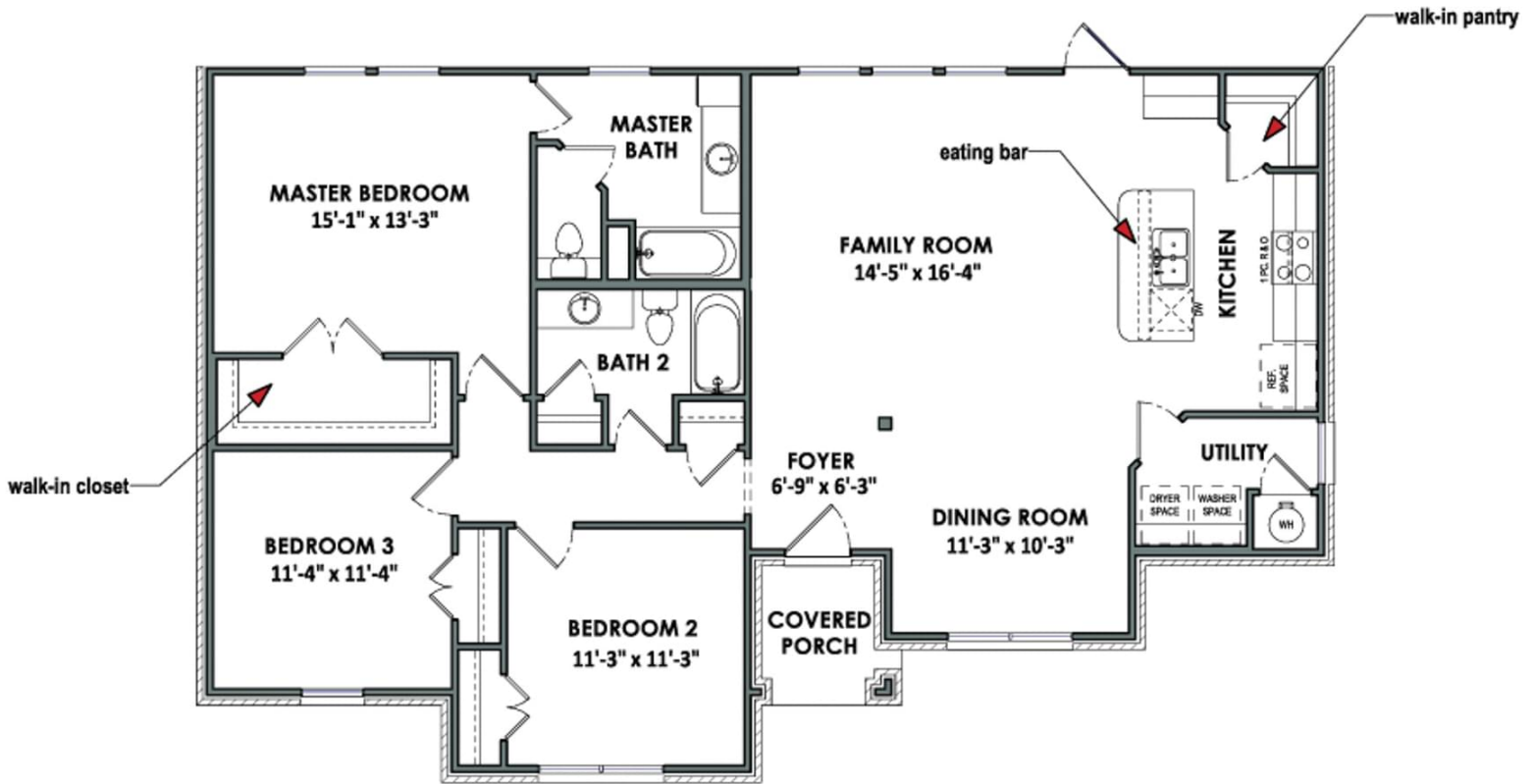
Elevation D - The Nacogdoches

[WWW.TILSONHOMES.COM](http://WWW.TILSONHOMES.COM)



*Tilson continuously improves home designs and reserves the right to modify home features and specifications without notice or obligation. Square footage is approximate and includes overall dimensions. Renderings are drawn to be substantially correct. Tilson standard features may vary by home design and/or location. Contact a Tilson Sales Associate for details. Current information as March 25, 2020, 10:09 a.m.*

## Floorplan - The Nacogdoches



[WWW.TILSONHOMES.COM](http://WWW.TILSONHOMES.COM)



Tilson continuously improves home designs and reserves the right to modify home features and specifications without notice or obligation. Square footage is approximate and includes overall dimensions. Renderings are drawn to be substantially correct. Tilson standard features may vary by home design and/or location. Contact a Tilson Sales Associate for details. Current information as March 25, 2020, 10:09 a.m.