

**2,244**

Sq.Ft.

**3**

Bedrooms

**2.5**

Bathrooms

**1.0**

Story

Light fills the open and airy spaces of the Magnolia. The front entrance opens into a spacious foyer, with a study and closet conveniently located to the left. Straight ahead, the large family room seamlessly connects to the kitchen and dining area, alongside an open flex room that can be used as an entertainment space, lounge, or anything you envision. A hallway extends from the flex room, leading to two bedrooms, a full bathroom, and the utility room. On the opposite side of the layout, the master suite offers two walk-in closets, a powder room, a large seated shower, and a soaking tub.

[WWW.TILSONHOMES.COM](http://WWW.TILSONHOMES.COM)

*Tilson continuously improves home designs and reserves the right to modify home features and specifications without notice or obligation. Square footage is approximate and includes overall dimensions. Renderings are drawn to be substantially correct. Tilson standard features may vary by home design and/or location. Contact a Tilson Sales Associate for details.  
Current information as Feb. 20, 2025, 11:08 a.m.*



Elevation B | The Magnolia

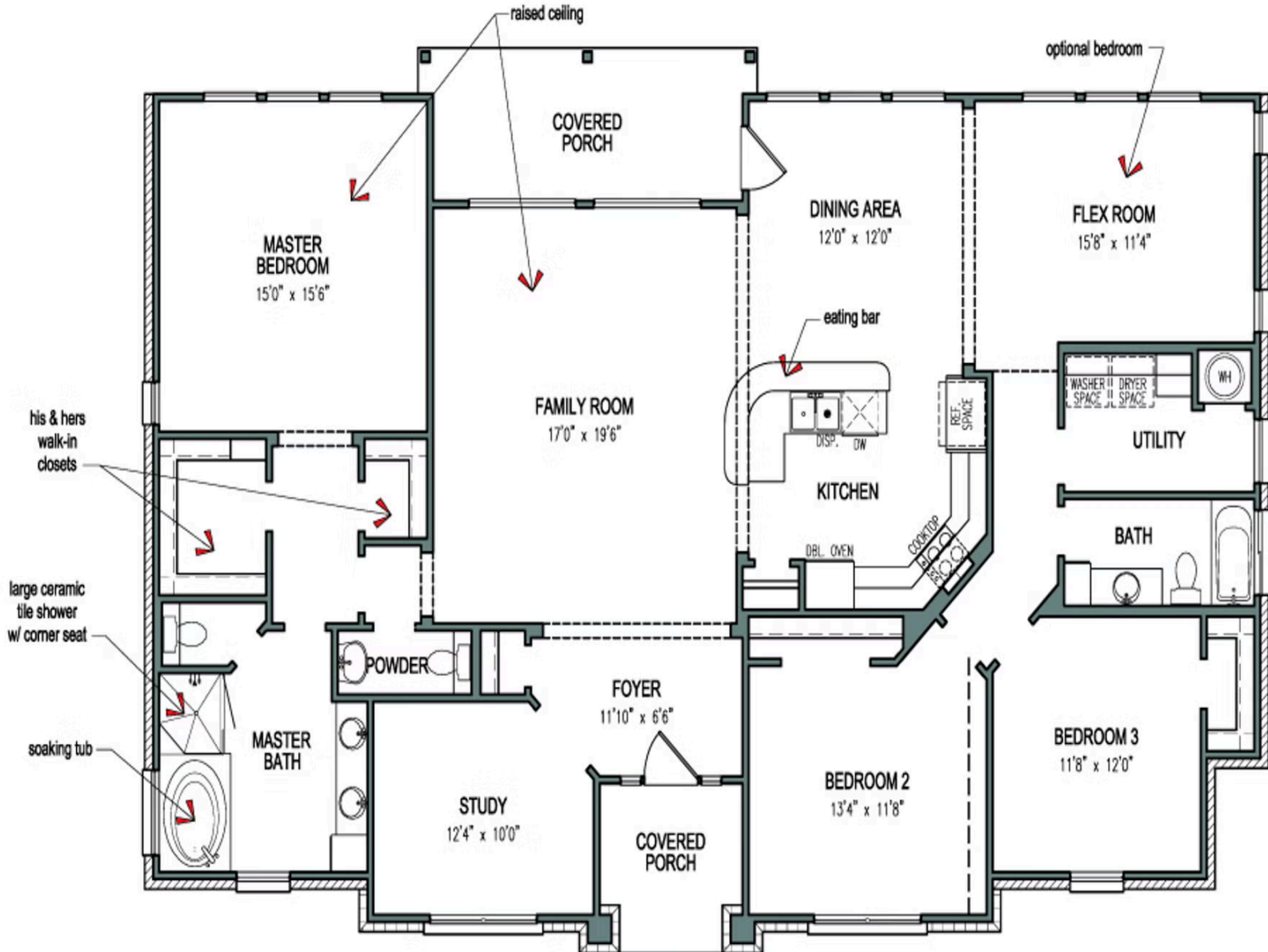
**CONTACT US**

**[WWW.TILSONHOMES.COM](http://WWW.TILSONHOMES.COM)**



*Tilson continuously improves home designs and reserves the right to modify home features and specifications without notice or obligation. Square footage is approximate and includes overall dimensions. Renderings are drawn to be substantially correct. Tilson standard features may vary by home design and/or location. Contact a Tilson Sales Associate for details.  
Current information as Feb. 20, 2025, 11:08 a.m.*

## Floorplan - The Magnolia



[WWW.TILSONHOMES.COM](http://WWW.TILSONHOMES.COM)



Tilson continuously improves home designs and reserves the right to modify home features and specifications without notice or obligation. Square footage is approximate and includes overall dimensions. Renderings are drawn to be substantially correct. Tilson standard features may vary by home design and/or location. Contact a Tilson Sales Associate for details. Current information as Feb. 20, 2025, 11:08 a.m.