



1,834
Sq.Ft.



3
Bedrooms



2.0
Bathrooms



1.0
Story



0
Garage

The Guadalupe's family room features raised ceilings and opens onto the large covered back porch. The kitchen provides extensive cabinetry, a work island, and dining area. The large flex room off of the family room can be used as a study or a formal dining room. The large master suite includes a walk-in closet, custom shower, and soaking tub.

WWW.TILSONHOMES.COM



*Tilson continuously improves home designs and reserves the right to modify home features and specifications without notice or obligation. Square footage is approximate and includes overall dimensions. Renderings are drawn to be substantially correct. Tilson standard features may vary by home design and/or location. Contact a Tilson Sales Associate for details.
Current information as March 26, 2020, 4:40 p.m.*



Elevation D - The Guadalupe



Elevation C - The Guadalupe



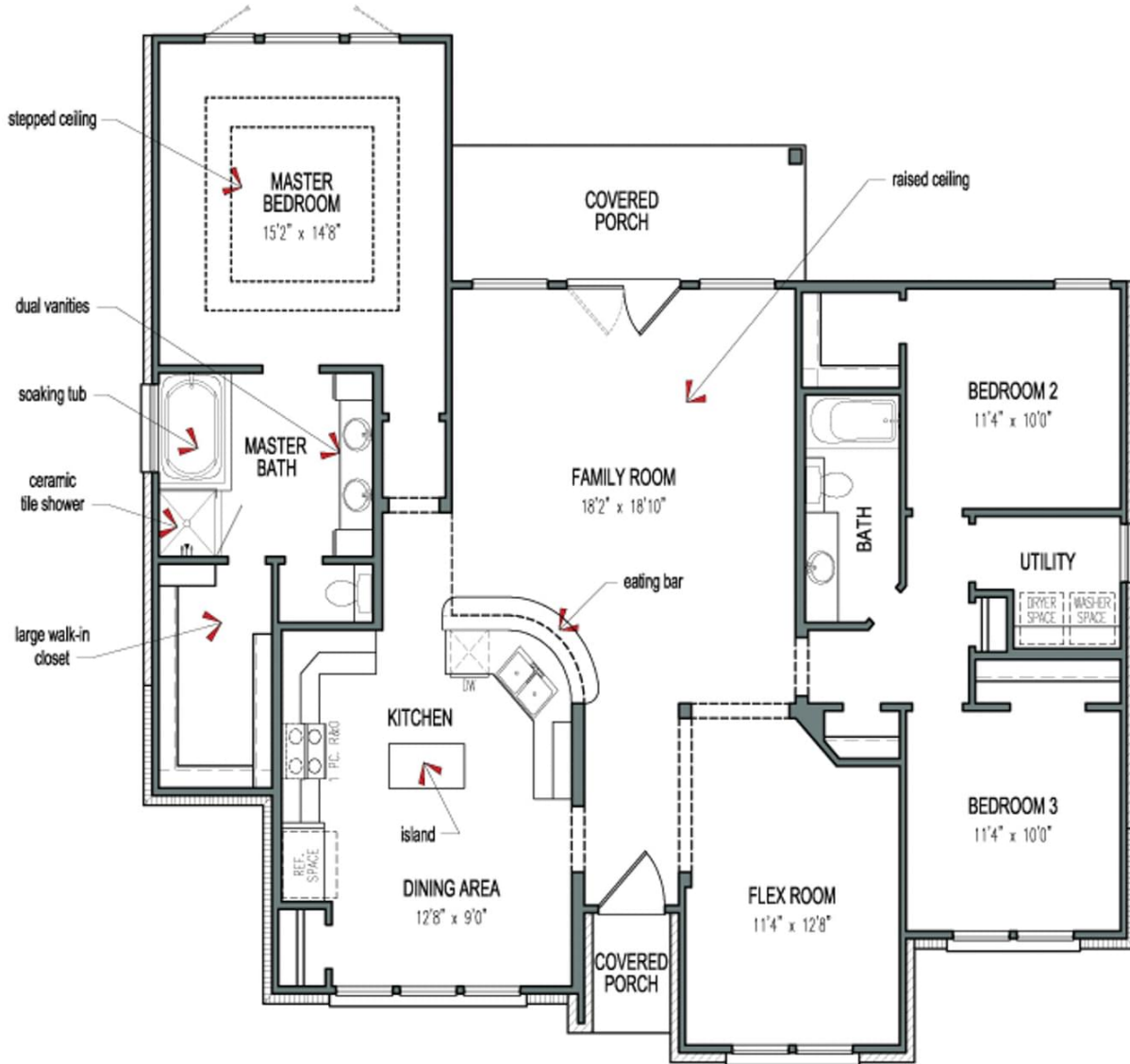
Elevation B - The Guadalupe

WWW.TILSONHOMES.COM



Tilson continuously improves home designs and reserves the right to modify home features and specifications without notice or obligation. Square footage is approximate and includes overall dimensions. Renderings are drawn to be substantially correct. Tilson standard features may vary by home design and/or location. Contact a Tilson Sales Associate for details. Current information as March 26, 2020, 4:40 p.m.

Floorplan - The Guadalupe



WWW.TILSONHOMES.COM



Tilson continuously improves home designs and reserves the right to modify home features and specifications without notice or obligation. Square footage is approximate and includes overall dimensions. Renderings are drawn to be substantially correct. Tilson standard features may vary by home design and/or location. Contact a Tilson Sales Associate for details. Current information as March 26, 2020, 4:40 p.m.